

WEATHER			
Time	Min.	Max.	Prob.
Wednesday, Sept. 12	52	86	0.00
Thursday, Sept. 13	55	90	Trace
Friday, Sept. 14	58	90	Trace
Saturday, Sept. 15	54	78	Trace
Sunday, Sept. 16	58	78	0.25
Monday, Sept. 17	58	78	0.45
Tuesday, Sept. 18	50	70	0.01

# The Chelsea Standard

**QUOTE**  
Restlessness is discontent—  
and discontent is the first ne-  
cessity of progress.  
—Edison

NINETY-SECOND YEAR—No. 12

14 Pages This Week

CHELSEA, MICHIGAN, THURSDAY, SEPTEMBER 20, 1962

10c per Copy

SUBSCRIPTION \$3.00 PER YEAR

## Bulldogs' Hope High Despite Loss in Opener

Conference Play Starts Friday Against U. High

The Chelsea Bulldogs were defeated, 14-7, by Milan in the season-opener last Friday evening, in what turned out to be a close, hand-fought battle with strong defensive play dominating the game. With Milan receiving the opening kick-off the Big Reds moved quickly for two first downs before having to give up the ball on a punt. Chelsea then picked up a first down, but was then forced to kick back to Milan.

The first period ended with neither team being able to put anything on the score board.

Early in the second quarter, Milan picked up a first down on the Chelsea eight-yard line where the Bulldogs defense stiffened and threw the Big Reds back to the 16. A Chelsea penalty then gave Milan another first down on Chelsea's one-yard line. Outstanding defensive play by a much smaller Chelsea team produced a fine goal-line stand where the Bulldogs prevented a Milan score and then took over on downs.

Midway through the second period Milan picked off a Chelsea pass and ran it to the one-yard line where they went over three plays later for the game's first score. The point after attempt failed.

Moments later Milan picked up two more points on a safety when the Chelsea punter was caught in the end zone trying to run the ball out after a bad pass from center.

The first half ended without any additional scoring and the teams went into the intermission with Milan in front, 8-0.

On the first play from scrimmage following the second half kick-off, Jack Howard, with the aid of an excellent fake by Curt Farley and Dick Laubon, plus fine blocking by Dud Holmes, Don Brooks, Tim Whitesall and Don Wilson, went off right tackle, cut to the outside and went 80 yards for the first Chelsea touchdown of the season.

Jack Howard then kicked the extra point and the Bulldogs were right back in the game.

Midway in the fourth period Milan recovered a Chelsea fumble on the Chelsea 25-yard line. Two plays later, Milan scored from 20 yards out on a power play and went in front, 14-7. The attempt for the point after was not good.

The Bulldogs took the kick and began to move the ball well, picking up four first downs, all the way to the Milan 20-yard line where they were forced to give up the ball on downs.

(Continued on page three)

## Community Chest Drive Starts Oct. 15

The Chelsea Community Chest united fund drive dates this year are Oct. 15-Nov. 5.

Co-chairmen are Larry Chapman and Thomas McClellan.

They announced this week that they have named team captains for the various divisions and for the residential and rural sections.

Team captains for the business category are George Palmer and Rolland Spaulding; in charge of solicitation of industry are Donald Baldwin and William Marsh; and in charge of the school division is Charles Cameron.

Team captains in the four areas of the village are Mrs. J. Wilbert Smith, northwest section; Mrs. P. G. Schaible, Jr. and Mrs. Thomas McClellan, northeast section; Mrs. Richard Kern, southwest section; and Mrs. George Heydlauf, southeast section.

Rural area team captains for the four sections are Mrs. Mary Clark, northwest; Mrs. Warren Eisenbeiser and Mrs. Warren Porath, northeast; Mrs. Jay Weinberg, southwest; and Mrs. George Friesinger and Mrs. Edwin Halst, southeast.

## Kiwanis Club To Entertain Teachers

Twenty Chelsea Kiwanians met Monday evening at Cassidy Lake Technical school for a regular weekly dinner meeting; a number were at the Kiwanis state convention in Detroit.

A guest at the Cassidy Lake meeting was David Colquhoun.

The after-dinner program was opened by Kenneth Shea, director of the school, who gave a talk on the operation of the school and then answered questions of Kiwanians.

Some of the boys at the school also responded by answering questions and then a group of eight youths offered a musical program which Kiwanians reported they enjoyed. Two of the boys played drums and guitar accompaniment for the group who sang several numbers.

The Sept. 24 meeting will take place at 6:15 p.m. in the social center of the Methodist church. It will be a ladies' night and new teachers and their wives and husbands will be guests of the club.



**WIND DAMAGE** — Big limbs and neighboring trees supported this tree, downed by Thursday's twister which struck here with force shortly after 4:15 p.m. This one fell on the east side of East St. damaging aluminum siding and other parts of the home of Mr. and Mrs. John Ford and downing the electric cable at the home of Mrs. Bertha Allhouse next door. The huge tree tore up the sidewalk in front of the two homes as its roots were torn out by the force of the fall.



**AUTO SMASHED IN STORM** — This was the way Dave Atkinson's 1957 Plymouth looked after village crews and volunteer workers had sawed up and removed the big tree that fell on it during Thursday's storm. Mrs. Atkinson, who is employed at Rockwell-Standard Corp., had parked the car on the west side of East St. between Jack-

## Betty Pierce Earns AB Degree at MSU

Bett L. Pierce, daughter of Mr. and Mrs. Paul Pierce, 766 South Main St., received a bachelor of arts degree in elementary education at the close of the summer session at Michigan State University and has accepted a position as a second-grade teacher at Farmington.

## THE SHOW MUST GO ON!

## Bands Carrying on Despite Delay in Uniform Arrival

The Chelsea Band has sparkled in recent public appearances despite the absence of the new set of uniforms ordered last June 28 by the Band Boosters club.

Eighty-one members strong this year, and backed up by another 80 in the Junior High Bands, the Senior High School Band has already given five public performances and three radio broadcasts from tapes of these performances in the young school year.

Public appreciation of the efforts of the bandmen has been evident in all the appearances of the band and particularly at the attractive half-time entertainment of the Milan football game and the away from home applause given the group at the Saline Fair Parade. This public response has been greatly appreciated by the band members and does a lot to lift the group morale which was dealt a crushing blow by the uniform company's failure to deliver the new uniforms as scheduled on Sept. 1.

Many phone calls and communications to the uniform company have led local Band Boosters to hope that delivery may be forthcoming before the end of the present football season.

In the meantime, the Bulldog Band has been appearing in substitute uniforms because there are not enough of the uniforms used in recent years to equip the entire group.

Funds for the purchase of the new uniforms were acquired by the Band Booster club from public support of the projects they sponsor, such as the Community Birthday Calendar, candy bar and fruit cake sales, Detroit Lions stars in a basketball game, and others.

However, more than two-thirds of the purchase price of the uniforms was financed by the gracious action of a local businessman, in loaning the group necessary money at no interest and to be repaid over a period of four years. Continued public support of the Band Booster club projects is earnestly solicited so that his indebtedness may be repaid as scheduled.

Wayne means committee chairman, Charles Lancaster, and his committee members are hard at work on an agenda of projects to take the group over the top in its commitment for the present year. Each uniform costs approximately \$75.

The Board of Education has aided the instrumental department by supplying some of the larger instruments and the Band Boosters club, whose membership is comprised of all parents of Band students from grades 5 through 12, has taken on the monumental task of supplying the Bands with appropriate uniforms.

Meanwhile—the Band Plays On!

## Hunter Safety Course Set For Youth

Hunter Safety instruction classes, sponsored by the Michigan Department of Conservation with area groups co-operating, will begin in Chelsea Sept. 27 and in Dexter Oct. 2, it was announced this week by Conservation Officer Donley Boyer.

Instructor for the Chelsea class, to be held in the third floor of the Municipal Building, will be Peter Severn whose telephone number is GR 9-4073, while in Dexter, J. Yates Kennedy will be the instructor. His office telephone number is HA 6-3531 and his home telephone is HA 8-8125.

Registration at both Dexter and Chelsea classes will take place at the first session.

The four-hour course will be given in three sessions at Dexter where the American Legion Post 557 is co-operating with the project. Dates are Oct. 2, 3 and 4. The classes will be held at the high school.

Dates for only the first two (Continued on page six)

## Wind Storm Inflicts Widespread Damage Thursday Afternoon

### Pastor Resigns Post To Continue Graduate Study

The Rev. Philip Rusten announced during the morning service Sunday at the Congregational church that he is resigning as pastor, effective Jan. 31, 1963, in order to continue graduate studies in preparation for guidance and counseling work.

The Rev. Rusten has been pastor of the Chelsea church the past five years.

### Trees Uprooted, Cars Demolished, Roofs Gone, Volunteers Aid Clean Up

A storm which roared into Chelsea from the northwest about 4:15 o'clock Thursday afternoon struck most severely on East St. where nearly all of the fine old trees were either pulled out by the roots or broken off leaving only the trunk standing.

The word "roared" is used advisedly; residents in the affected area stated that the wind made a roaring noise like that of a large number of airplanes passing overhead.

The roof of the Sylvan Hotel on North Main St. was blown off and the roofing on the garage of Harpers Sales & Service on West Middle St. was left with air pockets raised over the entire area. While none of the roofing actually blew off, the roof has to be replaced.

Kellie Allen, superintendent of the Public Works Department, said 20 trees were downed by the storm, most of them on East St. just south of the railroad. One tree, as it fell, tore up a portion of East St. sidewalk.

In the block between the railroad tracks and East Middle St., one of the huge trees crashed down on a parked car, demolishing the vehicle owned by Dave Atkinson. The car had been parked on the west side of East St. by Mrs. Atkinson when she returned to work at Rockwell-Standard Corp. following her lunch hour.

The storm struck only a short time before she finished work for the day—a few minutes later and she might have been going to her car on her way home.

Mrs. Ray Knickerbocker, returning home with her three children, Terry, 4, Tim, 2 and Bradley, less than a year old, were trapped in their car on East St. by branches of a downed tree until help arrived. None of the car's occupants was hurt and the car suffered no serious damage.

Falling trees and limbs downed power lines and the area was without electricity for varying periods.

Homer Nixon, superintendent of the Light and Water Department, said between 25 and 30 lines were downed during the storm. Service in all but one area of East St. was restored within three hours.

The one East St. area was without power until 7 a.m. Friday because of a broken cable between Jackson and East Middle streets.

Approximately 80 telephones were put out of commission in the Chelsea area.

On Park St. near East St. the center tree of a group of three was left with only the trunk standing after the entire top was torn off.

Other trees were downed on South St., East Middle St., West

Middle St., East Summit St., and Washington St.

Entrance to the village from the east was blocked.

Volunteers from neighboring communities and area farmers rushed to assist Chelsea Public Works crews, Auxiliary Police and firemen in sawing up the fallen trees and getting the debris out of the roadways.

The village payloader was brought in from the landfill and was a big help in moving the heavy tree trunks. Volunteers brought chain saws to speed sawing the big tree trunks and farmers and business concerns of the community brought trucks to the area to help with the work.

Allen said, with the exception of East St. between East Middle and Jackson, all streets were open for traffic by 10 p.m.

Chelsea police officers were all on duty and with the assistance of Auxiliary Police, directed traffic around the danger areas.

Village President Robert Daniels and Village Council members, on behalf of village residents, expressed appreciation for the work of volunteers in the community and especially those from neighboring communities who rushed here to help as soon as word of the disaster reached them by means of news broadcasts.

The news broadcasts were carried throughout the nation and soon calls were being received here from people at some distance inquiring as to the safety of relatives here. One call from the western part of the country mentioned that the news broadcaster said Chelsea had been "wiped off the map."

Outlying rural areas had small buildings blown down, trees uprooted and broken and in all parts of the village there were limbs blown down however, no one was reported to have been injured.

The all-out effort of residents, village personnel, Auxiliary Police and volunteers was described by one person as similar to Chelsea's "125th Anniversary spirit," when everyone in the community turned out whenever help was needed to put over a project.

People who came to help and those who brought power saws and trucks pitched right in and worked no one particularly identified himself and for this reason it is impossible to give anyone personal recognition except to express a heartfelt thank you to every person who helped here.

The storm was general throughout the state and other parts of the country; however, Chelsea appeared to have been hardest hit of any community in this area.

(Continued on page six)

## Council Briefs

The Rev. Harold Bilotta, pastor of the Chelsea Assembly of God church, gave the invocation at the Sept. 18 Village Council meeting.

Request received from the Dana Corp., (Chelsea Products), for rezoning of a parcel of land recently purchased by the firm from agricultural to industrial. The land is located to the west of Letts-Creek.

Discussion regarding the boundaries of Pierce Park; the clerk was instructed to contact the village engineer for a final survey.

Motion was approved to advertise for bids for a new two-ton cabin chassis for the Public Works Department.

The Flanders St. area storm water problem was the subject of discussion; also the storm sewer in the Meadow Lane area.

Discussion regarding the fill on Freer Rd. for construction of a gravel walkway for children. Kellie Allen, superintendent of the Public Works Department, informed the Council he is proceeding with the construction of the walkway.

DPW Superintendent Allen and Police Chief John Palmer were authorized to construct a portable school safety zone marker light to be used at the corner of Dewey and North Main St.

Motion was made to transfer the balance of \$2,274.29 remaining in the Water Improvement Bond Issue Fund to the bond and interest account, to finalize the closing of the former account.

Authorization was given the Light and Water Department to purchase an alternator for use on a department truck; also, to purchase a new radio for use in (Continued on page three)



**GOVERNOR CAMPAIGNS** — Gov. John B. Swainson, second from right, spent Friday campaigning in Washtenaw county, as shown in the above photo on a visit Friday morning to Central Fibre Products plant here as the guest of Donald Bacon (right) president of the firm. With the governor in the photo, from left, are Mrs. Thomas Kane, wife of the candidate for Congress for the Second District; and Attorney General Frank Kelley, Central Fibre employee, standing behind

Mrs. Payne are Earle Reaner, Al Johnson and Homer Conley. Governor Swainson spoke to the plant employees and officials assembled to greet him. Others present included Dennis Tallant, Sylvan township Democratic chairman, and a number of the community invited to meet the governor and his party. Governor Swainson concluded his Washtenaw county visit at Ypsilanti where he spoke at the UAW Local 849 Hall.



**WOULD-BE GOVERNOR CAMPAIGNS** — George Romney, Republican candidate for governor spent Saturday in Washtenaw county and was a speaker at the Washtenaw County Republican Committee's annual ox roast which took place at the Delhi picnic grounds of the Metropolitan Authority recreation area. Romney was surrounded as soon as he concluded. Romney, on his swing around the county, visited the Farmers' Market in Ypsilanti and Ann Arbor, made other appearances in Ypsilanti and Ann Arbor, and concluded the day with a visit to the Saline Fair where he spoke at 8 p.m.



**The Chelsea Standard** Telephone GR 5-3581  
 General Excellence Award by Michigan Press Association  
 1961-1963-1966-1969-1970  
 Walter P. Leonard—Editor and Publisher

Published every Thursday morning at 300 North Main Street, Chelsea, Mich., and second class postage paid at Chelsea, Mich., under the Act of March 3, 1879.

Subscription Rates (Payable in Advance):  
 In Michigan: One Year \$8.00 Six Months \$4.00  
 Outside Michigan: One Year \$10.00 Six Months \$5.00  
 Single Copies \$ .10 Single Copies \$ .20  
 Service men or women, anywhere, 1 year \$3.00

Second Advertising Representative  
 CHELSEA • CHELSEA • CHELSEA • CHELSEA • CHELSEA

## Scientists Report Nearly Perfected Process for Artificially Produced Milk

In England there are scientists who are about to do away with the cow as a producer of milk. Can it really be true? Hard as it is to believe, they say they have discovered a way to make milk by mashing pea pods, the outer leaves of cabbage and other relatively unwanted greenstuffs, and adding water. The water is then heated and this precipitates proteins—so they say.

To this mixture is added vitamins, minerals, vegetable fats and carbohydrates. The result is milk. But it couldn't sound less appetizing.

And yet, perhaps, the ingredients are equal to the grass that cows eat, incredible as it all sounds.

There is still one minor problem. The scientists admit the milk has a vegetable taste. But they expect to conquer that problem and think their product will go on the market, either in powder or liquid form, shortly thereafter.

The one remaining problem, perhaps, is to make some manure to go with the milk—the manure being so important to dairy farmers. But the scientists are now making only milk—not milk and manure. There the cow, it seems, still has them licked.

Even with this dramatic scientific breakthrough and the great benefits it may prove to humanity, there is something too scientific about artificially-produced milk. It's like the thought of taking a pill rather than eating a fine dinner.

When we come to that, the world will have lost something. In fact, there is little enticing about the thought of having a few scientific pills for dinner on the cold surface of the moon, or of having artificial milk. But we may be in for both, as the age of science moves upon us.

## W. Porath Named To Head Washtenaw Student Council

Four of the seven schools in the Washtenaw Conference were represented at the first meeting of the 1962-63 school year for the Washtenaw Conference Student Council. The meeting was held at Chelsea High School Tuesday afternoon.

Schools in the conference are University High, Roosevelt, Pinkney, Manchester, Dexter, Saline and Chelsea High schools.

At the election of officers for the year, first order of business on the agenda, two Chelsea students were elected—Warren Porath as president and Carol Mayer as secretary.

The vice-president elected is Bruce Mitchell of Dexter and the treasurer is Ruth Howell of University High school.

Porath also is president of the Chelsea High School Student Council and Carol Mayer is vice-president.

Following his election as Conference president, Porath presided at Tuesday's meeting. There were four representatives present from each of the following schools—University High, Dexter, Manchester and Chelsea.

A discussion of the exchange of year books among schools of the conference resulted in a decision to continue the practice.

It was also decided that re-activation of an MEA Region III Conference be promoted by the Washtenaw Conference and James Griffin of University High school, elected last spring as president of the Region Conference, will call a meeting to be held either on Oct. 19 or 19 at Ann Arbor.

Another matter taken up at Tuesday's meeting was that of a Conference Student Council sportsmanship trophy to be presented at the end of the basketball season to the school receiving the highest number of ballots cast by judges throughout the football and basketball season.

Each school will have one ballot to cast for each school football and basketball game.

Judging of opposing teams will be based on five points—community support; cheerleaders; school spirit; coaches; and players' conduct.

Results will be tabulated at the end of the season and the trophy awarded the school polling the highest number of points.

Also brought up for discussion was the subject of an exchange day and a conference day for participating schools. It was decided that the representatives present discuss the matter in their own school Student Council meetings and report on opinions expressed by the local groups at the next Conference Student Council meeting scheduled for Oct. 24 at Dexter.

Following his election as Conference president, Porath presided at Tuesday's meeting. There were four representatives present from each of the following schools—University High, Dexter, Manchester and Chelsea.

A discussion of the exchange of year books among schools of the conference resulted in a decision to continue the practice.

It was also decided that re-activation of an MEA Region III Conference be promoted by the Washtenaw Conference and James Griffin of University High school, elected last spring as president of the Region Conference, will call a meeting to be held either on Oct. 19 or 19 at Ann Arbor.

Another matter taken up at Tuesday's meeting was that of a Conference Student Council sportsmanship trophy to be presented at the end of the basketball season to the school receiving the highest number of ballots cast by judges throughout the football and basketball season.

Each school will have one ballot to cast for each school football and basketball game.

Judging of opposing teams will be based on five points—community support; cheerleaders; school spirit; coaches; and players' conduct.

Results will be tabulated at the end of the season and the trophy awarded the school polling the highest number of points.

Also brought up for discussion was the subject of an exchange day and a conference day for participating schools. It was decided that the representatives present discuss the matter in their own school Student Council meetings and report on opinions expressed by the local groups at the next Conference Student Council meeting scheduled for Oct. 24 at Dexter.

Following his election as Conference president, Porath presided at Tuesday's meeting. There were four representatives present from each of the following schools—University High, Dexter, Manchester and Chelsea.

A discussion of the exchange of year books among schools of the conference resulted in a decision to continue the practice.

It was also decided that re-activation of an MEA Region III Conference be promoted by the Washtenaw Conference and James Griffin of University High school, elected last spring as president of the Region Conference, will call a meeting to be held either on Oct. 19 or 19 at Ann Arbor.

## MIRACULOUS MICROWAVES

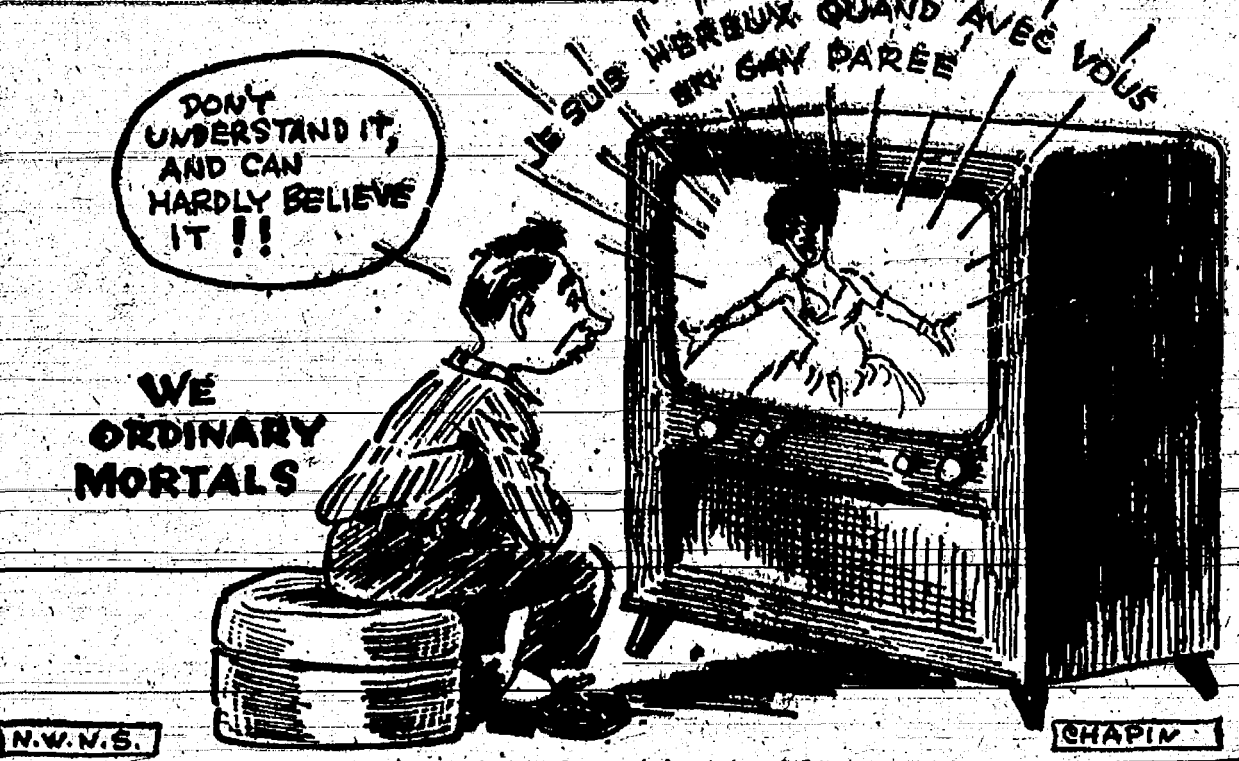
1901: WIRELESS TELEGRAPH FIRST CAME INTO GENERAL USE

MID 20'S RADIO BEGAN BROADCASTING CRYSTAL RECEIVING SETS FIRST USED

1931: TELEVISION BEGAN BROADCASTING WITH ONLY 20 MILE RANGE

1951: FIRST TELEVISION BROADCAST ACROSS THE CONTINENT

1962: FIRST "TELESTAR" SATELLITE 22,000 MILES IN OUTER SPACE, RELAYED TELEVISION PROGRAMS FROM U.S. TO EUROPE, AND FROM EUROPE TO U.S.



## MICHIGAN MIRROR

By Elmer E. White, Secretary, Michigan Press Association

The Completion of the Michigan legislature in 1963 is very likely to present a sharp contrast to that of recent years.

Nine members of the State Senate definitely will not return. Seven seats were vacated by the incumbents voluntarily and two prominent Republican members, Kalamazoo Sen. Carlton H. Morris and Sen. Charles R. Feenstra of Grand Rapids, were ousted in primary contests.

In the House, upsets in primary election races and voluntary "retirements" put 21 seats up for grabs by new hopefuls.

Known changes would give a minimum 30 new members in the two houses.

In addition, however, there are still a few districts in the state where neither party has a tight hold on official positions, and further upsets of incumbents could result.

In Oakland and Macomb counties, for example, population shifts and various other factors have changed the election returns in recent years. Part of Muskegon county also is considered in the "swing district" category.

The two major parties are watching the House races particularly in the current campaign. The few strategic "swing districts" could mean the difference between control of the chamber, which had a 55-55 split when the 1958 votes were counted and Republicans held a bare 56-54 majority during the last session.

Michigan's third international bridge is expected to give the state a new tourist attraction as well as a transportation link.

The International Bridge at Sault Ste. Marie in the eastern end of the Upper Peninsula is scheduled to be opened late this

fall. Estimated cost of the span over the Soo Locks and St. Mary's River is \$20 million.

State Highway Department officials said ferries carrying traffic between the two cities named Sault Ste. Marie were taxed beyond capacity during the past several months.

Dedication of the bridge will mark the end of the ferry service across the river. The ferry service just east of the giant locks was established in 1888.

The new gateway linking Michigan with Canada is expected to draw tourists from the north as well as those seeking to travel in the Canadian provinces, State Tourist Council officials said.

Michigan's other international bridges, the Ambassador Bridge at Detroit and the Blue Water Bridge at Port Huron, also are highly regarded for their tourist-attracting power.

Boaters in Michigan next summer may find a host of new rules and regulations governing their activities, depending on the success of a new committee established by the legislature.

The Boating Control Committee was created to promote water safety through more uniform boating regulations.

Headed by a member of the Secretary of State's office, Harold E. Bradshaw, the committee is authorized to recommend whatever controls seem necessary to protect public safety on local waters.

The committee is empowered to set boat speed limits and zones, regulate the size and horsepower of boat motors, and establish hour restrictions on motorboats.

It may also direct the marking of special areas to reserve them for navigation, boating, swim-

ming, fishing or other single purpose activities.

Bradshaw emphasized the law provides that all recommendations of the committee are subject to acceptance by local units of government. Enforcement of the regulations will be done by local authorities.

Future planning in aviation service for Michigan will be particularly based on a recent survey conducted throughout the state under the direction of the Department of Aeronautics.

"Aviation Fact Finder" involved thousands of flights and plane passengers in Michigan in late July.

The airlines kept track of passenger origin and destination and asked each passenger to fill out an economic information post card. Volunteer interviewers questioned the pilots of general aviation aircraft before take-off and after landing.

James D. Ramsey, state aeronautics director, said the results of the survey will not be known until the end of the year.

The results will be used to provide the statistical basis to enable sound planning here to allow our state to take advantage of the transportation and economic value of aviation in the years to come, he said.

One typical day during the survey, drawn out of the file as a sample, showed 512 interviewers recorded almost 4,000 general aviation aircraft operations. Passenger information cards were not fully returned for the sample day, said Ramsey.

The airlines kept track of passenger origin and destination and asked each passenger to fill out an economic information post card. Volunteer interviewers questioned the pilots of general aviation aircraft before take-off and after landing.

James D. Ramsey, state aeronautics director, said the results of the survey will not be known until the end of the year.

The results will be used to provide the statistical basis to enable sound planning here to allow our state to take advantage of the transportation and economic value of aviation in the years to come, he said.

One typical day during the survey, drawn out of the file as a sample, showed 512 interviewers recorded almost 4,000 general aviation aircraft operations. Passenger information cards were not fully returned for the sample day, said Ramsey.

## JUST REMINISCING

Items Taken from the Files of The Chelsea Standard

### 4 Years Ago . . .

Thursday, Sept. 11, 1958—Frederick Anderson, a member of the U. of M. ROTC, has received his commission as a second lieutenant in the Marine Corps and is now stationed at the officers basic training school at Quantico, Va.

Elaine Walker, senior class float queen, was chosen "Queen of the 1958 Community Fair."

Gerry Eschbach's Hereford steer, judged grand champion at the Chelsea Community Fair was purchased at the stock sale for a record price of 71 cents per pound by Fred Schumm, Jay Rucker bought the reserve champion, a shorthorn steer exhibited by its owner, Kenny Stoker.

A Civil Defense evacuation exercise held Sunday afternoon brought 397 persons in 97 cars from the "evacuation area" (Ypsilanti) to Chelsea.

Included among a group of 12 YMCA boys from various parts of Michigan who accompanied J. Arthur Redner of Battle Creek on a canoe trip into virgin territory in northern Canadiana wilds were Howard and Dudley Holmes and Mahlon C. Dunkel.

Couples from Chelsea who are at St. Joseph and Benton Harbor for the Kiwanis district convention are the L. P. Vogels, A. J. Palmers, George P. Staffans, L. G. Palmers, P. G. Schaibles, John Cummings, Howard Boyda, M. B. McGaffigan, Conrad Lehman and O. D. Schneiders.

Ginsburg Camp at Leelanau Lake, located and conducted by the Jewish Center of Detroit, closed for the season last Saturday, Oct. 11.

Thursday, Sept. 13, 1958—Howard F. Brooks and his helpers are at work laying the brick for the new residence of the Mr. J. Baxters on East Middle St.

Included among a group of 12 YMCA boys from various parts of Michigan who accompanied J. Arthur Redner of Battle Creek on a canoe trip into virgin territory in northern Canadiana wilds were Howard and Dudley Holmes and Mahlon C. Dunkel.

Couples from Chelsea who are at St. Joseph and Benton Harbor for the Kiwanis district convention are the L. P. Vogels, A. J. Palmers, George P. Staffans, L. G. Palmers, P. G. Schaibles, John Cummings, Howard Boyda, M. B. McGaffigan, Conrad Lehman and O. D. Schneiders.

Ginsburg Camp at Leelanau Lake, located and conducted by the Jewish Center of Detroit, closed for the season last Saturday, Oct. 11.

Thursday, Sept. 13, 1958—Howard F. Brooks and his helpers are at work laying the brick for the new residence of the Mr. J. Baxters on East Middle St.

Included among a group of 12 YMCA boys from various parts of Michigan who accompanied J. Arthur Redner of Battle Creek on a canoe trip into virgin territory in northern Canadiana wilds were Howard and Dudley Holmes and Mahlon C. Dunkel.

Couples from Chelsea who are at St. Joseph and Benton Harbor for the Kiwanis district convention are the L. P. Vogels, A. J. Palmers, George P. Staffans, L. G. Palmers, P. G. Schaibles, John Cummings, Howard Boyda, M. B. McGaffigan, Conrad Lehman and O. D. Schneiders.

Ginsburg Camp at Leelanau Lake, located and conducted by the Jewish Center of Detroit, closed for the season last Saturday, Oct. 11.

Thursday, Sept. 13, 1958—Howard F. Brooks and his helpers are at work laying the brick for the new residence of the Mr. J. Baxters on East Middle St.

Included among a group of 12 YMCA boys from various parts of Michigan who accompanied J. Arthur Redner of Battle Creek on a canoe trip into virgin territory in northern Canadiana wilds were Howard and Dudley Holmes and Mahlon C. Dunkel.

Couples from Chelsea who are at St. Joseph and Benton Harbor for the Kiwanis district convention are the L. P. Vogels, A. J. Palmers, George P. Staffans, L. G. Palmers, P. G. Schaibles, John Cummings, Howard Boyda, M. B. McGaffigan, Conrad Lehman and O. D. Schneiders.

Ginsburg Camp at Leelanau Lake, located and conducted by the Jewish Center of Detroit, closed for the season last Saturday, Oct. 11.

Thursday, Sept. 13, 1958—Howard F. Brooks and his helpers are at work laying the brick for the new residence of the Mr. J. Baxters on East Middle St.

Included among a group of 12 YMCA boys from various parts of Michigan who accompanied J. Arthur Redner of Battle Creek on a canoe trip into virgin territory in northern Canadiana wilds were Howard and Dudley Holmes and Mahlon C. Dunkel.

Couples from Chelsea who are at St. Joseph and Benton Harbor for the Kiwanis district convention are the L. P. Vogels, A. J. Palmers, George P. Staffans, L. G. Palmers, P. G. Schaibles, John Cummings, Howard Boyda, M. B. McGaffigan, Conrad Lehman and O. D. Schneiders.

Ginsburg Camp at Leelanau Lake, located and conducted by the Jewish Center of Detroit, closed for the season last Saturday, Oct. 11.

Thursday, Sept. 13, 1958—Howard F. Brooks and his helpers are at work laying the brick for the new residence of the Mr. J. Baxters on East Middle St.

Included among a group of 12 YMCA boys from various parts of Michigan who accompanied J. Arthur Redner of Battle Creek on a canoe trip into virgin territory in northern Canadiana wilds were Howard and Dudley Holmes and Mahlon C. Dunkel.

Couples from Chelsea who are at St. Joseph and Benton Harbor for the Kiwanis district convention are the L. P. Vogels, A. J. Palmers, George P. Staffans, L. G. Palmers, P. G. Schaibles, John Cummings, Howard Boyda, M. B. McGaffigan, Conrad Lehman and O. D. Schneiders.

Ginsburg Camp at Leelanau Lake, located and conducted by the Jewish Center of Detroit, closed for the season last Saturday, Oct. 11.

Thursday, Sept. 13, 1958—Howard F. Brooks and his helpers are at work laying the brick for the new residence of the Mr. J. Baxters on East Middle St.

Included among a group of 12 YMCA boys from various parts of Michigan who accompanied J. Arthur Redner of Battle Creek on a canoe trip into virgin territory in northern Canadiana wilds were Howard and Dudley Holmes and Mahlon C. Dunkel.

Couples from Chelsea who are at St. Joseph and Benton Harbor for the Kiwanis district convention are the L. P. Vogels, A. J. Palmers, George P. Staffans, L. G. Palmers, P. G. Schaibles, John Cummings, Howard Boyda, M. B. McGaffigan, Conrad Lehman and O. D. Schneiders.

Ginsburg Camp at Leelanau Lake, located and conducted by the Jewish Center of Detroit, closed for the season last Saturday, Oct. 11.

Thursday, Sept. 13, 1958—Howard F. Brooks and his helpers are at work laying the brick for the new residence of the Mr. J. Baxters on East Middle St.

Included among a group of 12 YMCA boys from various parts of Michigan who accompanied J. Arthur Redner of Battle Creek on a canoe trip into virgin territory in northern Canadiana wilds were Howard and Dudley Holmes and Mahlon C. Dunkel.

Couples from Chelsea who are at St. Joseph and Benton Harbor for the Kiwanis district convention are the L. P. Vogels, A. J. Palmers, George P. Staffans, L. G. Palmers, P. G. Schaibles, John Cummings, Howard Boyda, M. B. McGaffigan, Conrad Lehman and O. D. Schneiders.

Ginsburg Camp at Leelanau Lake, located and conducted by the Jewish Center of Detroit, closed for the season last Saturday, Oct. 11.

Thursday, Sept. 13, 1958—Howard F. Brooks and his helpers are at work laying the brick for the new residence of the Mr. J. Baxters on East Middle St.

Included among a group of 12 YMCA boys from various parts of Michigan who accompanied J. Arthur Redner of Battle Creek on a canoe trip into virgin territory in northern Canadiana wilds were Howard and Dudley Holmes and Mahlon C. Dunkel.

Couples from Chelsea who are at St. Joseph and Benton Harbor for the Kiwanis district convention are the L. P. Vogels, A. J. Palmers, George P. Staffans, L. G. Palmers, P. G. Schaibles, John Cummings, Howard Boyda, M. B. McGaffigan, Conrad Lehman and O. D. Schneiders.

Ginsburg Camp at Leelanau Lake, located and conducted by the Jewish Center of Detroit, closed for the season last Saturday, Oct. 11.

Thursday, Sept. 13, 1958—Howard F. Brooks and his helpers are at work laying the brick for the new residence of the Mr. J. Baxters on East Middle St.

Included among a group of 12 YMCA boys from various parts of Michigan who accompanied J. Arthur Redner of Battle Creek on a canoe trip into virgin territory in northern Canadiana wilds were Howard and Dudley Holmes and Mahlon C. Dunkel.

Couples from Chelsea who are at St. Joseph and Benton Harbor for the Kiwanis district convention are the L. P. Vogels, A. J. Palmers, George P. Staffans, L. G. Palmers, P. G. Schaibles, John Cummings, Howard Boyda, M. B. McGaffigan, Conrad Lehman and O. D. Schneiders.

## BOOKS

From the McKim Library

HOURS: Monday-Saturday 12 Noon-5 p.m. Evenings Mon. and Fri. 7-9 p.m.

ADULT BOOKS

"English One-Act Plays of Today" Fitzjohn

"The Forbidden Garden" Curtis

"Wicked Lady" Fletcher

"Ambassador Extraordinary" Bonner

"Long and Happy Life" Price

"The Bible Salesman" Stone

"1,000 Questions Answered About Space" Newton

"Portrait in Brownstone" Auchincloss

"Mainstreams of Modern Art" Canaday

"The New Illustrated Medical Encyclopedia for Home Use" Rothenberg

JUVENILE BOOKS

"If I Ran the Zoo" Dr. Seuss

"Why . . . ? Because" Stover

"Moon of Mutiny" Del Rey

"Rich Boy, Poor Boy" Dubois

"Daniel Boone" Brown

"Zig Zag Zappa" Hall

"Amelia Earhart, First Lady of the Air" Jerry Seibert

"It's Fun To Speak French" Bragdon

Fancy Jonathon and McIntosh

APPLES

Bring Containers and Pick Your Own

\$1.50 bu. or 3 bu. \$4.00

BEISIEGEL ORCHARDS

Telephone NO 8-7563

2645 Peters Road Dexter, Mich.

(Across from King-Seely Factory)

## Tough new '63 Chevrolet Trucks are here!

THE ONES THAT WHIPPED THE BAJA RUN...TOUGHEST UNDER THE SUN... TO SHOW THE WORTH OF NEW ENGINES, FRAMES AND SUSPENSIONS!



Sometimes the caravan crept along for hours in low gear. It took 17 days to go 1,068 miles! This is the road near Loreto.

Round trip from Detroit to the end of the Baja Peninsula is over 8,000 miles.



Millions of years ago nature fashioned a proving ground for trucks that man can never duplicate. Today it is known as the Baja (bah' hah) California Peninsula, Mexico.

These pictures give you only a bare idea of the place. The road is fine for 140 miles below the U.S. border. Then the beating begins. Rocks and hard-baked ruts bang, jab and jerk the trucks from stem to stern. Loose sand makes them struggle and strain. Dust chokes them. Heat roasts them. Rivers drench them.

The Baja Run took this Chevrolet truck caravan 17 days to go the 1,068 miles. All the trucks performed magnificently. Not one was forced to drop out because of mechanical difficulty.

Trucks that can take this kind of beating can take on your toughest truck jobs. Come in now and see tough quality-built '63 Chevrolet trucks with all their new improvements.

CHEVROLET

QUALITY TRUCKS COST LESS

See the "New Reliabilities" now at your Chevrolet dealer's!

SPAULDING CHEVROLET SALES & SERVICE  
 CHELSEA, MICHIGAN

**BANK AUTO LOANS ARE BEST!**

IT'S JUST GOOD HORSE SENSE to choose a car financing plan like ours that offers low cost, convenience and a bank contact for future borrowing.

**3 1/2% on Savings 4% on Time Certificates**  
 Book Accts. of Deposit for 1 Yr.

**CHELSEA STATE BANK**

Member Federal Reserve System

Member Federal Deposit Insurance Corp.

**Uncle Lew from Lima Says:**

DEAR MISTER EDITOR:

Lewkon we had what them Congressmen would call a filibuster at the country store Saturday night. Ed Doolittle took the floor and it was harder to get him to set down than it is to get Senator Morse to shut up.

First off, Ed was upset over reading in the papers where Senator Gruening of Alaska got up in the Senate the other day and gave a commercial for his new state. He announced that men was outnumbering women in Alaska by 22,687 as of now and advised women to hurry to Alaska afore the gap closed.

Clem Webster allowed as how they used the Senate for everything else and he didn't see nothing wrong with Senator Gruening trying to get rid of the bachelors in Alaska. He recollected once when Senator Byrd of Virginia got up in the Senate and give a recipe for apple pie, advising that nothing but Virginia apples was fitten for the best pies. Furthermore, claimed Clem, Senator Byrd even had the recipe printed in the Congressional Record. Anyhow, allowed Clem, bachelors ain't noted for raising large families and we got to keep large families coming along to meet the tax load. Come to think about it, said Clem, it was a mighty patriotic thing for Senator Gruening to git up in the Senate and advertise the shortage of women in Alaska.

Bug Hookum was lamenting it was a great pity them Senators didn't spend more time on items like the shortage of women in Alaska and apple pie in Virginia would save the taxpayers billions.

Zeke Grubb, who is a authority on women, put the lid on this subject by claiming it was a dead issue by now anyhow. Zeke reckoned that 24 hours after the Senator's announcement, Alaska was stampeding with women.

Another item Ed claimed upset him a bit was that piece in our latest pamphlet from the Department of Agriculture announcing some college was gitting watermelon vines that would grow six or eight melons to the vine like tomato vines. Ed claimed the country was already overstocked with watermelons and afore we knew it the taxpayers would be paying millions for storing the surplus.

All the fellers was agreed that folks would have more peace of mind if the Department of Agriculture would quit putting out any more pamphlets







# RENT • BUY • TRADE • HIRE • SERVICE • WANTED • ADVERTISING • HELP WANTED • EMPLOYMENT • OPPORTUNITIES

## WANT ADS

## The Chelsea Standard

**WANT AD RATES**  
PAID IN ADVANCE—All regular advertisements, 50 cents for 15 words or less, each insertion. Count each figure as a word. For more than 15 words add 5 cents per word for each insertion. "Blind" ads for box number add 50 cents per insertion.

**CHARGE RATES**—Same as each in advance, with 15 cents booking charge if not paid before 5 p.m. Tuesday preceding publication. Pay in advance, and cash or stamps and save 15 cents.

**CARDS OF THANKS or MEMORIALS**—Single paragraph style, \$1.00 per column inch for 50 words or less; 2 cents per word beyond 50 words. Minimum, 1 inch.

**DISPLAY WANT ADS**—Rate, \$1.10 per column inch for 50 words or less; 2 cents per word beyond 50 words. No borders or boldface type. **COPY DEADLINE**—5 p.m. Tuesday, week of publication.

**FOR SALE**—2 apt. home, each apt. has 5 rooms and bath. New storm windows, oil furnace and electric water heater. 165 Cavanaugh Lake Rd. 19

**BETTER FENDER BRACES** are another Schwinn extra... while ordinary braces bend easily these sturdy braces stay firm for years. Merkel Brothers, authorized dealer. 12

## GAMBLES SPECIAL OFFER

USE OUR NEW Rug and Furniture Cleaner FREE for 2 hours with purchase of each bottle of Fast Foam at \$1.98 (Cleans up to 4 average 9x12 rugs). A new miracle machine which feeds live cleaning foam to shampoo and restore the nap of your rugs and furniture. 12

## GAMBLES

**PONIES**—A few good park ponies for use until the end of April, 1963; also some for sale. Call after 5:30 p.m., GR 9-2465. 12

**EXPERIENCED WAITRESS** wanted, full time at F. and M., 104 North Main St. 12

## NOW FORMING SATURDAY EVENING

## MARRIED COUPLES BOWLING CLUB

IDEAL FOR THOSE working 2nd shift in factories. 12

## CONTACT CHELSEA LANES

GR 5-8141 12  
ZIG ZAG equipped SINGER in beautiful wood console. Like new. Makes designs, button holes, etc. For \$39.60 or pay \$1.10 per week. Call GR 5-8211. 12

## FARM LOANS!

Buy land, livestock, refinance. Free Appraisals - Fast Service 5 1/2% Interest

## Federal Land Bank

ROBERT HALL, MGR.  
2221 Jackson Ave.  
Telephone Normandy 5-8189  
Ann Arbor, Mich. 271

## FOR REAL DOLLAR SAVINGS,

Be sure and see us before you buy any new or used car. Palmer Motor Sales Inc. Your Ford Dealer for over 50 years. 431

## TRAVEL TRAILERS—13 ft. and up—10x55 ft. trailers—Orlin R. Jones Trailer Sales, Gregory, Mich. Phone Alpine 6-2655. 431

**DID YOU KNOW?** That only light fast color pigments are used in the manufacture of Dutch Boy Sash and Trim Colors. Its sharp, high gloss finish, is unmatched for durability. Use on such shutter doors and trim. Merkel Brothers 12

**FOR SALE**—1955 Buick Special. \$250. Call after 5 p.m. Phone 475-8467. 12

## Call Grinnell's MAIL ORDER SERVICE

Thirty LP Albums  
America's Top Sellers  
Regular \$3.98 Only \$2.77  
Regular \$4.98 Only \$3.77  
Regular \$5.98 Only \$4.77

By Mail or Come To  
**GRINNELL'S**  
828 South Main Ann Arbor  
Phone NO 2-5667 801

**APPLES**—Wolf River, Macintosh, Fall Pippin, Rhode Island Greening. Sweet cider also for sale week-ends. Clarence Lehman, 15307 Cavanaugh Lake Rd. GR 9-8581 131

**FOR TRACTORS and equipment.** Also New Holland machinery. Sales and service. Cobb & Schreier, Stockbridge. Phone Ulysses 1-4525. 481

## SAND - GRAVEL STONE - FILL DIRT

Basement Digging - Bulldozing  
Crane Work—Beach Building  
FREE ESTIMATES  
**BOB FITZSIMMONS**  
North Lake  
Phone Chelsea GR 5-5701 881

## Staffan Funeral Home

FUNERAL DIRECTORS FOR THREE GENERATIONS  
124 PARK STREET PHONE GR 5-4417

## WANT ADS

**BABYSITTER WANTED** in my home Monday-Friday. Live in or out. Call after 5 p.m., GR 5-8384. 12

## Septic Tanks And Drain Fields

**INSTALLED TO COUNTY CODE SPECIFICATIONS.**

Septic tanks from 300 gal. to 2,000 gal. available for prompt installation. 12

## HILLTOP PLUMBING

**BOB SHEARS**  
201 S. Main Phone 479-3851 21

**OUT OF WORK OR ON SHORT-TERM HOURS?** Write us immediately regarding opportunities to sell Rawleigh Products, full time to consumers in Chelsea. No experience needed to start. For interview, see or write Rawleigh, Dept. MC1-752-198, Freeport, Me. 12

## USED EQUIPMENT.

New this summer, Yardman self-propelled rotary lawn mower. A buy. 12

Used Toro Rototiller. 12

Several used tractors and power mowers. 12

26" Boy's Bike, good condition. 12

## Chelsea Hardware

**FOR RENT**—Upstairs apartment in Chelsea. Three large rooms, bath and utility room. Stove and refrigerator furnished. Private entrance. Call GR 8-2324. 12

**WANTED TO RENT**—A 3-bed. room home, if possible, with land. Write Julius Moravik, 10424 Borgman Ave., Belleville, Mich. 13

## Sand-Gravel-Black Dirt

**BULLDOZING - DIGGING BASEMENTS - DITCHING**

**C. Trinkle & Son**  
12241 Scio Church Road  
Ralph Trinkle, Owner  
Phone GR 9-1296 371

**ATTENTION**—New location for re-upholstering. Free pick-up and delivery. For estimates, phone GR 5-8575, after 5 p.m. phone GR 9-4882. 305 So. Main St., Chelsea. 521

**FREE**—Gift given away every week celebrating 75th Anniversary of Marathon. Come out and sign entry blank. Nothing to buy. This week's gift is a 4-piece Corning Ware Casserole Set. Detling's Marathon, South Main St. 12

## Pittsburgh Rubberized Wallhide Paint

**NOW ON SALE**  
\$4.98 per gal., \$1.59 qt.

## Chelsea Hardware

**FOR SALE BY OWNER**—Country home, 5 miles N.W. of Chelsea. Seven rooms and bath. Oil furnace. Fireplace. Water heater. Etc. stove. Some furn. Garage. Alum. screens and storm. Small stream. Cash or terms. Phone Ypsilanti HU 2-5688. 12

## Pittsburgh Paints

**OVER 3,000 COLORS**

## Chelsea Hardware

**CARPENTER WORK**—Remodeling, additions or repairs. Call Tom Smith. Phone 479-3201. 15

**ROOM FOR RENT**—Gentlemen preferred. 124 Lincoln St. Phone GR 5-8148. 81

**FOR SALE**—Large, year-round, 49 ft. Crooked Lake front home. Basement, garage, fireplace, living room carpeted plus separate rental unit (approx. \$1,100 gross). Immediate possession. Minimum \$3,000 down. Phone NO 8-8618. 61

## WANT ADS

**FOR RENT**—Modern 4-room house and garage. Nicely furnished. Reasonable rent to responsible party from September until June. 846 Ridge Rd., Cavanaugh Lake. Call NO 8-9019. 12

## A-1 USED CARS

We're Cleaning Out Our Used Cars. Check Our Prices for Real Values!

1962 Ford Galaxie 500 4-Door Demonstrator. V-8, Cruise-O-Matic, power steering, all vinyl trim, white wall tires, wheel covers, back-up light, clock, new car guarantee. Only \$2,895.00 12

1961 Thunderbird Hard Top. Owner's personal car. Power steering, Thunderbird V-8, power steering. Like new inside and out! \$3,195.00 12

'61 Falcon 2-Door  
'60 Comet 4-Door  
'60 Falcon 2-Door  
'68 Chev 2-Door  
'58 Ford Ranch Wagon  
'58 Rambler Wagon  
'57 Mercury 2-Door  
'57 Buick 2-Door  
'57 DeSoto Hard Top  
'56 Studebaker 4-Door  
'54 Ford Ranch Wagon  
'51 Dodge 4-Door  
'56 Ford 1/2-Ton Pick-Up

Easy Financing. Arranged G & W 1-Year Guarantee

**2 BIG LOTS**  
Corner of Orchard and S. Main and 222 S. Main  
GR 5-3281

## Palmer Motor Sales, Inc.

**SEWING MACHINE**—Singer Zig Zag. Does all your fancy sewing plus button holes, blind-hem, overcasting, etc. Only slightly used. Pay \$58.00 cash or take out payments of \$1.28 per week. Write Credit Manager, Box SE 20, care of Chelsea Standard. 12

**WANTED**—Baby-sitting, five days a week by responsible adult. Call GR 5-8303. 13

**FOR SALE**—12-hole metal self-feeder, like new. \$65. John Miles. GR 5-8334. 13

## NATOLEN LIVESTOCK COMMISSION CO.

Phone KE 4-201  
Auction, every Monday, 2 p.m. We have buyers for all kinds of livestock. Order of sale: feeder pigs, dairy cattle, feeder cattle, sheep, calves, butcher cattle, butcher hogs. 841

**WANTED**—Ironings. Men's work clothes preferred. GR 5-5523. 13

**ROOM FOR RENT**—With private bath and parking space. 163 Orchard St. Phone GR 5-4393. 12

## Look To Grinnell's In '62

New Spinlet Pianos from \$489  
New Hammond Organs (2 manual) from \$895  
Used Spinlets at \$295  
Rebuilt Grand from \$595  
Assorted Uprights from \$39.50 71

## GRINNELL'S

823 South Main Ann Arbor  
Phone NO 2-5667 801

**FOR RENT OR SALE**—2-bedroom home. 533 Chandler St. Phone GR 9-1242. 111

## G. G. HOPPER

Painting & Decorating  
Building Contractors  
Phone GR 5-5581  
Gregory Alpine 6-2148 71

**WANTED**—Well-furnished apartment, in nice neighborhood, by man and his wife. Need by Oct. 10. Send information to Box ER 13 care of Chelsea Standard. 12

## Call Grinnell's MAIL ORDER SERVICE

Thirty LP Albums  
America's Top Sellers  
Regular \$3.98 Only \$2.77  
Regular \$4.98 Only \$3.77  
Regular \$5.98 Only \$4.77

By Mail or Come To  
**GRINNELL'S**  
828 South Main Ann Arbor  
Phone NO 2-5667 801

**APPLES**—Wolf River, Macintosh, Fall Pippin, Rhode Island Greening. Sweet cider also for sale week-ends. Clarence Lehman, 15307 Cavanaugh Lake Rd. GR 9-8581 131

**FOR TRACTORS and equipment.** Also New Holland machinery. Sales and service. Cobb & Schreier, Stockbridge. Phone Ulysses 1-4525. 481

## SAND - GRAVEL STONE - FILL DIRT

Basement Digging - Bulldozing  
Crane Work—Beach Building  
FREE ESTIMATES  
**BOB FITZSIMMONS**  
North Lake  
Phone Chelsea GR 5-5701 881

## Call Grinnell's MAIL ORDER SERVICE

Thirty LP Albums  
America's Top Sellers  
Regular \$3.98 Only \$2.77  
Regular \$4.98 Only \$3.77  
Regular \$5.98 Only \$4.77

By Mail or Come To  
**GRINNELL'S**  
828 South Main Ann Arbor  
Phone NO 2-5667 801

**APPLES**—Wolf River, Macintosh, Fall Pippin, Rhode Island Greening. Sweet cider also for sale week-ends. Clarence Lehman, 15307 Cavanaugh Lake Rd. GR 9-8581 131

**FOR TRACTORS and equipment.** Also New Holland machinery. Sales and service. Cobb & Schreier, Stockbridge. Phone Ulysses 1-4525. 481

## SAND - GRAVEL STONE - FILL DIRT

Basement Digging - Bulldozing  
Crane Work—Beach Building  
FREE ESTIMATES  
**BOB FITZSIMMONS**  
North Lake  
Phone Chelsea GR 5-5701 881

## Call Grinnell's MAIL ORDER SERVICE

Thirty LP Albums  
America's Top Sellers  
Regular \$3.98 Only \$2.77  
Regular \$4.98 Only \$3.77  
Regular \$5.98 Only \$4.77

By Mail or Come To  
**GRINNELL'S**  
828 South Main Ann Arbor  
Phone NO 2-5667 801

**APPLES**—Wolf River, Macintosh, Fall Pippin, Rhode Island Greening. Sweet cider also for sale week-ends. Clarence Lehman, 15307 Cavanaugh Lake Rd. GR 9-8581 131

**FOR TRACTORS and equipment.** Also New Holland machinery. Sales and service. Cobb & Schreier, Stockbridge. Phone Ulysses 1-4525. 481



## WANT ADS

**FOR SALE**—Sand-grown potatoes, red or white. Kiss Farm, 6945 Werker Rd. 12

**FOR SALE**—4-hole hog feeder; 8 7/4-ft. planks; 55-gal. gasoline barrels with faucets. GR 5-5161. 12

**RUMMAGE WANTED** by K. of C. for their annual sale, Oct. 5 and 6. For pick-up phone GR 5-5711 or GR 5-8269. 13

## You Still Have Time TO SOW GRASS SEED THIS FALL

Fertilizer sown now promotes thickening of top growth and deep root growth. See us for Scotts lawn products. 12

**BULK SEED - FERTILIZER PEAT MOSS**  
Rent-out Rototiller, Turf Slicer, Rollers and Seeders. 12

## Chelsea Hardware

**FOR SALE**—4 wooden rowboats, \$10 each. Phone GR 9-4532. 12

**FOR SALE**—5-family apartment building. Each apartment has private entrance and bath. Phone GR 5-4851 after 5 p.m. 12

## REAL ESTATE

We have several lots for sale, some at lakes. Sizes from 68' to 132' wide and 182' to 610' deep. Almost new modern home at lake, nice beach, fenced with Cyclone fence. 2 apt. home on Old US-12 E. Upper apt. has 3 large rooms and bath plus utility room. Lower apt. 5 rooms and bath. About 1 acre of ground. Apartments separate in every way from one another. Will finance. 81

**SCRIPTER REAL ESTATE**  
Minnie Lesser, Broker  
Chelsea Phone GR 9-8794 71

**FOR RENT**—Upper large unfurnished 2-bedroom apartment, 128 East Summit St. Fine location, reasonable rent. Utilities included, except electric lights and electric stove if used. Front private entrance. References required. Inquire lower apartment or call GR 5-8385. 111

## EVERGREENS

**BLUE SPRUCE PRITZER JUNIPERS ARBORVITAE YEW RED BARBERRYS**  
Walter Beutler  
405 Freer Rd. Chelsea 12

**IT WILL PAY YOU \$—**to drive out and look at our used car selection. Ample parking space. Chelsea Motors, Inc. GR 5-5011 101

## FOR SALE

**MODERN, 2-bedroom; lake home, sleeps six. Oil heat, utility room, garage. Price \$8,500. \$1,500 down, owner will finance balance.**

**IN CHELSEA**—Insulated modern house, 5 rooms, bath and utility room, hardwood floors, enclosed porch, modern kitchen, gas furnace, garage, landscaped lot, shrubbery and flowers. 12

**CHELSEA SCHOOL DISTRICT**—165 acre farm, good 7-room and bath home, modern kitchen, basement with nearly new oil furnace, electric water heater, attached garage. Large hip-roof barn, 25 cow ties, milk house, large tool shed, chicken and brooder house, private spring-fed fishing lake. Price, \$40,000. 12

List your real estate with R. D. Miller for fast, efficient service.

## HAVE BUYERS FOR CHELSEA HOMES.

## R. D. MILLER

REAL ESTATE BROKER  
Office: 15775 Cavanaugh Lake Road  
Post Office Box 358 Chelsea, Michigan  
Phone: GR 9-5892 12

## WANT ADS

**REPAIR STORM WINDOWS** now before cold weather. Glass and glazing at reasonable prices. Chelsea Hardware. 12

## CLOSE-OUT SPECIAL

LOW PRICES on oil and LP gas space heaters while they last: 30,000, 50,000, 70-80,000. Call 12

## Gallup-Silkworth Co. Inc.

2140 South State St. Ann Arbor  
Phone NO 5-6161 12

**FOR SALE**—A good business in a small town. Well located with reasonable rent. Groceries, beer and wine take-out, large assortment of baked goods daily, dairy bar, dry cleaning agency. Forner's Take Out, phone Grass Lake 4521. 51

## SPORTSMEN

Buy Now and Save!  
**SUPER-X 12 GA. NO. 6 SHOT** \$2.98 box 12

Insulated Boots — \$7.50 pr.  
Reversible Rubber Jackets With Hoods — \$4.79

See Our Selection of WINTER SPORTSMEN CAPS. 12

## Chelsea Hardware

**FOR SALE**—Stove, refrigerator, dinette set; also two girls' snowsuits size 2 and 3. Call 479-3242. 81

## Real Estate for Sale

**3 FAMILY HOUSE**—Let me show you the figures on this house. It is a real money maker and may be purchased for as little as \$1,500 down. 12

**2 BEDROOMS**—Livingroom, kitchen, utility room and full bath. New well. Lake privileges. \$6,000. Terms can be arranged with as little as \$1,000 down. 12

**SUGARLOAF LAKE**—Large 2 story cottage. Perfect for family fun. Furnished \$7,500. 12

**4 ACRES**—With 4 bedroom house. New furnaces, well, pump, etc. \$11,500. 12

**RETIREMENT HOUSE**—Two bedrooms, full basement. Gas heat. Garage. Low price. 12

**CAVANAUH LAKE**—Year around home. Nicely remodeled. \$12,000. 12

**NEW THREE BEDROOM**—Carpeted livingroom. Large recreation room. Nicely landscaped. 12

## Clarence Wood

646 Flinders St.  
Greenwood 9-4803  
RUDY SCHNEIDER, BROKER  
Normandy 5-8969 12

## CLIFF'S WELDING SERVICE

524 1/2 North Main St.  
(Behind Production Machining)  
Also, complete portable equipment. Welding, cutting, brazing, pipe thawing. 12

Phone 475-8731 or GR 5-8252 12

**FOR SALE**—Custom-made wagon unloaders, false endgate irons, rollers, bearings. Sylvester Shoner, 7117 Grand River, Brighton, AC 9-2418. 14

For the Best in  
**POLE BUILDINGS**  
Be sure to see "SMILEY" call on Write  
**JOHN LIVERMORE**  
Gregory, Alpine 6-2827 881

**FOR RENT**—Furnished upstairs apartment. Suitable for couple. 237 Railroad St., Chelsea. Call Parkway 1-4817, Wayne, Mich. 12

**FOR SALE**—New year around lake front cottage, 2 bedrooms, large enclosed porch, furnace, well insulated, birch paneled, formica kitchen cabinets, automatic electric range, all new furniture, sand beach, boat and motor, large lot. Joslin Lake entrance on Roopke Rd. Owner, John Nollar, 12307 Roopke Rd., Gregory, Mich. 17

## WANT ADS

**FOR SALE**—Easy washer. \$35. Phone GR 5-5546. 11

## CLOGGED SEWER

**Reynolds Sewer Service**

We Clean Sewers Without Digging  
Drains Cleaned Electrically  
FREE ESTIMATES  
3-YEAR GUARANTEE  
Phone Ann Arbor NO 2-5277

"Sewer Cleaning Is Our Business—Not a Side Line" 881

**CHIMNEYS BUILT and repaired.** All kinds of cement work. J. D. Quigley. GR 5-8510. 13



# SENSE LAGGING

Senator Cannon (D, N.Y.) said the United States stands defenseless against attacks that could come from orbiting Russian space ships.

Cannon, a brigadier general and pilot in the Air Force reserve, said the best of my knowledge, no defense whatever exists against any military attack that might be made from space region even though such attacks are within the present ability of the Soviet Union.

Michigan was the first state to include in its constitution for the alignment of public libraries. There are 310 public libraries and 1,000 school libraries in state today.

## Chelsea Theatre

PHONE GR 9-2211  
CHELSEA, MICHIGAN  
SAT. SEPT. 21-22  
Their nights are as fast and frantic as their days!

## THE ANTHEMS

ARTIST: "The Inquisit Visit"  
SUN.-MON.-TUES. SEPT. 23-24-25  
Most Exciting Adventure Comedy in Years!

PLUS: SPORT & CARTOON

## Con-Con Report

**EDITORS NOTE:** This is No. 14 in a series about the proposed new Michigan Constitution. Additional articles will appear in subsequent weeks.

Owners of real and personal property are provided with new safeguards against exorbitant taxation in the proposed new Michigan constitution.

There was a general feeling among delegates to the convention that property, as a base for taxation in Michigan, is frequently overburdened. New measures were written into the state's proposed basic law to protect owners of real and personal property from excessive levies.

A major revision in the property tax structure is that which eliminates the present constitutional requirement of assessment at cash value. The new constitution specifies that the standard for assessment shall be set by the legislature and shall not exceed 50 percent of cash value.

Recognizing that some jurisdictions currently assess some property in excess of this limit, effective date of the limitation is postponed by the new document until 1966.

A standard of value fixed by law gives the legislature freedom to change the standard to reflect changes in the general price structure. Current inequities have resulted in many cases from the inability of assessors, with inadequate staffs, to keep up with changes in the dollar value of real property. Personal property assessments have tended to follow inflationary trends more rapidly.

The 15-mill limit (\$15 per \$1,000 of valuation) remains effective in the new document and county tax allocation boards, set up by statute, would continue to be responsible for allocating the millage among the county, township, and school districts.

However, the new section would

permit the legislature to authorize initiative procedure within a county which would allow a majority of the qualified electors to adopt a fixed division of the millage among the local units, so long as the total does not exceed 18 mills. This fixed division and limit voted by the electors would stand until such time as they change it in another vote.

This exception to the 15-mill limitation would be entirely a "local option" matter which would never be effective without authorization of a majority of the electors in the county affected. The setting of a fixed division of millage would do away with the necessity for a county tax allocation board and would be welcomed in some areas where the annual tax allocation sessions have become highly controversial affairs.

Still another new protection for property owners in the proposed document is a provision which places limits on eligibility for voting on millage increase proposals. The new constitution specifies that such tax increases proposed for periods longer than five years may be authorized only by a majority vote of property owners and their spouses — those upon whom the burden of additional tax will directly fall.

This is a change from the current provisions which permit all qualified electors to ballot on long-term millage increases.

**ATTACKED BY SHARK**  
Brownsville, Tex. — While fishing in the Gulf of Mexico, Hans Fix, 40, was bitten on the right leg by a shark.

Rescuers pulled him from the water, placed a tourniquet on the leg, but Fix died in the hospital from loss of blood and shock.

A physician said Fix probably carried a stringer of fish attached to his belt and blood dripping into the water attracted the shark.

The interchange of the Ford and Lodge freeways in Detroit is one of the world's busiest highway intersections. An average of nearly 300,000 cars a day travel through the tri-level interchange.

### ACROSS

1. Sloped waters  
2. City of England  
3. Period of time  
4. Roman  
5. Headed  
6. Musical drama  
7. Bird (pl.)  
8. Quivering  
9. Prepared  
10. Wooded  
11. Of a certain continent  
12. Compass point  
13. African  
14. Cold coin  
15. Bird  
16. British girl  
17. Years old  
18. Aspects  
19. To be of service  
20. Instructor  
21. Encounters  
22. Boldly  
23. To be ill  
24. Tree  
25. A rounded protrusion

### DOWN

1. To read metrically  
2. Knowledge  
3. Summertime  
4. Part of Bible (abbr.)  
5. Small digit  
6. Kind of coin  
7. Bird in folds  
8. Animal  
9. Person  
10. Whole  
11. Seize  
12. Tax  
13. Name in green  
14. Greek letter  
15. Vegetable dish  
16. Absorbed  
17. Possess  
18. Grass  
19. Clendenn  
20. Con weight  
21. American  
22. Measure of Argentine  
23. Body of water  
24. Go in  
25. Pro  
26. Soldier  
27. Dispatches  
28. Armadillo  
29. Shields  
30. Remains  
31. Greek letter  
32. Japanese coin  
33. Head covering  
34. Spanish dance  
35. Musical group  
36. Border of continent (pl.)  
37. Distinct part in a whole  
38. Those in office  
39. Retard  
40. Opposed to weather  
41. German title  
42. Enthusiasm  
43. The separate article  
44. Chinese weight

### Answer To Puzzle No. 724

1	2	3	4	5	6	7	8	9	10	11	12	13	14	15	16	17	18	19	20	21	22	23	24	25	26	27	28	29	30	31	32	33	34	35	36	37	38	39	40	41	42	43	44	45	46	47	48	49	50	51	52	53	54	55	56	57	58	59	60	61	62	63	64	65	66	67	68	69	70	71	72	73	74	75	76	77	78	79	80	81	82	83	84	85	86	87	88	89	90	91	92	93	94	95	96	97	98	99	100
---	---	---	---	---	---	---	---	---	----	----	----	----	----	----	----	----	----	----	----	----	----	----	----	----	----	----	----	----	----	----	----	----	----	----	----	----	----	----	----	----	----	----	----	----	----	----	----	----	----	----	----	----	----	----	----	----	----	----	----	----	----	----	----	----	----	----	----	----	----	----	----	----	----	----	----	----	----	----	----	----	----	----	----	----	----	----	----	----	----	----	----	----	----	----	----	----	----	----	-----

### PUZZLE NO. 725

1	2	3	4	5	6	7	8	9	10	11	12	13	14	15	16	17	18	19	20	21	22	23	24	25	26	27	28	29	30	31	32	33	34	35	36	37	38	39	40	41	42	43	44	45	46	47	48	49	50	51	52	53	54	55	56	57	58	59	60	61	62	63	64	65	66	67	68	69	70	71	72	73	74	75	76	77	78	79	80	81	82	83	84	85	86	87	88	89	90	91	92	93	94	95	96	97	98	99	100
---	---	---	---	---	---	---	---	---	----	----	----	----	----	----	----	----	----	----	----	----	----	----	----	----	----	----	----	----	----	----	----	----	----	----	----	----	----	----	----	----	----	----	----	----	----	----	----	----	----	----	----	----	----	----	----	----	----	----	----	----	----	----	----	----	----	----	----	----	----	----	----	----	----	----	----	----	----	----	----	----	----	----	----	----	----	----	----	----	----	----	----	----	----	----	----	----	----	----	-----

## FROM THE GOVERNOR'S CHAIR

By John B. Swainson

Lansing — There are several things which contribute to Michigan's record of traffic safety.

Good law enforcement, safety campaigns, improved highways — all play their part.

Another important factor is the popularity of driver education among Michigan's high school students.

This year, about 120,000 high school students throughout the state are enrolled in driver training classes.

Several studies have shown that drivers who have taken this training are only half as likely to be arrested for a driving violation as other drivers their age. And this also probably means that they are only about half as likely to get into accidents, since a law violation is involved in nearly all accidents.

The law making driver training available in each school district was one of several traffic safety laws enacted in 1955. Since the laws went into effect, Michigan has scored an annual decrease of 10 percent in traffic deaths.

Many safety authorities believe that Michigan's driver training program — one of the best in the nation — has played a big part in reducing the death toll.

The lesson in this is that being able to make a car move does not constitute being a capable driver. If students trained in driving can make an enviable safety record, they must have learned some of the habits of safe driving.

It might be a good idea for every driver to think over his driving skills and question whether he really knows how to drive a car properly, or did he stop learning after he found out how to make a car start and stop?

**ADJOURNMENT PERILS**  
Democratic leaders may have to choose between abandoning some major elements of President Kennedy's program or keep Congress in session until October.

The betting on Capitol Hill is that several of the Administration's pet measure are going to fall victim of the adjournment fever. Some candidates are anxious to campaign in an election in which 39 Senate and all House seats will be filled.

**SAVED BILLIONS**  
Defense Secretary McNamara, accused in some quarters of getting too much control, is convinced his personal item-by-item review of the proposed military budget last year saved up to \$4,000,000,000.

Former Army Secretary Stahr remarked that McNamara passed on 500 different budget items, some involving as little as a few thousand dollars.

Nearly 20,000 American families have acted as hosts for more than 2,700 international Far East Youth Exchange delegates from foreign countries. A total of 82 Michigan youths have visited 40 countries since the IFYE program started 15 years ago.

**THANK YOU**  
I wish to thank my friends for the flowers, gifts, cards and many acts of kindness during my stay in hospital and since my return home. They will never be forgotten and may God bless each one for remembering me. It was greatly appreciated.

Florence Boyce.

**THANK YOU**  
I wish to take this way of thanking all the men who assisted me in handling the gates and parking during the Chelsea Community Fair.

L. W. Kern,  
Chairman of Traffic

**CARD OF THANKS**  
We wish to extend our heart-felt thanks and appreciation for the many acts of kindness, messages of sympathy, beautiful floral offerings received from our kind friends and neighbors, and for the food brought in during our recent bereavement.

Mrs. John Potter  
Mr. and Mrs. Norwood Bush and family.

**THANK YOU**  
Our thanks and appreciation for the co-operation of women of the community who baked pies and donated food for the Community Fair cafeteria and the men and women who worked so faithfully. Special thanks to Fred Schumm for his expert guidance in the cafeteria project.

Mrs. Loren Koenigster  
Mrs. Lester Czarnecki  
Mrs. Warren Eisenbeiser  
Mrs. Robert Kuehmal  
Chairmen.

**THANK YOU**  
In this way we would like to express our thanks and appreciation to the Chelsea Fire Department for the fast and efficient response to our call-for-help Saturday in the early hours of the morning; many thanks, also, to the Loren Fletcher family for their acts of kindness during the fire and to all our friends and relatives who have offered help in cleaning up.

Ed and Betty Green and children.

**THANK YOU**  
In this way we would like to express our thanks and appreciation to the Chelsea Fire Department for the fast and efficient response to our call-for-help Saturday in the early hours of the morning; many thanks, also, to the Loren Fletcher family for their acts of kindness during the fire and to all our friends and relatives who have offered help in cleaning up.

Ed and Betty Green and children.

**THANK YOU**  
In this way we would like to express our thanks and appreciation to the Chelsea Fire Department for the fast and efficient response to our call-for-help Saturday in the early hours of the morning; many thanks, also, to the Loren Fletcher family for their acts of kindness during the fire and to all our friends and relatives who have offered help in cleaning up.

Ed and Betty Green and children.

**THANK YOU**  
In this way we would like to express our thanks and appreciation to the Chelsea Fire Department for the fast and efficient response to our call-for-help Saturday in the early hours of the morning; many thanks, also, to the Loren Fletcher family for their acts of kindness during the fire and to all our friends and relatives who have offered help in cleaning up.

Ed and Betty Green and children.

**THANK YOU**  
In this way we would like to express our thanks and appreciation to the Chelsea Fire Department for the fast and efficient response to our call-for-help Saturday in the early hours of the morning; many thanks, also, to the Loren Fletcher family for their acts of kindness during the fire and to all our friends and relatives who have offered help in cleaning up.

Ed and Betty Green and children.

**THANK YOU**  
In this way we would like to express our thanks and appreciation to the Chelsea Fire Department for the fast and efficient response to our call-for-help Saturday in the early hours of the morning; many thanks, also, to the Loren Fletcher family for their acts of kindness during the fire and to all our friends and relatives who have offered help in cleaning up.

Ed and Betty Green and children.

**THANK YOU**  
In this way we would like to express our thanks and appreciation to the Chelsea Fire Department for the fast and efficient response to our call-for-help Saturday in the early hours of the morning; many thanks, also, to the Loren Fletcher family for their acts of kindness during the fire and to all our friends and relatives who have offered help in cleaning up.

Ed and Betty Green and children.

## AGRICULTURE in Action

by M. L. Wood

### Farm Menace

Michigan farmers need help in meeting a major crop menace head-on. City people are involved too — as is anyone who likes green turf, lovely gardens, flowers, or vegetables. And who would welcome bare golf courses?

A horde of voracious Japanese Beetles is sweeping across the Ohio border, spilling into southern Michigan counties, solidly infesting some 80,000 acres of prime farming land in Monroe and Lenawee counties with a sprinkling of spot infestations to the north. If unchecked, all of lower Michigan will succumb to the pest which feeds on more than 275 host plants including major tree fruits.

In some areas, the beetles are so thick that housewives complain of them getting in their hair. Upwards of 100 of the half-inch beetles have been reported feasting on a single ripe peach.

Bad as losses are from direct mutilation by beetles (in some golf courses, the turf is loose, efficiently detached from below by the burrowing beetle grubs in larval state) — the greater economic damage is tied to possible quarantine to prevent further spread. "During the flight of the beetle, covering about a three-month period, no agricultural produce can be moved out of the quarantined area without certification," report officials of the Michigan Department of Agriculture. Certification procedures will vary with commodities, but in the case of grain, fumigation is included.

What's to be done? Mobilization of money and manpower can halt the march of Japanese Beetles into all of Michigan. Effective eradication is possible at a cost of around

\$480,000, or six dollars per treated acre.

In view of the many millions of potential direct damage, plus other millions lost in fumigation and other quarantine measures, \$480,000 is a minor sum.

It may require appropriations by a special session of the legislature, and in Michigan's currently highly-charged political atmosphere, anything can happen, including attempts to use the occasion to gain political advantage.

If statesmanship is applied by the Governor, his staff, and members of the legislature, this won't happen. The Japanese Beetle problem is too important for party politics. At stake is the future of Michigan agriculture, our second largest industry.

Telephone Your Club News  
To GR 5-3581

**Hunter Safety Course . . .**  
(Continued from page one)

Those passing written examinations at the conclusion of the four-hour course will be given Department of Conservation certificates signifying the fact that they have successfully completed the course.

The course is free and is open to all interested boys and girls 12 to 17 years of age.

Chelsea Rod and Gun club traditionally assists with the program in Chelsea.

Subjects for the four-hour schedule are as follows: nomenclature of firearms and ammunition; handling firearms, bows and arrows; behavior afield; and planning hunts.

## W. E. FARRELL SHEET METAL

INDUSTRIAL AND GENERAL SHEET METAL WORK  
115 WEST MIDDLE STREET—CHELSEA  
PHONE GR 9-2011

Phone GR 5-4141  
or  
GR 5-5141

## 24-HOUR AMBULANCE SERVICE

214 E. MIDDLE ST. CHELSEA

## BURGHARDT FUNERAL HOME

## -SPECIALS-

MORTON  
Salt . . . . . 3 boxes 31c  
25-OZ. JAR MOTT'S  
Apple Sauce . . 2 for 47c  
NO. 303 CAN SUTTONS BAY  
Pie Cherries . . 2 for 29c  
48-COUNT LIPTON'S  
Black Tea Bags . . . 47c  
ADMIRAL  
Margarine . . . 3 lbs. 47c

## KUSTERER'S FOOD MARKET

DIAL GR 9-3331 WE DELIVER

## Farmers! Produce MORE PROFIT with LESS LABOR By Using Farm Bureau's SPECIAL WHEAT STARTER FERTILIZER!



- ★ Contains mono-ammonium phosphate
- ★ Has a dry lubricant for uniform application.
- ★ Keeps grain drill cleaner, less destructive corrosion.
- ★ Produces winter hardiness by developing earlier and deeper root system.
- ★ Over 85% water soluble.

**YOUR COST:**  
Drill at rate of 200 lbs. per acre . . . . . \$ 9.15 per acre  
Drill at rate of 250 lbs. per acre . . . . . \$11.44 per acre  
Broadcast 300 lbs. per acre . . . . . \$13.71 per acre  
Broadcast 350 lbs. per acre . . . . . \$16.01 per acre

Order Seeds Now for Fall Planting.  
WHEAT - BARLEY - RYE

## FARMERS' SUPPLY CO.

PHONE GR 5-5511  
Across from NYC Depot Chelsea, Mich.

## NOW GOING ON! FORD '62 MODEL CLOSE-OUT TRADE-O-RAMA

**We need your car now!**  
You'll never do better on a trade-in than you will with us . . . right now! Our used car stocks are low, and we've got to build them up in time for the fall selling season. We need Florida, Plymouth, Chevrolet . . . all makes . . . and we need 'em fast! If your car is a late model, or an older one, we want it . . . and we'll pay to get it!

**Booming '62 Ford sales mean a better deal for you!**  
This is a big sale close-out on all our '62 Ford cars . . . and they've been selling like hot cream here at a kid's picnic! In fact, there are already over one million '62 Fords on the road today . . . and we're now working on our second million . . . so we can AFFORD to be extra generous when it comes to offering you a big allowance on your car!

**Low down payment! Low monthly payment!**  
Chance are your present car will more than cover the low down payment. That means you won't have to lay out a penny when you buy. And if you're wondering how low monthly payments can go, just look at this: we'll tailor the payments to fit your budget so well that in some cases you won't be spending any more per month than it costs you just to keep your old car running. But you'll have to act fast to get these savings. Come in today!

**YOUR TOP TRADING DAYS ON '62 FORDS ARE HERE... NOW!**

## PALMER MOTOR SALES, INC.

CHELSEA, MICHIGAN

## NOTICE of RE-ZONING HEARING

Notice is hereby given that the Village Council will conduct a

## PUBLIC HEARING

on the petition of Dana Corporation for the re-zoning of the premises hereinafter described from "A"-Agricultural, to "I"-Industrial, at the Council Room in the Chelsea Municipal Building on

## October 8th, 1962

at 8:00 o'clock p.m.

said premises being located north of the present Chelsea Products plant and east of the creek, formerly owned by George L. Staffan and described as follows:

Commencing at the north quarter corner of Section Twelve (12), Town Two (2) South, Range Three (3) East, Washtenaw County, Michigan; thence along the north line of said section and the center line of Sibley Road, south 86° 59' east 824.56 feet; thence south 0° 27' 30" east 243.63 feet to a point on the east bank of Letts Creek FOR A PLACE OF BEGINNING; thence south 0° 27' 30" east 659.14 feet; thence north 84° 32' 30" west 353.68 feet to a point on the east bank of the Creek; thence northerly and northeasterly along the east bank of the Creek through points described as follows: North 56° 51' east 15.73 feet, north 11° 51' east 51.05 feet, north 5° 21' east 67.79 feet, north 10° 39' east 100.18 feet, north 14° 27' east 115.90 feet, north 47° 39' east 97.60 feet, north 31° 56' east 171.14 feet, north 44° 58' east 64.37 feet, and north 62° 16' east 69.19 feet to the place of beginning, being a part of the northeast quarter of said Section 12, containing 3.51 acres of land more or less, Village of Chelsea, Washtenaw County, Michigan.

## VILLAGE OF CHELSEA

GEORGE L. WINANS, Village Clerk

## Sale! Sale!

on all 1962 MODELS

2 Dynamic 88 4-Dr. Sedans  
1 Dynamic 88 2-Dr. Hardtop  
1 Buick LeSabre 4-Dr. Hardtop

These cars are fully equipped — power steering, power brakes, automatic transmissions, etc.

1 F-85 4-Dr. Station Wagon

## DANIELS MOTOR SALES

Phones  
GR 9-6731 or GR 9-6391



## Community Calendar

Rummage Sale sponsored by Woman's Club of Chelsea, Oct. 26-27 at Sylvan Town Hall. adv.12

North Lake Extension club Wednesday, Sept. 26, at the home of Mrs. Reuben Lindemann. Meet at 9 a.m. to finish work on display for art hobby show.

Cub Scout Pack meeting tonight (Thursday) at 7 p.m. at the Junior High school.

Chelsea Child Study club Tuesday, Sept. 25, 8 p.m., at the home of Mrs. P. G. Schauble, Jr. Assistant hostesses: Mrs. James Borford and Mrs. Marion Dietle.

Beacon Light Extension club Wednesday, Sept. 26, 8 p.m., at the home of Mrs. Allen Alber.

VFW Auxiliary meeting Monday, Sept. 24, 8 p.m., at the K. of C. Hall, Sixth District meeting Sunday, Sept. 23, at Ann Arbor with Auxiliary No. 423 as hostess group. Those in need of transportation should contact Alida Juergens.

Chelsea Suburbanettes Extension club Thursday, Sept. 20, 8 p.m., at the home of Mrs. Earl Tison, Cavanaugh Lake.

PNG club regular meeting Thursday, Sept. 27, 7:30 p.m., at the home of Mrs. Pearl Herman, Half Moon Lake.

Merry Maids 4-H club, Saturday, Sept. 29, 9:30 a.m., in the Junior High Home Ec. room to organize for winter projects. If impossible to attend, contact Mrs. Roland Eder.

Girl Scout Neighborhood Association meeting Monday, Sept. 24, 8 p.m., in Home Ec. room at Junior High school.

Special meeting Olive Chapter No. 140, R.M., Thursday, Sept. 20, 7:30 p.m. Mark Master degree.

Washtenaw County Association, OES, Saturday, Sept. 22, at Dexter. Afternoon session at 2 p.m. Evening session at 7:30 p.m. Reservations for luncheon and dinner due Monday, Sept. 17. Call Mrs. Norman Schmidt.

Helping Hand Sewing Circle Tuesday Sept. 25, 1:30 p.m. at the home of Mrs. Watson Hart.

Ann Arbor Garden Club fall flower show, "County Fair," Friday, Sept. 21 at the Ann Arbor Community Center, 625 N. Main. Ample parking space. Open from 2 p.m. until 9 p.m. Entries will be accepted from the public between 8 and 10 a.m. Judging will start at 10:30 a.m. The show is open to the public without charge.

Salem Grove fall chicken supper Thursday, Oct. 4. Serving at 6:30 p.m., 6:15 p.m. and 7:00 p.m. Adults \$1.50; children under 12, \$1.00. For reservation of tickets call Nina Wahl, GR 5-5977. Adv.13

Swiss Steak Supper, Sept. 26. Serving starting at 5:30 p.m. Sharon EUB church (Rowes Corner). Tickets 1.50 and 75 cents. For reservations call GR 9-4802 or GR 8-4243.

Sylvan Extension club Thursday, Sept. 20, 1:30 p.m., at the home of Mrs. Doris Whitaker.

Cub Scout Pack meeting Thursday, Sept. 20, 7 p.m., at Junior High gymnasium.

South Sylvan Extension club meeting date changed to Sept. 20 because of lesson arriving late. Hostess: Mrs. Earl Heim.

A son, Paul James, Sunday, Sept. 2, at St. Joseph Mercy hospital, Ann Arbor, to Mr. and Mrs. James C. Brantley, 152 Shoreview Dr., Crooked Lake.

A son, George Martin, at St. Joseph Mercy Hospital, Ann Arbor, to Mr. and Mrs. Roland Eger, 2108 Brown Dr.

A daughter, Nanette Louise, Sunday, Sept. 2, at St. Joseph Mercy hospital, Ann Arbor, to Mr. and Mrs. Melvin Push, 509 Arthur St.

Mrs. Bernadine Hill and her mother, Mrs. H. D. Withersell, spent from Monday until Thursday at Ludington visiting the Leonard Withersells.

## DEATHS

**Edwin Pielemeier**  
Former Chelsea Resident  
Dies at Freelandville, Ind.

Edwin Pielemeier, formerly of Chelsea, died suddenly Saturday morning at his home in Freelandville, Ind. He was in the hardware business there.

Born at Freelandville, Feb. 26, 1895, he was a son of William S. and Alvina Ritterskamp Pielemeier. The family later moved to Chelsea.

He and his wife, the former Irma Strate, made their home on the Pielemeier farm here for some time following their marriage at Freelandville on April 22, 1917. They moved to Freelandville almost 40 years ago.

Mr. Pielemeier was a member of the Bethel Evangelical and Reformed United Church of Christ at Freelandville.

Survivors, in addition to the widow, are a son, William of Greenacres, Ind., two sisters, Miss Dorothea Pielemeier and Mrs. Bertha Stark of Chelsea; three brothers, John Pielemeier of Ann Arbor and Walter and Albert Pielemeier of Chelsea. Also surviving are two grandchildren, of Greenacres, Ind.

Funeral services and burial took place Monday at Freelandville.

**Mrs. Clara Simpson**  
Dies at Nursing Home  
Following Long Illness

Mrs. Clara Simpson of 1372 Sugar Loaf Lake, widow of Richard Simpson, died Sunday at Colonial Manor Nursing Home where she had been a patient since last May. She was 73 years old.

Born Jan. 8, 1889, in France, she was a daughter of Augustin and Gueme Cayta Boswell. She came to the United States at the age of 16 and on April 26, 1918, was married to Mr. Simpson and they made their home in Detroit. He died April 17, 1943. Since 1946, Mrs. Simpson had made her home in the Chelsea area.

She was a member of the Order of Eastern Star in Detroit.

Survivors of Mrs. Simpson are a son, Richard S. of Plymouth, and a grandson, Richard Wayne Simpson.

Funeral services were held at 1:30 p.m. yesterday at the Stefan Funeral Home, with the Rev. Jay Coulton of St. Andrew's Episcopal church, Livonia, officiating. Burial followed at Acacia Park cemetery, Detroit.

### Serviceman's Corner



ROBERT W. COLE

**Gregory Youth Assigned To Receive Training In Aircraft Maintenance**

Jackland AFB, Tex.—Airman Basic Robert W. Cole, son of Mr. and Mrs. Robert H. Cole of 164 North St., Gregory, Mich., is being reassigned to Amarillo AFB, Tex., for technical training as a United States Air Force aircraft maintenance specialist.

Airman Cole, who completed the first phase of his military training here, was selected for the specialized course on the basis of his interests and aptitudes.

The airman is a 1962 graduate of Stockbridge (Mich.) High school.

### Personal Notes

Anne-Marie Bury of North Lake spent the week-end with her grandparents, Mr. and Mrs. Floyd Rowe additional grandchildren who were dinner guests Sunday of Mr. and Mrs. Rowe are Mr. and Mrs. David Rowe and son, Danny, and Jeannene Lowene and Douglas Rowe.

Mr. and Mrs. Lynn Kern returned Sunday from a five-day trip to the Upper Peninsula. They missed Thursday's big storm here but encountered similar bad weather while they were in the vicinity of Petoskey.

Mrs. Floyd Rowe spent Tuesday with her sister, Miss Sarah Benter of Francisco. In the afternoon they visited a former neighbor, Mrs. Lillian Lingane, at her home in Jackson.

### Important Facts About Insurance

The Big Difference in car, home and business insurance is the continuing personal attention you get from an independent insurance agent.

✓ We help you choose the right protection.

✓ We recommend only strong, reliable companies known to pay claims quickly and fairly.

✓ We work on your side when you have a loss—follow through to see you get prompt, fair payment.

We are an independent insurance agency, ready to give you continuing personal attention—The Big Difference in insurance today



**A. D. MAYER**  
**AGENCY**

"Insurance for Every Need"  
115 Park St. Chelsea, Mich.  
Phone: Office 479-5061  
Res. GR 5-4201

## Ground-Breaking Planned in October for Red Cross Center

The proposed Washtenaw County Red Cross Operations Center, to be built on Packard Rd., Ann Arbor, came a bit closer to reality today with the announcement by the Red Cross Board of Directors that ground-breaking ceremonies are being planned for next month.

The County Chapter of Red Cross has been involved in a limited and separate Operations Center Fund Campaign for the past year, in keeping with the United Fund principle of not including in the United Campaigns funds for capital expenditures. Increased demand for Red Cross services, especially in the Blood Program, First Aid, Water Safety, and Service to Military, had rendered the present Nichols Arcade rented space inadequate.

Building Fund Drive Chairman Edward Adams, Jr., informed the Board that more than \$102,000 had been pledged by August from more than 550 contributors within the Washtenaw county communities participating in the county-wide project and that final plans and specifications have been ordered.

Contributions were started by

the regular Red Cross Volunteers with major business and industrial units, service clubs, University faculty, and civic minded citizens joining in.

The new center, with larger area allowing greater volunteer participation in the growing Red Cross programs, will be constructed on the Red Cross property adjacent to Buhr Park on Packard Rd., between Ann Arbor and Ypsilanti. The planning for the new center was started in 1956 by a committee of Red Cross Volunteers and community representatives. Surveys of needs and population trends were made and the generalized requirements were laid out.

According to plans, the center, which would consolidate the Ann Arbor and Ypsilanti offices, will be constructed of concrete block with movable partitions forming the various offices and work rooms. Included in the one-floor structure is a multi-purpose room which can be subdivided into three classrooms or used as is for Blood Clinics. The design calls for only a half-basement which would

be used as a workshop and for storage of essential supplies and disaster equipment. Ample parking will be available on land owned by the Red Cross. The site was acquired with funds from bequests and special gifts.

Miss Erma Graber of Detroit, spent the week-end here with her mother, Mrs. L. F. Vogel. Saturday afternoon callers at the Vogel home were another daughter and her husband, Dr. and Mrs. H. C. Dunstone of Fort Wayne, Ind.

**Sylvan Township Democrats Open Headquarters Office**  
Sylvan Township Democrats Headquarters has established office on the second floor of building at 120 South Main above the Recreation Tavern. Dennis Tallant, the township Democratic chairman, announced that the office is open daily except Sunday, from 8 a.m. to 9 p.m.

Listen to that "all's-well" pun

Your car's engine will "pun" with contentment after our parts change the oil and give a good lubrication.

Sweet music to your ears is the purr of your engine, sure promise of power and performance after our servicemen drain the sludge and clean the crankcase of your car with high quality PURE oil.

**PURE OIL PRODUCTS**

**HANKERD'S SERVICE**

Tires — Batteries — Tune-Up — Brake Service — Wheel Alignment

PHONE 479-3541 CHELSEA, MICH.

## PREFINISHED PANELLING

SIZE: 4 ft. x 8 ft. sheets 1/4 inch thick.

PATTERN: Random-spaced v-grooves give the appearance of true panelling. (A half-groove at each edge permits complete concealment of joints.)

FINISH: Durable, soft-lustre factory finish . . . on GENUINE wood.

PRICE: You won't find better buys anywhere!

MAHOGANY	\$ 4.66
CHERRY	\$13.92
BIRCH	\$ 8.88
WALNUT	\$14.88
BLOND CATIBO	\$ 7.95
OAK	\$ 8.47

... A Dollar's Worth of Materials  
Adds Three Dollars to the Value of Your Home!

**Chelsea LUMBER CO.**

DIAL GR 5-3391

SEPTEMBER

**Gambles**  
The Friendly Store

**DISCOUNT SALE!**  
HURRY! LAST 3 DAYS!

**Coronado Custom Automatic**

**NEW 1963 MODELS!**  
REGULARLY \$229.95  
**\$199.81**

\$2.75 PER WEEK — PAYABLE MONTHLY

Just load the washer, push a button and the "Custom Deluxe" does the rest! 2 speeds, 3 cycles, 3 water temperatures, 5 fabric selections. Custom treatment for all your clothes. Automatic bleach injection, turbo-lift filter, 4-way washing action. Porcelain tub and top.

**ELECTRIC DRYER**  
Regularly 159.95  
**\$138.81**

**PRICE SLASHED \$41.07 ON CORONADO 23 NAVIGATOR**  
REGULARLY \$189.95  
**\$148.88**

Smartly styled-console features hand-wired circuits, aluminized picture tube, tinted safety glass! Out front sound. Wood grained cabinet.

**MAHOGANY FINISH**  
Lined Oak or Walnut only \$10.00 more

**WHITE PAINT - Sensational Value!**  
Never before at a price so low. Hurry, stock up now and save. Gal. can **\$1.88**

**VARCON PERMANENT ANTI-FREEZE**  
Early Season Special! Non-evaporating, lasts all winter. Anti-rust. Gal. can **\$1.36**

**'Can't-Miss' Mouse Trap - Save over 50%**  
There's still no better mouse trap! 4-way release, up, down, right or left. Regularly 9 1/2c each. NOW **4 1/2c**

**SEALED BEAM HEAD LAMPS - GE**  
Drive with greater safety with GE's new lower beam "Spotlight." 6V or 12 V. Fits all cars, including 1962's. Regularly \$1.79 **88c**

**MASKING TAPE - Regularly 98c**  
Extra wide, 1 1/2" x 75 ft. Use for painting and weatherstripping **47c**

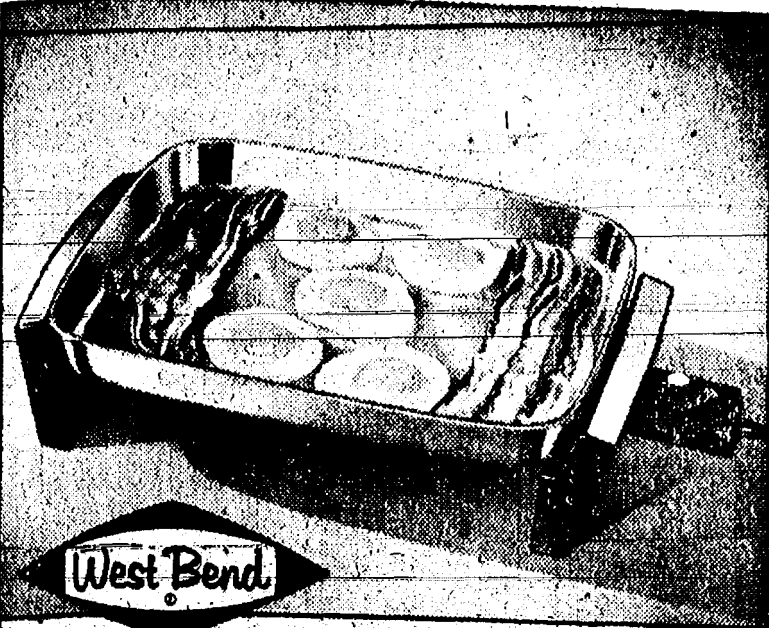
**PARCEL POST TWINE - Mfg's. Retail 39c**  
500 feet! Strong 8-ply cord. Save more than 50% **18c**

**CANISTER SET, 4-Pc. - Mfg's. Retail \$2.59**  
Assorted colors! Plastic, handsomely decorated. Cannot rust **\$1.28**

**GAMBLES - FAMOUS FOR DISCOUNT SAVINGS**

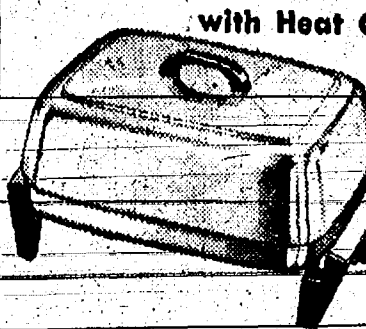


## ELECTRICAL HOUSEWARES FOR FALL



### Fries! Grills! Roasts! Serves! VERSATILE BUFFET-CHEF

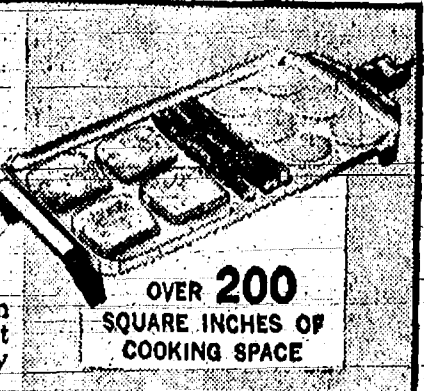
Brand-new from West Bend... four appliances in one. With the cover on, you can prepare a large roast, ham or fowl. Cover off, it's a king-size skillet and griddle with over 160 square inches of grilling area. Extra-thick cast aluminum. Immersible, 17 1/2" long, 11 1/2" wide.



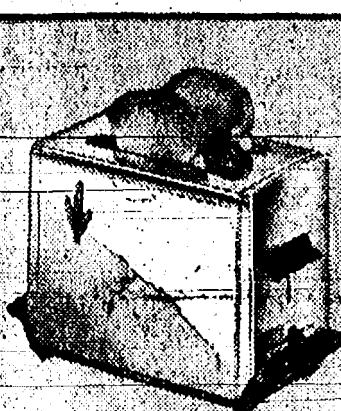
### Grill! Fry! Serve! FAMILY-SIZE GRIDDLE 'N' SERVER

\$19.95

Extra-thick cast aluminum grill, with automatic heat control. Immersible for easy cleaning.



OVER 200  
SQUARE INCHES OF  
COOKING SPACE



### for better toast RADIANT CONTROL POP-UP TOASTER

\$12.99

Radiant control for evenly browned toast with any kind of bread. Compactly styled in chrome and black.



### for delicious coffee AUTOMATIC PARTY PERK

\$18.99

West Bend's Party Perk makes up to 30 cups of tasty coffee, easy as making 8 cups. Polished aluminum.



### coffee for a couple "2 to 5 Cupper" AUTOMATIC PERK

\$7.99

Two to five cups of delicious coffee without waste! Fully automatic. Polished aluminum, brown trim.



### for family breakfasts RADIANT CONTROL 4-SLICE TOASTER

\$18.99

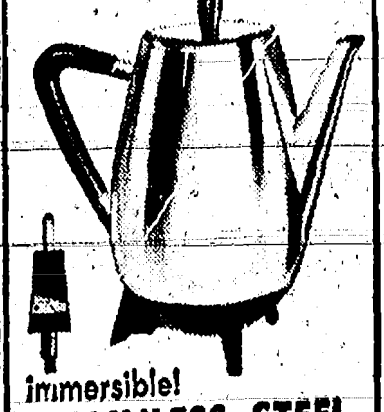
West Bend's radiant thermostat control responds to surface temperature of bread, for better toast.



### 9-CUP PERK

\$7.99

Graceful new styling — bright aluminum with copper-colored cover. Fully automatic. No gadgets to adjust.



### immersible STAINLESS STEEL 10-CUP PERK

\$19.95

Grace your table with modern beauty, striking design by West Bend.

**MERKEL BROS.**

## Needlework Guild Tells Urgent Need For New Garments

The Chelsea Branch of the Needlework Guild of America announces this year's drive for members the week of Oct. 1 to 5. This is national membership week for more than 400 branches of the "Original Wash and Wear" charity.

According to the announcement by Mrs. Thomas Masterson, president of the Chelsea branch, the NGA, which gives new clothing to the needy, is as modern as a missile and just about as direct. It follows the reasonable assumption that a person in need of clothes requires two garments—one to wash and one to wear. To that end, since its organization 77 years ago, the only membership requirement is the contribution of two or more new articles of clothing or household linens (or money to purchase needed items).

Mrs. Masterson said that all gifts to the Needlework Guild will be displayed at the annual ingathering to be held Thursday, Oct. 4, from 2 to 4 p.m. at the Congregational church.

The articles will be given to Chelsea Social Service for distribution where most needed.

Mrs. Louis Ramp, director of Chelsea Social Service has compiled the following list of articles which will be most needed:

Boys—sizes 4 through 12: "jeans," particularly lined ones, corduroys, pajamas, sweaters, socks, caps and mittens. All sizes are needed. Underwear: shorts, shirts and "T-shirts" most needed. Sizes will be announced next week.

Girls—sizes 4 through 14: pajamas, sweaters, mittens and hosiery, socks, dresses, slips and "jeans." Underwear: most needed sizes to be announced. Sheets and pillow cases are very much needed.

Money donations are also "gratefully received" and are used to purchase shoes, boots and warm clothing for which there may be a particular need.

For information about the Chelsea Needlework Branch, area people may contact Mrs. Winifred Coffron, who is first vice-president in charge of membership.

**VISITS BARBER AT LAST**  
Rantoul, Kan. — John P. Forrer, 58, climbed into a barber chair, telling the barber this was the first time he had been in a barber's chair.

Forrer said his father, 83, had cut his hair since he was a lad. He explained that his father was awaiting spectacles following a cataract operation and he needed a hair cut.

Can anybody remember the old days, when a schoolboy thought he was doing pretty well if he carried an apple to school for lunch?

The Rev. Rest, who is to speak

at the morning service Sunday is a native of Iowa. He studied at Elmhurst College in Illinois and at Eden Theological Seminary near St. Louis, Mo. He served parishes in Texas, Evansville, Ind., and New Orleans, La., before going to Mount Clemens.

He has held various offices in the United Church, serving several terms as president of the Texas Synod, vice-president of the Board of International Missions of the Evangelical and Reformed Church and more recently as a member of the policy committee of the Committee on International Missions of the United Church. In 1957 he was sent to Japan to visit missionary projects of the denomination in that country.

The ministry, and has a son who will enter Union Theological Seminary this month. One brother, Karl Rest, was formerly pastor of Emanuel church in Manchester for 10 years.

The Rev. Hastings has served abroad in Puerto Rico and in Germany. From 1944 to 1950 he was pastor of the Union Church of San Juan, Puerto Rico and was also active in educational projects there. For five years he directed resettlement work for the World Council of Churches in Germany, part of which time he lived in that country. He had also held pastorates in Ithaca, N. Y., and Middlebury, Vt., before serving abroad.

**EQUAL JOBS**  
An agency set up by President Kennedy to promote more equal job opportunities for Negroes is due for policy changes.

Theodore Kheel, New York labor arbitrator, has reportedly recommended that while Kennedy's committee deserves a cheer for accomplishment so far it still can do a great deal more.

The University of Michigan law library has the largest collection on law west of the Alleghenies and is one of the foremost in the world.

**FREE SPEECH**, according to the Supreme Court, does not give a person the right to shout "fire," crowded theatre.

**CHECK YOUR BRAKE LININGS**

To avoid accident, sometimes it's necessary to "stop on a dime!" This, you can't do, when brake linings are dangerously worn. Better play safe, and let us check yours NOW. We'll re-line your brakes, if need be, at modest cost.

**Balmer's Brake Service**  
24-HOUR WRECKER SERVICE  
PHONE GR 5-5131 140 W. MIDDLE ST.

**Gas-dry your wash for less than 2¢ a load**  
**Free Installation**  
See The Latest Models  
Displayed At

**MEABON'S**  
TV, FURNITURE & APPLIANCE  
1170 S. M-92 PHONE GR 5-5191

# THE CHELSEA STANDARD

SECTION TWO

CHELSEA, MICHIGAN, THURSDAY, SEPTEMBER 20, 1962

PAGES 7-14



**MICHIGAN CROP SHIPPERS BEANS** — 70,000 pounds of No. 1 Michigan cranberry beans were loaded into a railroad box car, dedicated and shipped from Vetsburg Sept. 6 by Michigan CROP. Hail will receive 40,000 pounds, France 5,000 pounds and Italy 25,000 pounds. The Rev. J. J. Cook looks on as the Rev. Walter Westrom makes the presentation to Russell M. Hartzler, Michigan CROP director. Westrom is CROP chairman of Montcalm county and Cook is chairman of Gratiot county.

## Bethel Church Plans Annual Mission Festival Sunday

The annual Mission Festival of Bethel United Church of Christ in Freedom township, will be held Sunday Sept. 23, with services at 10 a.m. and 8 p.m.

Featured speakers will be the Rev. Heinrich F. J. Rest of Mount Clemens at the morning service and the Rev. William F. Hastings of Hudson for the evening program.

Bethel church has been holding annual mission festivals for more than a century; the Rev. Friedrich Schmid, a German missionary who organized Bethel church in 1840, and more than 20 other churches in this area in the years following, invited area churches to share in such a festival in 1850.

Bethel church's interest in missions has added impetus since a daughter of the congregation, the former Rhea Menzel and her husband, the Rev. Raymond Whitehead, are serving as missionaries in Hong Kong.

The Rev. Rest, who is to speak

at the morning service Sunday is a native of Iowa. He studied at Elmhurst College in Illinois and at Eden Theological Seminary near St. Louis, Mo. He served parishes in Texas, Evansville, Ind., and New Orleans, La., before going to Mount Clemens.

He has held various offices in the United Church, serving several terms as president of the Texas Synod, vice-president of the Board of International Missions of the Evangelical and Reformed Church and more recently as a member of the policy committee of the Committee on International Missions of the United Church. In 1957 he was sent to Japan to visit missionary projects of the denomination in that country.

The ministry, and has a son who will enter Union Theological Seminary this month. One brother, Karl Rest, was formerly pastor of Emanuel church in Manchester for 10 years.

The Rev. Hastings has served abroad in Puerto Rico and in Germany. From 1944 to 1950 he was pastor of the Union Church of San Juan, Puerto Rico and was also active in educational projects there. For five years he directed resettlement work for the World Council of Churches in Germany, part of which time he lived in that country. He had also held pastorates in Ithaca, N. Y., and Middlebury, Vt., before serving abroad.

**EQUAL JOBS**  
An agency set up by President Kennedy to promote more equal job opportunities for Negroes is due for policy changes.

Theodore Kheel, New York labor arbitrator, has reportedly recommended that while Kennedy's committee deserves a cheer for accomplishment so far it still can do a great deal more.

The University of Michigan law library has the largest collection on law west of the Alleghenies and is one of the foremost in the world.

**FREE SPEECH**, according to the Supreme Court, does not give a person the right to shout "fire," crowded theatre.

**CHECK YOUR BRAKE LININGS**

To avoid accident, sometimes it's necessary to "stop on a dime!" This, you can't do, when brake linings are dangerously worn. Better play safe, and let us check yours NOW. We'll re-line your brakes, if need be, at modest cost.

**Balmer's Brake Service**  
24-HOUR WRECKER SERVICE  
PHONE GR 5-5131 140 W. MIDDLE ST.

**Gas-dry your wash for less than 2¢ a load**  
**Free Installation**  
See The Latest Models  
Displayed At

**MEABON'S**  
TV, FURNITURE & APPLIANCE  
1170 S. M-92 PHONE GR 5-5191

## Counselor Named for High School

Nell Celley, who received his master of arts degree in guidance and counseling at the close of the summer session at the University of Michigan, is the new full-time counselor in Chelsea schools. He replaces George Bergman who has accepted a position as director of guidance at Nicolet High school, Milwaukee, Wis.

Celley, a native of northern Minnesota, was chosen an All-American hockey player in 1951, the year he graduated from the University of Michigan. He served as ice hockey coach at the University of Denver, Colo., from 1951 until 1956.

From June 1961 until he came to Chelsea, he was adult probation officer with the Washtenaw County Circuit Court; for three years prior to that he had been at Pontiac as juvenile probation officer for the Oakland county Juvenile Court.

His work in Chelsea schools includes acting with High School Principal Charles Lane as advisor to the Student Council.

Celley is married and the father of three children, ages one, eight and nine. Mrs. Celley and the children are living in the family home at Birmingham until arrangements for disposal of the property can be made.

## Den Mothers Needed for Cub Scouts

Plans for tonight's Cub Scout Pack meeting of Pack 125 were made at a meeting of den mothers held at 7:30 p.m. Tuesday, Sept. 11, at the Junior High school.

Principal activity of tonight's meeting, which begins at 7 p.m., will be a Webelos graduation ceremony under the direction of the boys' leader, Mrs. A. Eersten. Tentative plans for Pack meetings for the entire year of Cub Scouting were discussed; the October meeting has been designated "Parents' Night."

Since there are a considerable number of boys in Chelsea who passed their eighth birthday during the summer, thus becoming eligible to join the Cub Scouts, more adult leaders will be needed if these boys are to be able to enjoy the privilege. The number of boys who may become Cub Scouts will depend upon the interest shown by the parents.

Dens of last year are still active but new den mothers must be secured for the new boys who will wish to join.

**Dorothy Brown Enrolls In Nursing School**

Dorothy Gladys Brown, has been accepted by the Maumee Valley Hospital School of Nursing as a member of the class which entered the school on Sept. 4.

She is the daughter of Mr. and Mrs. Albert H. Brown of 20098 1-94 and is a graduate of Chelsea High school.

The Maumee Valley Hospital School of Nursing is approved by the Ohio Board of Nursing Education and Nurse Registration and is fully accredited by the National League for Nursing.

Free speech, according to the Supreme Court, does not give a person the right to shout "fire," crowded theatre.

**CHECK YOUR BRAKE LININGS**

To avoid accident, sometimes it's necessary to "stop on a dime!" This, you can't do, when brake linings are dangerously worn. Better play safe, and let us check yours NOW. We'll re-line your brakes, if need be, at modest cost.

**Balmer's Brake Service**  
24-HOUR WRECKER SERVICE  
PHONE GR 5-5131 140 W. MIDDLE ST.

**Gas-dry your wash for less than 2¢ a load**  
**Free Installation**  
See The Latest Models  
Displayed At

**MEABON'S**  
TV, FURNITURE & APPLIANCE  
1170 S. M-92 PHONE GR 5-5191

**Early Discovery Prevents Disaster In Home Fire**

The Chelsea Fire Department was called out before 4 a.m. Saturday to the home of Mr. and Mrs. Edmund Green, 128 Jackson st., next to Farmers' Supply Co., when Mrs. Green was awakened and found the bedroom at the house was on fire.

She said sparks from the blaze, which started on a dresser near the bed, awakened her as they fell on her arms.

Mrs. Green roused her husband and two of the couple's sons and called the firemen.

Damage from fire was confined to the bedroom but the entire house suffered some smoke damage.

The dresser and its contents, the wall and window casing, curtains and the bed and mattress were burned.

## Senior High MYF Officers Installed Sunday Morning

Senior High Methodist Youth Fellowship officers for 1962-63 were installed at the 10 o'clock worship service Sunday morning at the Methodist church, with the Rev. S. D. Kinde officiating.

Presented by Mrs. Raymond Schairer, superintendent of the youth division of the church school, the officers installed are as follows: James Cameron, president; David Adams, vice-president; Beverly Boyer, recording secretary; Sharon Maurer, corresponding secretary; Barbara Bernath, treasurer; and the following chairmen—Grace Kushnau, citizenship; Lois Henburn, faith; Tom Johnson, fellowship; Mike Tarasow, outreach; Mike Scholten, witness; Steven Allen, publicity; and Jennifer Bolton and Christine Tarasow, representatives to the Washtenaw sub-district.

**Early Discovery Prevents Disaster In Home Fire**

The Chelsea Fire Department was called out before 4 a.m. Saturday to the home of Mr. and Mrs. Edmund Green, 128 Jackson st., next to Farmers' Supply Co., when Mrs. Green was awakened and found the bedroom at the house was on fire.

She said sparks from the blaze, which started on a dresser near the bed, awakened her as they fell on her arms.

Mrs. Green roused her husband and two of the couple's sons and called the firemen.

Damage from fire was confined to the bedroom but the entire house suffered some smoke damage.

The dresser and its contents, the wall and window casing, curtains and the bed and mattress were burned.

**Den Mothers Needed for Cub Scouts**

Plans for tonight's Cub Scout Pack meeting of Pack 125 were made at a meeting of den mothers held at 7:30 p.m. Tuesday, Sept. 11, at the Junior High school.

Principal activity of tonight's meeting, which begins at 7 p.m., will be a Webelos graduation ceremony under the direction of the boys' leader, Mrs. A. Eersten. Tentative plans for Pack meetings for the entire year of Cub Scouting were discussed; the October meeting has been designated "Parents' Night."

Since there are a considerable number of boys in Chelsea who passed their eighth birthday during the summer, thus becoming eligible to join the Cub Scouts, more adult leaders will be needed if these boys are to be able to enjoy the privilege. The number of boys who may become Cub Scouts will depend upon the interest shown by the parents.

Dens of last year are still active but new den mothers must be secured for the new boys who will wish to join.

**Dorothy Brown Enrolls In Nursing School**

Dorothy Gladys Brown, has been accepted by the Maumee Valley Hospital School of Nursing as a member of the class which entered the school on Sept. 4.

She is the daughter of Mr. and Mrs. Albert H. Brown of 20098 1-94 and is a graduate of Chelsea High school.

The Maumee Valley Hospital School of Nursing is approved by the Ohio Board of Nursing Education and Nurse Registration and is fully accredited by the National League for Nursing.

Free speech, according to the Supreme Court, does not give a person the right to shout "fire," crowded theatre.

**CHECK YOUR BRAKE LININGS**

To avoid accident, sometimes it's necessary to "stop on a dime!" This, you can't do, when brake linings are dangerously worn. Better play safe, and let us check yours NOW. We'll re-line your brakes, if need be, at modest cost.

**Balmer's Brake Service**  
24-HOUR WRECKER SERVICE  
PHONE GR 5-5131 140 W. MIDDLE ST.

**Gas-dry your wash for less than 2¢ a load**  
**Free Installation**  
See The Latest Models  
Displayed At

**MEABON'S**  
TV, FURNITURE & APPLIANCE  
1170 S. M-92 PHONE GR 5-5191

**Early Discovery Prevents Disaster In Home Fire**

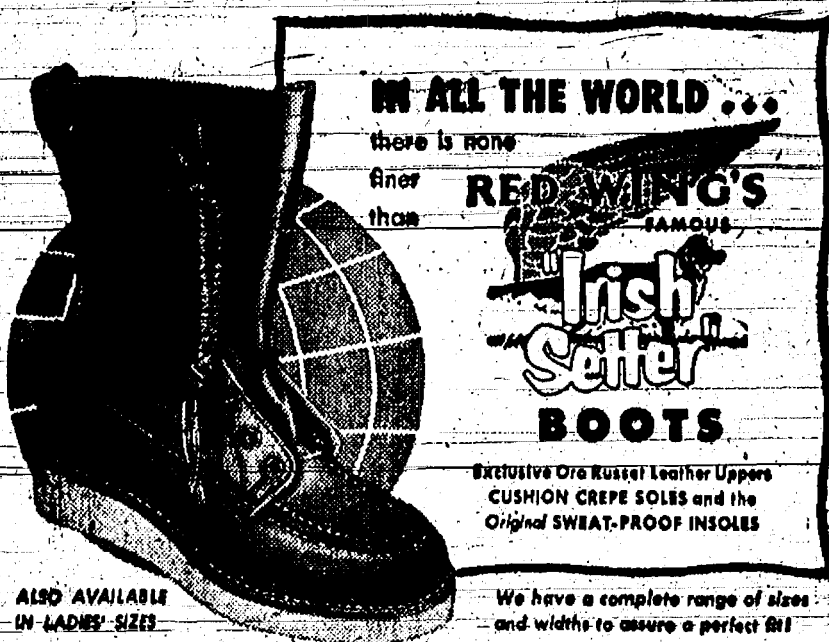
The Chelsea Fire Department was called out before 4 a.m. Saturday to the home of Mr. and Mrs. Edmund Green, 128 Jackson st., next to Farmers' Supply Co., when Mrs. Green was awakened and found the bedroom at the house was on fire.

She said sparks from the blaze, which started on a dresser near the bed, awakened her as they fell on her arms.

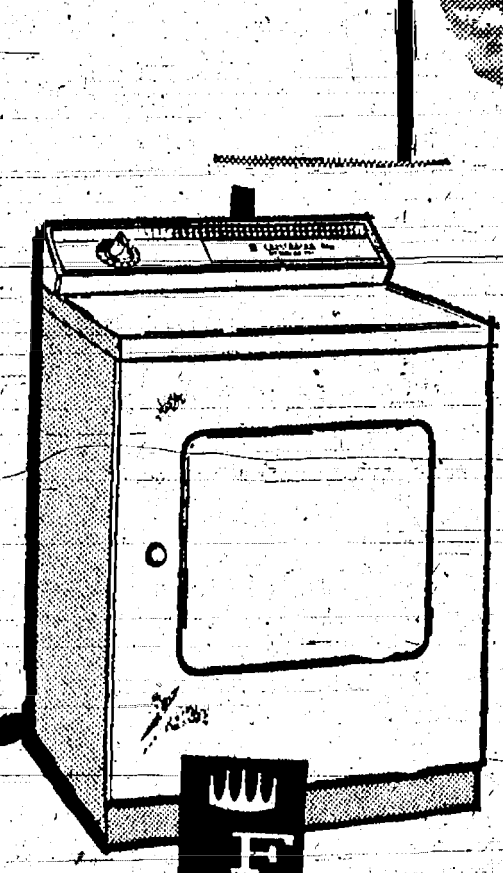
Mrs. Green roused her husband and two of the couple's sons and called the firemen.

Damage from fire was confined to the bedroom but the entire house suffered some smoke damage.

The dresser and its contents, the wall and window casing, curtains and the bed and mattress were burned.



## Foster's Men's Wear



- ★ Exclusive Flowing Heat — dries freeze-fresh, even safer than sunshine.
- ★ Set just one dial to dry any fabric — beautifully!
- ★ No-Stoop lint screen right on door for easy cleaning!

**Gas-dry your wash for less than 2¢ a load**  
**Free Installation**  
See The Latest Models  
Displayed At

**MEABON'S**  
TV, FURNITURE & APPLIANCE  
1170 S. M-92 PHONE GR 5-5191

**Early Discovery Prevents Disaster In Home Fire**

The Chelsea Fire Department was called out before 4 a.m. Saturday to the home of Mr. and Mrs. Edmund Green, 128 Jackson st., next to Farmers' Supply Co., when Mrs. Green was awakened and found the bedroom at the house was on fire.

She said sparks from the blaze, which started on a dresser near the bed, awakened her as they fell on her arms.

Mrs. Green roused her husband and two of the couple's sons and called the firemen.





## BOWLING NEWS



## Sports Corner

## Summer Will End Next Sunday

Ann Arbor — Sunday, Sept. 23 marks the official close of summer. With the start of autumn—officially at 7:35 a.m. Sunday—nights will steadily grow longer, reminding the University of Michigan astronomer Hazel M. Losh.

"Since June 21, the sun has been moving southward, and on this day of the equinox (Sept. 23) it will cross the equator," Professor Losh explains.

"This is the day that the sun will rise and set at the east and west points of the horizon, and the day and night will be said to be of equal length."

But this is not strictly true, the U-M astronomer points out. As the sunlight enters the earth's atmosphere it passes through a dense region. The result is that the light is bent or it appears to be "lifted," making the sun visible before it actually comes above the horizon and after it sets.

Because of this atmospheric effect, the sun will appear to be visible for several minutes before and after the fact that it will be above and below the horizon for equal lengths of time, Professor Losh notes.

The day and night will appear equal on Sept. 23, and from then on the day will grow shorter.

## ONE-MINUTE SPORTS QUIZ

1. What teams played the final American Zone Davis Cup match?
2. What team won?
3. Who won the Griffith-Moyer fight?
4. What Major League baseball team tours Japan this fall?
5. Where was the first NFL football doubleheader played recently?

(Answers on page 11)

**TIGHT DRUG CONTROLS**  
A House committee has begun hearings on a bill proposing strict controls over the manufacture and dispensing of drugs and medicines.  
The bill provides for controlling the manufacturing, testing, packaging, labeling and marketing of drugs.  
The measure would also require premarketing evidence that the product is effective and would hold the maker responsible for all claims he makes.  
**SUBSCRIBE TODAY TO THE CHELSEA STANDARD**

### Nite Owl League

Standings as of Sept. 17

	W	L
Freysinger Plastering	7	1
Chelsea Drug	6	2
Chelsea State Bank	6	3
Foster's Men's Wear	5	3
Detting's Marathon	5	3
Chelsea Lumber	3	5
Waterloo Garage	3	5
Turners Electric	2	6
Team No. 9	0	4
Team No. 10	0	4

500 Series: M. Packard, 580; P. Grabowski, 527; G. Winans, 523; R. Foster, 513.

200 games: O. Hansen, 202; M. Packard, 201.

### Chelsea Suburban League

	W	L
Colonial Manor	7	1
A. D. Mayer Agency	7	1
Detting's Marathon	6	2
Prentice Trucking	6	3
Waterloo Garage	4 1/2	3 1/2
Balmer's Brake Service	4	4
Knoll Ashland	3 1/2	3 1/2
Patty Ann Shoppe	3	5
Chelsea Restaurant	3	5
The Pub	2	6
GE Cals	2	6

Gimney Standard Serv. 1 7

High team 3 games: Colonial Manor, 2,087.

High team 1 game: Colonial Manor, 741.

High individual 8 games: Louise Weishans, 492; R. West, 489.

High individual 1 game: L. Weishans, 206.

Splits picked up: R. Riethmiller, 3-10; L. Weishans, 5-10, 4-7, 10; Jo Strait, 4-7-0; R. West, 2-7; M. Breitenwischer, 5-7.

### Senior House League

Standings as of Sept. 10

	W	L
Merkel's A-1's	4	0
Chelsea Mfg. No. 1	3	1
Chelsea Grinding Co.	3	1
Spaulding Chevrolet	2	2
Schneider's Grocery	2	2
Sylvan Center	2	2
Stop & Shop	2	2
Wonder Bar	1	3
Chelsea Products 1	1	3
Wolverine Tavern	0	4

500 series: O. Johnson, 555; L. Keizer, 549; G. Burnett, 540; E. Miller, 543; W. Worden, 528; H. Burnett, 527; R. Eder, 524; R. Liebeck, 523; K. R. McManis, 522; R. Korn, 521; D. Alber, 520; G. West, 518; C. White, 518; D. Hatley, 514; E. Merkel, 512; R. Worden, 508; L. Eder, 504; O. Kruse, 503.

200 games: O. Johnson, 241; R. Liebeck, 228; K. R. McManis, 221; E. Miller, 213; V. Hatley, 211; G. Burnett, 211; C. White, 210; D. Hatley, 203; L. Keizer, 202; G. West, 201; R. Worden, 200.

### Boys Junior League

Standings as of Sept. 13

	W	L
Team No. 1	4	0
Team No. 4	4	0
Team No. 6	4	0
Team No. 7	4	0
Team No. 2	0	4
Team No. 5	0	4
Team No. 3	0	4

450 series: N. Packard, 453; D. White, 445; G. Beeman, 435; B. Marsh, 431; L. Fahrner, 403; N. Green, 402.

150 Games: N. Packard 171-163; G. White, 166; G. Beeman, 163.

### Junior House League

Standings as of Sept. 13

	W	L
The Pub	8	0
Gambles	6	2
Farrell Sheet Metal	5	3
Meabon's	5	3
Palmer's T-Birds	4	4
Jiffy Mixers	3	5
Altea Beer	3	5
Slocum Construction	3	5
Lane St. Gang	3	5
Anderson's	3	5
Wolverine Tavern	3	5
Chelsea Spring	2	6

200 games: R. Worden, 254; R. Huston, 235; N. Fahrner, 221; R. Schultz, 207; M. Oesterle, 206; W. Farrell, 205; S. Slane, 204; C. Harold, 203; J. Dault, 202; C. Lake, 200.

500 series: Worden, 601.

500 series: N. Fahrner, 582; J. Dault, 561; R. Huston, 557; S. Slane, 550; C. Harold, 555; R. Ringe, Dr., 543; G. Dresch, 539; C. Lake, 536; R. Schultz, 536; T. Tibb, 535; E. Harook, 532; R. Stinehelfer, 527; M. Oesterle, 525; M. Oesterle, 525; R. Feldkamp, 524; E. Johnston, 521; C. Popovich, 517; J. Gaken, 512; D. Welshans, 512; C. W. Lake, 510; J. Eisemann, 510; R. Grossman, 505; R. Devine, 503.

### Chelsea Lanes Mixed League

Standings as of Sept. 14

	W	L
Jack Pots	7	1
Hankers	7	1
Block-Busters	6	2
Jells	5	3
Sams Barber Shop	5	3
Kings and Queens	4	4
Sanderson-Feldkamp	4	4
Alexander-Miles	4	4
Ups and Downs	3	5
Poye-Budreau	1	7
Heydlauff's GE	1	7

Mens 475 Series and Over: M. Poertner, 579; L. Mayne, 570; C. Clark, 510; L. Kusterer, 510; J. Turner, 502; E. Dickelman, 490; M. Packard, 490; B. Fitzsimmons, 490; B. Feldkamp, 487; J. Eisemann, 478.

Mens 175 and Over: C. Clark, 209-182; M. Poertner, 208-194-177; L. Mayne, 204-189-177; B. Fitzsimmons, 191; L. Kusterer, 185-170; J. Turner, 182; D. Miles, 181; G. Schwartz, 177; J. Harmon, 173; C. Sanderson, 171.

Womens 425 Series and Over: P. Poertner, 435; N. Eisemann, 471; A. Turner, 460; P. Fitzsimmons, 427; L. Kusterer, 426.

Womens 150 Series and Over: A. Turner, 187; W. Miles, 185; N. Eisemann, 176; P. Poertner, 172-163-160; E. Mayne, 169-160; P. Alber, 168; P. Fitzsimmons, 162; L. Kusterer, 160; B. Koch, 152; J. Rabbitt, 150.

### Women's League

Standings as of Sept. 12

	W	L
Blatz Beer	4	0
Chelsea Milling	4	0
Chelsea Grinding	3	1
Modern Beauty Shop	3	1
Wilson Dairy	3	1
Chelsea Lanes	1	3
Foster's Men's Wear	1	3
Hanks Refrigeration	1	3
Hankers Pure Oil	0	4
Jiffy Mixes	0	4

200 Games: P. Poertner, 204; R. Hummel, 201.

500 Series: P. Poertner, 540; M. Powell, 540.

475 Series: N. Eisemann, 488; R. Johnson, 478.

450 Series: A. Turner 457; R. Winchester, 450.

425 Series: R. Hummel 449; R. Harook, 449; H. Morgan, 445; V.

THE PIRATES WHO CAPTURED THE NATIONAL LEAGUE RACE IN THEIR 1960 ACE VERN LAW RECOVERED FROM A RACE MISSED, ARE DOING JUST THAT...

VERN WAS BEATEN DOWN BY A TRUCK IN 1961 AFTER WINNING 106 RACES, FINISHING 1960 WORLD CHAMP...



LAW HAS BEEN FIRED WITH HIS OLIVE OIL IN ONE OF THE SEASONS SHEET EFFORTS...

VERN WAS BEATEN DOWN BY A TRUCK IN 1961 AFTER WINNING 106 RACES, FINISHING 1960 WORLD CHAMP...

## CLUB NEWS

### ROGERS CORNERS HERDSMAN

The Rogers Corners Herdsman 4-H club held the final meeting for the summer project year on Thursday, Sept. 13 at Lima Town Hall. Project reports were handed out to all members. These reports were to have been handed in to any leader by Sunday.

Saturday morning all of the members of the club were to have brought pitchforks and rakes to the Chelsea Fairgrounds. There they were going to assist the Fair Board and community in the annual clean-up after the Fair.

Robert Musolf, who was the leader who assisted with the model business meeting demonstration, recognized the participants. The medals for winning first place at State Show were handed out to those who received medals and awards between the campaign funds of the local congressional candidate, Thomas E. Payne, of Ann Arbor, and the National congressional campaign fund.

The chairman in charge of general ticket sales are Mrs. Frederick Smith and Mrs. Gerald Pava, both of Ann Arbor. They will also head up ticket sales in Washtenaw county.

The club will hold a hayride on Saturday, Sept. 22 at 7:30 at Ken Lindow's. Each member may bring a guest. Older and doughnuts will be served.

Bev Windell, reporter.

Michigan had the lowest traffic death rate among the Great Lakes states during the first half of 1962—14.5 per 100,000 population. Illinois was second with 14.8, while Ohio had 17 deaths, Wisconsin 17.9 and Indiana 21.7 per 100,000 population.

### Women's Inter-City

Standings as of Sept. 11

	W	L
Dancer's Store	6	2
Blanche's Beauty Salon	6	2
Saturday morning	6	2
Sportman's Tavern	5	3
Dexter Bowling Club	5	3
McLeod's Drugs	4	4
Central Fibre Products	3	5
Dexter Bank	2	6
Ehms Grocery	1	7

Team high series: Blanche's Beauty Salon, 781.

Team high game: Blanche's Beauty Salon, 781.

Individual high series: Margaret Guenther, 488; Marian Murray, 487.

Individual high game: Selma Haub, 193; Marian Murray, 180; Margaret Guenther, 176; Lorraine Graf, 176.

### Hunting Licenses

Now in Dealers Hands Throughout State

Lansing — Permit application cards for antlerless deer shooting will be at hunting license dealers throughout the state early in the week of Sept. 17, along with copies of Michigan's 1962 game licenses, the Conservation Department announces.

Hunters will have until mid-night, Oct. 10, to postmark their applications for mailing to the Department's Lansing office.

Between now and that date, more than 200,000 persons are expected to apply for nearly 86,000 permits which will be issued for antlerless deer hunting in 32 northern food-shortage areas.

Drawings will be held in late October to determine who will receive permits for areas in which applications exceed permit quotas.

Hunters are reminded to follow closely instructions given in the 1962 Deer Hunting Guide when filling out application forms. Copies of the guide are available with application cards.

## PETITION

To The Clerk at the

## TOWNSHIP OF FREEDOM

County of Washtenaw, State of Michigan

A petition has been presented to the Clerk of the Township of Freedom, County of Washtenaw, State of Michigan, bearing the signatures of registered and qualified electors in the Township of Freedom, being in number not less than 35% of the total number of votes cast for all candidates for the office of Secretary of State in this township at the last general election held for such purpose, respectfully petitioning that the following question be submitted to the electors of this township at the next regular State election to be held in said township; to wit: on the sixth day of November, 1962.

"Shall the sale of spirits in addition to beer and wine be permitted for consumption on the premises within the Township of Freedom, under the provisions of the law governing same."

YES ☐

NO ☐

This petition is submitted pursuant to the laws of this State applicable thereto, being Sec. 56 of Act 8 of 1933 (Ex. Session) as amended (C. L. 48, Section 436.56; Michigan Statutes annotated, Section 18, 1027.)

**TOWNSHIP OF FREEDOM**

**WILL RENO, CLERK**

**Health in a Glass!**

That's MILK! for the children's after-school snack, with the family's meals, anytime a quick "pop-up" is called for... milk fills the bill with a full measure of bounding good health!

**WEINBERG DAIRY**

Phone GR 5-5771

**Come Out and Enjoy STOCK CAR RACING**

at

**MANCHESTER SPEEDWAY**

The Track with Special Events

**SUNDAY, SEPT. 23 and SEPT. 30**

Specialty This Sunday Afternoon:

**DESTRUCTION DERBY**—These cars will run until demolished or quit.

—★—

2 1/2 Miles out South Macomb St., Manchester

—★—

Time Trials 1 p.m. Racing at 2:30 p.m.

—★—

**ADULTS: \$1.25 CHILDREN under 12: FREE**

**SEE US NOW for your SEED WHEAT and FERTILIZER**

Certified Genesee Seed Wheat . . \$2.90 bu.

1st Year Cert. Genesee Seed Wheat \$2.50 bu.

**Bulk Fertilizer SWIFT'S PREMIUM**

12 - 12 - 12 . . . . . \$63.00 ton

5 - 20 - 20 . . . . . \$66.00 ton

6 - 24 - 12 . . . . . \$69.00 ton

Also: Bagged 3-0 Davco Fertilizer

**COMPARE and SAVE!**

We Will Begin Custom Seed Wheat Cleaning and Treating Monday, Sept. 10

**Blaess Elevator Co.**

Phone GR 9-6511

Four Mile Lake Chelsea, Mich.

**SEE US NOW for your SEED WHEAT and FERTILIZER**

Certified Genesee Seed Wheat . . \$2.90 bu.

1st Year Cert. Genesee Seed Wheat \$2.50 bu.

**Bulk Fertilizer SWIFT'S PREMIUM**

12 - 12 - 12 . . . . . \$63.00 ton

5 - 20 - 20 . . . . . \$66.00 ton

6 - 24 - 12 . . . . . \$69.00 ton

Also: Bagged 3-0 Davco Fertilizer

**COMPARE and SAVE!**

We Will Begin Custom Seed Wheat Cleaning and Treating Monday, Sept. 10

**Blaess Elevator Co.**

Phone GR 9-6511

Four Mile Lake Chelsea, Mich.

**VANS GUN SHOP**

UNADILLA, MICHIGAN

Authorized Colt and Ithaca Dealer

**NEW and USED RIFLES, SHOTGUNS and PISTOLS**

CUSTOM STOCKS — GENERAL GUNSMITHING

MUZZLE LOADING GUNS and SUPPLIES

Spring and Summer Hours: Weekdays, 5:30 p.m. to 9:00 p.m.  
Saturday, 9:00 a.m. to 9:00 p.m.; Sunday, 12 noon to 6:00 p.m.

**FISH FRY EVERY FRIDAY**

Served from 10 a.m. to 2 a.m.—\$1.00

**DINNERS (7 Days and 7 Nights a Week)**

CHICKEN	\$1.25	Dinners include
STEAK	\$1.35	Tossed Salad
SHRIMP	\$1.25	and French Fries.

1/4 lb. HAMBURGER 35c

**SPECIAL ONION RINGS 35c**

Open from 6 a.m. to 2 a.m.

**THE PUB BAR**

Hank and Pat Ortring

**AUCTION SUNDAY, SEPT. 23**

Starting at 2 p.m. Sharp

We must liquidate all of our present inventory to make room for the tremendous amount of furniture, appliances, carpets, bedding. We have just purchased truck loads of merchandise from several factories. As we do not have the available warehouse, we feel that it is in the public interest to hold this "AUCTION SALE" to create the fast selling action needed to eliminate extra cost in handling, warehousing, trucking and probable damages occurred in such handling. This huge purchase of home furnishings from factories overloaded. Must be moved here within the next few days. We need the space. Everything sold during "AUCTION SALE" must be moved within 4 days.

**ALL NEW MERCHANDISE**

A FEW SAMPLES OF HUNDREDS OF ITEMS

Living Room Suites - Bedroom Suites

Beds & Bedding

Kitchen Furniture - Fine Carpeting

Appliances

**AUCTION SPECIALS**

BETWEEN 1 AND 2:30 P.M.

FLASHLIGHT BATTERIES	49c
PILLOWS CASES, pair	39c
LIQUID LAUNDRY DETERGENT	59c
IRONING BOARD PAD & COVER SET	39c
MEN'S LEATHER BILLFOLDS	99c
ALL-FOAM RUBBER BED PILLOW, ea.	\$1.99
END TABLES, LAMPS, each	\$3.99
END TABLES or COFFEE TABLES, ea.	\$4.99
9x12 LINOLEUM RUGS	\$18.99
9x12 LIVING ROOM RUGS	\$24.99
5-Pc. DINETTE SET, 4 chairs, foam seats	\$44.99
RECLINER CHAIRS	\$59.00
3-PC. BEDROOM SUITE	\$59.00
2-PC. LIVING ROOM SUITE	\$59.00
3-PC. CURVED SECTIONAL	\$98.00

**TERMS: 2 Years To Pay**

**FREE DOOR PRIZES**

**H & L BRENNAN, Distr., Inc.**

Located on US-12 between Saline and Clinton



## Club and Social Activities

**MARY-MARTHA CIRCLE**  
The Mary-M Martha Circle of the Methodist church held the first meeting of the current year Tuesday evening at the home of Mrs. Duane Luick. Co-hostesses were Mrs. Ralph Rappette and Mrs. Keith Rappette.

**KINDER KLUB**  
The Kinder Klub from its first child study meeting of the 1962-63 season at the home of Mrs. Benjamin K. Bower, mother-in-law of Mrs. Benjamin K. Bower.

**JAYCEE AUXILIARY**  
The Sept. 18 meeting of the Jaycee Auxiliary was held at the home of Mrs. Charles Goldman. The evening's entertainment was a very informative tour through the German Instrument Co., the guide being Ron Cadogan.

**ENGAGED**  
Mr. and Mrs. Albert Verschaave of Ann Arbor Rd., Dexter, announce the engagement and approaching marriage of their daughter, Donna-Jean Joann, to Gerald P. Blough of Grass Lake. The prospective bridegroom is the son of Mr. and Mrs. Philip Blough of Grass Lake. The wedding will be an event of Oct. 20 at St. Joseph Catholic church, Dexter.

**JERUSALEM HOMEMAKERS**  
Jerusalem Homemakers Extension club, with 16 members present met Tuesday evening at the home of Mrs. Paul Elsom whose daughter, Joyce, was co-hostess.

**WOMEN'S GUILD**  
The lesson for the meeting was on the topic, "Changes in Family Living."

**OLD ADULT GROUP**  
The Rev. S. D. Kinde opened the meeting of the Older Adult group at the Methodist church social center Saturday with prayer preceding the 12:30 p.m. pot-luck dinner.

**ARMSTRONG LINOLEUM**  
**ARMSTRONG'S VINYL CORLON FLOORS**  
**ARMSTRONG COUNTERS**  
**ARMSTRONG TILE**  
**FREE ESTIMATES**  
**CALL GR 5-5711**

Highly qualified and experienced mechanics assures you the finest installation. No waiting.

**MERKEL BROTHERS**

**ANNOUNCING**  
**FRASER'S STAINLESS**

OUR NEW HOLLOWARE LINE  
BEAUTIFUL TO SEE  
WONDERFUL TO OWN  
FABULOUS FOR GIFTS  
Priced \$3.95 to \$15.95

**ARMSTRONG FLOOR**  
installed in your home

**ARMSTRONG LINOLEUM**  
**ARMSTRONG'S VINYL CORLON FLOORS**  
**ARMSTRONG COUNTERS**  
**ARMSTRONG TILE**  
**FREE ESTIMATES**  
**CALL GR 5-5711**

Highly qualified and experienced mechanics assures you the finest installation. No waiting.

**MERKEL BROTHERS**

**ANNOUNCING**  
**FRASER'S STAINLESS**

OUR NEW HOLLOWARE LINE  
BEAUTIFUL TO SEE  
WONDERFUL TO OWN  
FABULOUS FOR GIFTS  
Priced \$3.95 to \$15.95

**MERKEL BROTHERS**

**ANNOUNCING**  
**FRASER'S STAINLESS**

OUR NEW HOLLOWARE LINE  
BEAUTIFUL TO SEE  
WONDERFUL TO OWN  
FABULOUS FOR GIFTS  
Priced \$3.95 to \$15.95

**MERKEL BROTHERS**

**ANNOUNCING**  
**FRASER'S STAINLESS**

OUR NEW HOLLOWARE LINE  
BEAUTIFUL TO SEE  
WONDERFUL TO OWN  
FABULOUS FOR GIFTS  
Priced \$3.95 to \$15.95

**MERKEL BROTHERS**

**ARMSTRONG FLOOR**  
installed in your home

**ARMSTRONG LINOLEUM**  
**ARMSTRONG'S VINYL CORLON FLOORS**  
**ARMSTRONG COUNTERS**  
**ARMSTRONG TILE**  
**FREE ESTIMATES**  
**CALL GR 5-5711**

Highly qualified and experienced mechanics assures you the finest installation. No waiting.

**MERKEL BROTHERS**

**ANNOUNCING**  
**FRASER'S STAINLESS**

OUR NEW HOLLOWARE LINE  
BEAUTIFUL TO SEE  
WONDERFUL TO OWN  
FABULOUS FOR GIFTS  
Priced \$3.95 to \$15.95

**MERKEL BROTHERS**

**ANNOUNCING**  
**FRASER'S STAINLESS**

OUR NEW HOLLOWARE LINE  
BEAUTIFUL TO SEE  
WONDERFUL TO OWN  
FABULOUS FOR GIFTS  
Priced \$3.95 to \$15.95

**MERKEL BROTHERS**

**ANNOUNCING**  
**FRASER'S STAINLESS**

OUR NEW HOLLOWARE LINE  
BEAUTIFUL TO SEE  
WONDERFUL TO OWN  
FABULOUS FOR GIFTS  
Priced \$3.95 to \$15.95

**MERKEL BROTHERS**

**ARMSTRONG FLOOR**  
installed in your home

**ARMSTRONG LINOLEUM**  
**ARMSTRONG'S VINYL CORLON FLOORS**  
**ARMSTRONG COUNTERS**  
**ARMSTRONG TILE**  
**FREE ESTIMATES**  
**CALL GR 5-5711**

Highly qualified and experienced mechanics assures you the finest installation. No waiting.

**MERKEL BROTHERS**

**ANNOUNCING**  
**FRASER'S STAINLESS**

OUR NEW HOLLOWARE LINE  
BEAUTIFUL TO SEE  
WONDERFUL TO OWN  
FABULOUS FOR GIFTS  
Priced \$3.95 to \$15.95

**MERKEL BROTHERS**

**ANNOUNCING**  
**FRASER'S STAINLESS**

OUR NEW HOLLOWARE LINE  
BEAUTIFUL TO SEE  
WONDERFUL TO OWN  
FABULOUS FOR GIFTS  
Priced \$3.95 to \$15.95

**MERKEL BROTHERS**

**ANNOUNCING**  
**FRASER'S STAINLESS**

OUR NEW HOLLOWARE LINE  
BEAUTIFUL TO SEE  
WONDERFUL TO OWN  
FABULOUS FOR GIFTS  
Priced \$3.95 to \$15.95

**MERKEL BROTHERS**

**ARMSTRONG FLOOR**  
installed in your home

**ARMSTRONG LINOLEUM**  
**ARMSTRONG'S VINYL CORLON FLOORS**  
**ARMSTRONG COUNTERS**  
**ARMSTRONG TILE**  
**FREE ESTIMATES**  
**CALL GR 5-5711**

Highly qualified and experienced mechanics assures you the finest installation. No waiting.

**MERKEL BROTHERS**

**ANNOUNCING**  
**FRASER'S STAINLESS**

OUR NEW HOLLOWARE LINE  
BEAUTIFUL TO SEE  
WONDERFUL TO OWN  
FABULOUS FOR GIFTS  
Priced \$3.95 to \$15.95

**MERKEL BROTHERS**

**ANNOUNCING**  
**FRASER'S STAINLESS**

OUR NEW HOLLOWARE LINE  
BEAUTIFUL TO SEE  
WONDERFUL TO OWN  
FABULOUS FOR GIFTS  
Priced \$3.95 to \$15.95

**MERKEL BROTHERS**

**ANNOUNCING**  
**FRASER'S STAINLESS**

OUR NEW HOLLOWARE LINE  
BEAUTIFUL TO SEE  
WONDERFUL TO OWN  
FABULOUS FOR GIFTS  
Priced \$3.95 to \$15.95

**MERKEL BROTHERS**

**ARMSTRONG FLOOR**  
installed in your home

**ARMSTRONG LINOLEUM**  
**ARMSTRONG'S VINYL CORLON FLOORS**  
**ARMSTRONG COUNTERS**  
**ARMSTRONG TILE**  
**FREE ESTIMATES**  
**CALL GR 5-5711**

Highly qualified and experienced mechanics assures you the finest installation. No waiting.

**MERKEL BROTHERS**

**ANNOUNCING**  
**FRASER'S STAINLESS**

OUR NEW HOLLOWARE LINE  
BEAUTIFUL TO SEE  
WONDERFUL TO OWN  
FABULOUS FOR GIFTS  
Priced \$3.95 to \$15.95

**MERKEL BROTHERS**

**ANNOUNCING**  
**FRASER'S STAINLESS**

OUR NEW HOLLOWARE LINE  
BEAUTIFUL TO SEE  
WONDERFUL TO OWN  
FABULOUS FOR GIFTS  
Priced \$3.95 to \$15.95

**MERKEL BROTHERS**

**ANNOUNCING**  
**FRASER'S STAINLESS**

OUR NEW HOLLOWARE LINE  
BEAUTIFUL TO SEE  
WONDERFUL TO OWN  
FABULOUS FOR GIFTS  
Priced \$3.95 to \$15.95

**MERKEL BROTHERS**

**ARMSTRONG FLOOR**  
installed in your home

**ARMSTRONG LINOLEUM**  
**ARMSTRONG'S VINYL CORLON FLOORS**  
**ARMSTRONG COUNTERS**  
**ARMSTRONG TILE**  
**FREE ESTIMATES**  
**CALL GR 5-5711**

Highly qualified and experienced mechanics assures you the finest installation. No waiting.

**MERKEL BROTHERS**

**ANNOUNCING**  
**FRASER'S STAINLESS**

OUR NEW HOLLOWARE LINE  
BEAUTIFUL TO SEE  
WONDERFUL TO OWN  
FABULOUS FOR GIFTS  
Priced \$3.95 to \$15.95

**MERKEL BROTHERS**

**ANNOUNCING**  
**FRASER'S STAINLESS**

OUR NEW HOLLOWARE LINE  
BEAUTIFUL TO SEE  
WONDERFUL TO OWN  
FABULOUS FOR GIFTS  
Priced \$3.95 to \$15.95

**MERKEL BROTHERS**

**ANNOUNCING**  
**FRASER'S STAINLESS**

OUR NEW HOLLOWARE LINE  
BEAUTIFUL TO SEE  
WONDERFUL TO OWN  
FABULOUS FOR GIFTS  
Priced \$3.95 to \$15.95

**MERKEL BROTHERS**

**ARMSTRONG FLOOR**  
installed in your home

**ARMSTRONG LINOLEUM**  
**ARMSTRONG'S VINYL CORLON FLOORS**  
**ARMSTRONG COUNTERS**  
**ARMSTRONG TILE**  
**FREE ESTIMATES**  
**CALL GR 5-5711**

Highly qualified and experienced mechanics assures you the finest installation. No waiting.

**MERKEL BROTHERS**

**ANNOUNCING**  
**FRASER'S STAINLESS**

OUR NEW HOLLOWARE LINE  
BEAUTIFUL TO SEE  
WONDERFUL TO OWN  
FABULOUS FOR GIFTS  
Priced \$3.95 to \$15.95

**MERKEL BROTHERS**

**ANNOUNCING**  
**FRASER'S STAINLESS**

OUR NEW HOLLOWARE LINE  
BEAUTIFUL TO SEE  
WONDERFUL TO OWN  
FABULOUS FOR GIFTS  
Priced \$3.95 to \$15.95

**MERKEL BROTHERS**

**ANNOUNCING**  
**FRASER'S STAINLESS**

OUR NEW HOLLOWARE LINE  
BEAUTIFUL TO SEE  
WONDERFUL TO OWN  
FABULOUS FOR GIFTS  
Priced \$3.95 to \$15.95

**MERKEL BROTHERS**

## This Week In History

Wilbur Wright, at Le Mans, France, flew 1 hour, 31 minutes and 29 seconds, September 21, 1909. A hurricane devastated the Atlantic seaboard, September 21, 1938.

Nathan Hale was executed, September 22, 1776. Gene Tunney defeated Jack Dempsey to win the world's heavyweight boxing championship, September 22, 1926.

A baseball rule code was adopted at Hoboken, N.J., September 23, 1845.

A "Black Friday" occurred September 23, 1889 as a result of an attempt by capitalists James Fisk, Jr., and Jay Gould to corner the gold market by buying all the gold in New York City banks.

Columbus sighted land, September 25, 1492. Woodrow Wilson died, February 3, 1924.

Thomas Jefferson was appointed first Secretary of State; Samuel Osgood was appointed first Postmaster General, September 26, 1789.

Germany, Italy and Japan signed a Triple Alliance, September 27, 1940. The first Liberty Ship was launched, September 27, 1941.

## Just a little more For a LARGER KEEPSAKE

You get full current value on your present diamond ring toward a larger, more brilliant keepsake. Come in and see our selection of genuine registered Keepsake Diamond Rings, all beautifully styled.



**JULIET** \$575.00 **DUDLEY** \$300.00  
Also \$500 and 2475 Also \$450, 500, 675  
Wedding Ring \$175.00 Wedding Ring \$125.00

**Keepsake**  
DIAMOND RINGS

YOU CAN PAY MORE BUT YOU CAN'T BUY A FINER DIAMOND RING THAN A KEEPSAKE

Rings enlarged to show detail. Prices include Federal Tax.

**Winans Jewelry Store**

## Luick-Grossman Vows Are Spoken Friday Afternoon

Announcement is being made of the marriage of Mrs. Mae Padden Luick and Waldemar J. Grossman which took place at 4 o'clock Friday afternoon at the Congregational church. The Rev. Philip Gusten officiated at the double ceremony in the presence of the immediate families of the couple.

Their parents are Mr. and Mrs. Harry Prudden of Washington St. and Mr. and Mrs. Louis Grossman of Manchester.

The couple's attendants were the bride's son and daughter, Kenneth and Nancy Luick, who performed the duties of best man and maid of honor.

For her wedding the bride wore a street-length dress of royal blue shantung with a matching jacket. Her accessories included a multi-colored feather hat and a corsage of yellow and white pompon chrysanthemums.

Miss Luick wore a brown print dress with brown accessories and a veil-trimmed hat. Her corsage, as well as the one worn by the bride's mother, was also of yellow and white mums.

A reception for members of the family followed in the church parlors, those assisting including Mrs. Frederick Wagner, Mrs. Robert Wagner, Mrs. Russell McLaughlin and Mrs. Cameron Burns.

Mr. and Mrs. Grossman are residing at 760 Plundera St.

**LIMA CENTER**

Lima Center Extension club, with 16 members and one guest present, met at Lima Center hall Wednesday, Sept. 12.

An interesting meeting revolved around a discussion of plans for the club's work for the coming year.

The group also worked on a project of making Halloween favors for the patients at Ypsilanti State Hospital.

Club members decided to change their next meeting date to Oct. 31 in order that all may attend an Arts and Crafts Hobby Show at the Youth Activities Center on Saline-Ann Arbor Rd. The show will take place Oct. 10 which would have been the regular meeting date of the club.

## Women's Guild Starts Year on Anniversary Theme

At the first regular meeting of the 1962-63 season of the Women's Guild of St. Paul's church, the program centered on an anniversary theme—recognition, first of all, of the 75th anniversary of the founding of the former Ladies Aid Society, forerunner of the present women's organization which is known as the Women's Guild.

The anniversary celebration, recognized too, the founding of another former women's society, the Women's Auxiliary on Sept. 16, 1921, and the merging of the two groups in January, 1947, as the Women's Union. The name was later changed to Women's Guild which now designates the women's organizations of the entire Evangelical and Reformed Church. The latter organization on a national basis was founded 20 years ago.

Wednesday's meeting opened with a dinner prepared and served by the Fellowship Circle of the Women's Guild of which Mrs. Alvin Vail is chairman.

Approximately 75 women had made reservations for the dinner. Bouquets of fresh flowers decorated the tables and these were later presented to the senior members present.

Following a short business meeting, the evening's program was opened with a history of the 75 years of women's organizational activities at St. Paul's church; it was given in four sections by Mrs. Alma Meserve, Mrs. Margaret Dietle, Mrs. David Statler and Mrs. Lowell Davison. The historical material had been prepared by a committee which included Mrs. Louis Burghardt, Mrs. Meserve, Mrs. Paul F. Niehaus, Mrs. P. G. Schable, Sr., and Mrs. Davison.

A tableau was presented showing the organizational meeting of the Ladies Aid Society May 11, 1887, at the church parsonage with the pastor at that time, the Rev. G. Robertus.

Dressed in old-fashioned costumes, those who took part are Mrs. Herbert Paul, Mrs. Adam Eppler, Mrs. Emma Seitz, Mrs. Amanda Mayer, Mrs. Christina Nicolai, Mrs. Oscar Sjerle, Miss Dorothea Fielemeyer and Mrs. H. P. Marks. They joined in singing the German hymn sung at that first meeting and at many succeeding meetings through the years, "Jesus Geh' Voran" (Jesus, Still Lead On).

The Aid Society was organized with the specific purpose of working to supplement the church treasury—the group gave church suppers in Sylvan Town Hall (there was no dining area at the church), some of the earliest meals being served to the public for 25, 35 and later, 60 cents per person. Their monthly meetings were conducted by the pastor in the German language.

The Women's Auxiliary was organized to accommodate the women of the church who were less familiar with the German language, their meetings and programs being conducted in English.

Some of the more outstanding innovations since the two societies merged in 1947 include establishment of a church library; formation of Circles within the Guild for more intimate contact with all women of the church; and additional concern for matters beyond the local church in Guild programming.

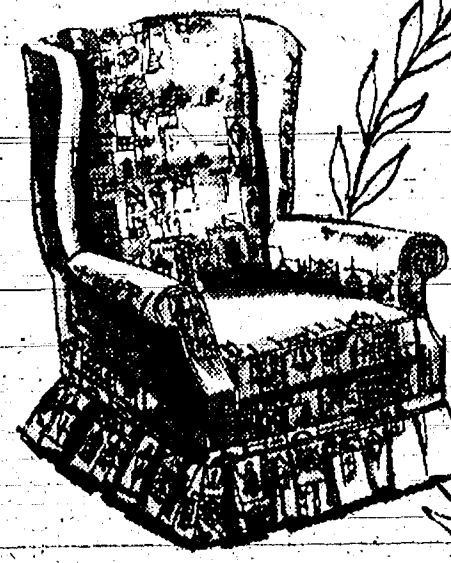
Mrs. Davison, the present Guild president, concluded the program with a brief resume of "A Look into the Future." She said "Each year brings opportunities to pioneer, and it is necessary that we be aware of current needs and find ways to meet them. Before we are our homes, our places of work, our community, our local church, our denomination, our nation and our world. Each one is a concern to us as Christians. Our world has become One World. Women of this day have new responsibilities that were not dreamed of by past generations. What do we need today? We need the ordinary member of the church, for around him or her everything in the Church and world revolves."



## Colonial Chair & Sofa Sale

Custom tailored in NYLON\* fabrics

\*Fabrics include 100% NYLON tweed; 100% NYLON plain NYLON face warp tapestries; and a NYLON pile tulle.



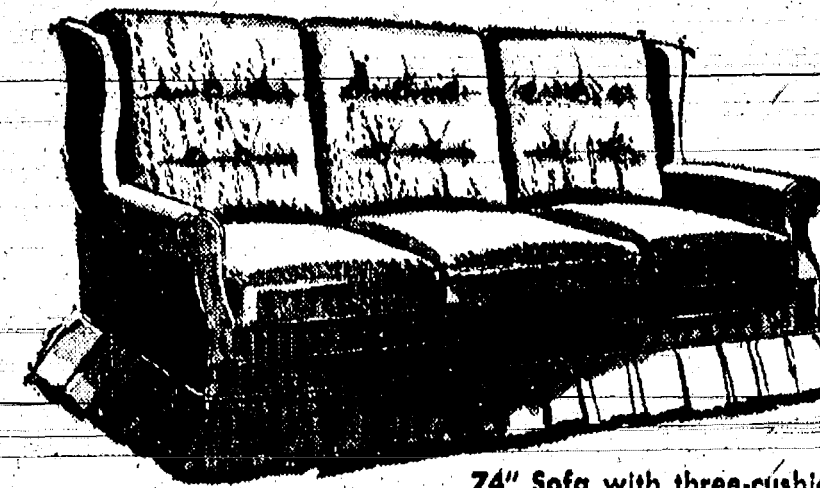
High-Back Wing Chair: The man of the house will make this his favorite lounge chair.

\$119<sup>50</sup>



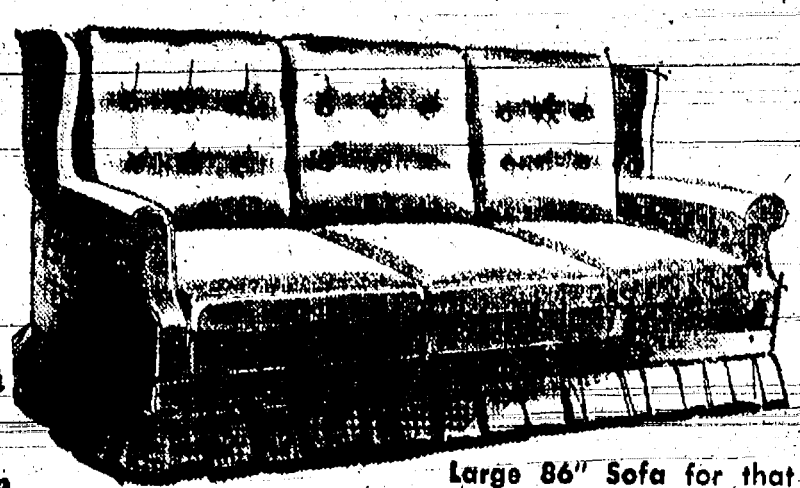
Low-Back Wing Chair: All the comfort and beauty of the High-Back Chair, but scaled for those rooms that call for less massive pieces.

\$99<sup>95</sup>



74" Sofa with three-cushion seat and back. Ample seating for three or four in a handsomely compact piece. You'll love its inviting warmth and charm.

\$199<sup>50</sup>



Large 86" Sofa for that large room or long wall space. Here's plenty of room for Dad's nap after dinner in king size comfort.

\$229<sup>95</sup>

**MERKEL BROTHERS**

BEAUTIFUL HOME FURNISHINGS



## - Services in Our Churches -

### CONGREGATIONAL CHURCH

(United Church of Christ)

The Rev. Philip Rusten, Pastor

Thursday, Sept. 20—

7:30 p.m.—Choir rehearsal.

Sunday, Sept. 23—

10:00 a.m.—Worship service and church school.

Wednesday, Sept. 26—

1:30-4:00 p.m.—Women's Fellowship coffee hour with displays of materials and an opportunity to greet new officers and chairmen.

7:30-9:00 p.m.—Women's Fellowship coffee hour for those who cannot come in the afternoon.

ST. BARNABAS

EPISCOPAL CHURCH

20500 Old US-12

The Rev. J. R. Smucker, Vicar

Thursday, Sept. 20—

4:00 p.m.—Choir rehearsal.

6:30 p.m.—Covered-dish family supper.

Friday, Sept. 21—

Ember day and St. Matthew's day.

8:00 a.m.—Holy Communion.

Saturday, Sept. 22—

8:00 a.m.—Ember day Holy Communion.

Sunday, Sept. 23—

8:00 a.m.—Holy Communion.

9:00 a.m.—Church school.

10:00 a.m.—Morning Prayer.

Thursday, Sept. 27—

7:45 p.m.—ECW meeting at the church.

MT. HOPE METHODIST

CHURCH

Cor. Seymour and Mt. Hope Rds.

The Rev. Karl H. Keefe, Pastor

Sunday, Sept. 23—

10:30 a.m.—Sunday school. Mrs. Ardell Lantis, superintendent.

11:15 a.m.—Drive-in worship service. Continuation of the study of the Gospel according to St. Mark. Sermon topic: "Jesus As A Teacher," using Scripture passage from the third chapter.

Anyone who has not yet received a copy of the Book of Mark will receive one at this time.

ANNOUNCEMENT

Dr. J. B. Casey

announces the removal

of his office from

First and Greenwood

Jackson, Mich.

to 271 Cavanaugh Lake

for the general practice

of dentistry.

Phone: Greenwood 5-8300

### ST. PAUL'S EVANGELICAL

AND REFORMED CHURCH

(United Church of Christ)

The Rev. Paul M. Schnake, Pastor

Thursday, Sept. 20—

8:00 p.m.—Meeting of prospective confirmands and their parents with the pastor.

Saturday, Sept. 22—

10:00 a.m.—Confirmation class.

Sunday, Sept. 23—

8:15 a.m.—Early worship service.

9:30 a.m.—Sunday school.

10:45 a.m.—Second service.

Tuesday, Sept. 25—

4:00 p.m.—Confirmation class.

Wednesday, Sept. 26—

8:00 p.m.—Sunshine Circle meeting.

Tuesday-Wednesday, Oct. 2-3—

Synodical Women's Guild training sessions at Emanuel church, Manchester.

FIRST METHODIST CHURCH

The Rev. S. D. Kinde, Pastor

Thursday, Sept. 20—

8:00 p.m.—Senior choir rehearsal.

8:00 p.m.—Commission on Missions in the church office.

Saturday, Sept. 22—

10:30 a.m.—Junior choir rehearsal.

Sunday, Sept. 23—

10:00 a.m.—Morning worship service.

10:00 a.m.—Nursery, kindergarten, primary and junior department Sunday school departments.

11:00 a.m.—Fellowship coffee hour. Hostesses: Mrs. Russell Baldwin and Mrs. Floyd Gillett.

11:00 a.m.—Youth and adult church school classes.

7:00 p.m.—Senior MYF meeting.

Monday, Sept. 24—

8:00 p.m.—Commission on Education meeting.

Wednesday, Sept. 26—

8:00 p.m.—First quarterly conference with Dr. Verlin Main of First Methodist church, Ann Arbor, presiding. Conference to be held in the educational unit.

ST. MARY'S

CATHOLIC CHURCH

The Rev. Fr. Francis Maliszewski

Sunday, Sept. 23—

Masses at 6:30 a.m., 8 a.m., 10 a.m. and 11:30 a.m.

ST. JOHN'S EVANGELICAL

AND REFORMED CHURCH

(United Church of Christ)

(Rogers Corners)

The Rev. J. Tracy Luke, Pastor

Sunday, Sept. 23—

9:30 a.m.—Worship service.

10:30 a.m.—Sunday school.

### ZION LUTHERAN CHURCH

(Rogers Corners)

The Rev. C. J. Renner, Pastor

Saturday, Sept. 22—

9:30 a.m.—Junior catechism class.

10:45 a.m.—Senior catechism class.

Sunday, Sept. 23—

9:00 a.m.—Sunday school.

10:15 a.m.—Worship service.

3:00-5:00 p.m.—Pastors' and laymen's official conference at the Lutheran church at Blissfield.

7:30 p.m.—Luther League hayride.

Monday, Sept. 24—

7:00 p.m.—Junior choir rehearsal.

8:00 p.m.—Senior choir rehearsal.

Tuesday, Sept. 25—

7:30 p.m.—Women's shuffleboard.

Thursday, Sept. 27—

7:30 p.m.—Luther League regular meeting.

ST. THOMAS

EVANGELICAL LUTHERAN

Freedom Township

Ellsworth and Haab Road

The Rev. Richard W. Bischoff

There will be no services until Sunday, Oct. 7.

BETHEL EVANGELICAL AND

REFORMED CHURCH

(United Church of Christ)

Freedom Township

The Rev. T. W. Menzel, Pastor

Saturday, Sept. 22—

9:00 a.m.—Confirmation instruction.

Sunday, Sept. 23—

Annual Mission Festival.

10:00 a.m.—Morning service.

Speaker: the Rev. Heinrich Rest, of Mt. Clemens, former member of policy committee of the Committee on International Missions of the United Church of Christ.

8:00 p.m.—Evening service.

Speaker: the Rev. William P. Hastings of Hudson, formerly active in educational projects in San Juan, Puerto Rico.

There will be no Sunday school.

Tuesday, Sept. 25—

8:00 p.m.—Adult Fellowship at the church.

ST. JOHN'S EVANGELICAL

AND REFORMED CHURCH

(United Church of Christ)

(Francisco)

The Rev. J. Tracy Luke, Pastor

Sunday, Sept. 23—

10:15 a.m.—Sunday school.

11:00 a.m.—Worship service.

SALEM GROVE

METHODIST CHURCH

The Rev. John Jolley, Pastor

Sunday, Sept. 23—

10:00 a.m.—Sunday school.

11:15 a.m.—Worship service.

FIRST ASSEMBLY OF GOD

CHURCH

14900 Old US-12

The Rev. Harold S. Bilotta, Pastor

Sunday, Sept. 23—

9:45 a.m.—Sunday school.

11:00 a.m.—Worship service.

6:30 p.m.—Young people's service.

7:30 p.m.—Evening service.

Prayer meeting and Bible study each Tuesday at 7:30 p.m.

NORTH LAKE

METHODIST CHURCH

The Rev. John Jolley

Sunday, Sept. 23—

9:30 a.m.—Worship service.

10:45 a.m.—Sunday school.

CHELSEA BAPTIST CHURCH

The Rev. David A. Wood, Pastor

Sunday, Sept. 23—

10:00 a.m.—Sunday school.

11:00 a.m.—Worship service.

7:00 p.m.—Young people's service.

7:00 p.m.—Evening service.

Prayer meeting Wednesdays at 7:30 p.m.

NORTH SHARON

COMMUNITY BIBLE CHURCH

The Rev. Carmen Carpenter, Pastor

Sylvan and Washburn Roads

Sunday, Sept. 23—

10 a.m.—Sunday school.

11 a.m.—Worship service.

7 p.m.—Evening service.

Prayer meeting each Wednesday evening at 8 o'clock.

WATERLOO VILLAGE CHURCH

(Evangelical United Brethren)

The Rev. Wilbur Silvernail, Pastor

Sunday, Sept. 23—

10:00 a.m.—Sunday school.

11:00 a.m.—Worship service.

7:00 p.m.—Youth Fellowship.

### UNADILLA

PRESBYTERIAN CHURCH

The Rev. William Yauch, Pastor

Sunday, Sept. 23—

10 a.m.—Worship service.

11 a.m.—Church school.

CHURCH OF CHRIST

13661 Old US-12, East

Murray S. Hudgins, Minister

Sunday, Sept. 16—

10:00 a.m.—Sunday school.

11:00 a.m.—Worship service.

6:00 p.m.—Worship service.

Bible study each Thursday at 7 p.m.

FIRST CHURCH OF CHRIST

SCIENTIST

1883 Washtenaw Ave., Ann Arbor

Sunday, Sept. 23—

9:30 a.m.—Sunday school.

11:00 a.m.—Morning service.

Lesson-sermon: "Matter," stressing how changing one's standpoint can mean in meeting today's challenges. Golden text: "Love not the world, neither the things that are in the world," taken from 1 John 2.

GREGORY BAPTIST CHURCH

The Rev. Robert Ramsey, Pastor

Sunday, Sept. 23—

10:00 a.m.—Sunday school.

11:00 a.m.—Morning worship.

7:30 p.m.—Evening worship.

### METHODIST HOME CHAPEL

The Rev. E. J. Weiss, Pastor

The Rev. G. P. Stanford, Chaplain

Sunday, Sept. 23—

8:00 a.m.—Worship service.

COMING EVENTS

IN MICHIGAN

SEPTEMBER

16-23—Fall Perch Run, Tawas.

17-23—St. Joseph County Fair, Centerville.

21-24—Hudsonville Community Fair, Hudsonville.

21-25—Antique Show, Light Guard Armory, Detroit.

22—Lightning Sailboat Races, Traverse City.

23—Invitational Power Boat Races (no sails), Traverse City.

23-29—Hillsdale County Fair, Hillsdale.

28-30—Paul Bunyan Clan Meet, Traverse City.

29-30—Lightning Sailboat Make Up Race, Traverse City.

29-30—13th Annual Michigan Bow Hunter Deer Silhouette Shoot, Mid-Michigan Bowmen Range, Midland.

PLEASE USE A LITTERBAG—KEEP MICHIGAN CLEAN

### Dexter Legion

Proposal Adopted

By State Group

Members of the Dexter American Legion Post made their presence felt at the Fall Conference of the State American Legion.

At the meetings held in Kalamazoo, Sept. 14, 15 and 16, the Dexter delegates presented a resolution previously passed locally and at the Second District level, "That the Legion shall participate in Michigan Week by exchanging post commanders and officers during this state-wide celebration."

At the conclusion of the interview, Dr. Casey praised Kalmbach Interchange on I-94, saying "this is the best clover-leaf I have found on any highway including I-90 (mentioned in John Steinbeck's great new book, 'Travels With Charley')." Dr. Casey mentioned that the entrance to the back road up to his place on the top of "Breeze Hill" is no clover-leaf, but easy to find, and if missed, one car can always find room to park at the foot of the steps in front. He cautions that the road

Elsewhere in this issue of The Standard is an announcement pertaining to the return of Dr. Casey to Cavanaugh Lake. He had been in Jackson the past year.

In answer to some queries, the above Dr. Casey is no relative of TV's "neurosurgeon" Dr. Ben Casey. The Cavanaugh Lake dentist, when asked about this, said "Ben may have his patients 'sewn up' but I just put them in stitches occasionally."

Boys in the den are Arthur, Lee Dickelman, Barry M. Bruce Parks, David Conklin and John Hepburn.

Dr. Casey is an old resident and a recent article of his, "Shrub Roses in Michigan," recently published in the August Rose magazine.

Dr. Casey is an old resident and a recent article of his, "Shrub Roses in Michigan," recently published in the August Rose magazine.

Dr. Casey is an old resident and a recent article of his, "Shrub Roses in Michigan," recently published in the August Rose magazine.

Dr. Casey is an old resident and a recent article of his, "Shrub Roses in Michigan," recently published in the August Rose magazine.

Dr. Casey is an old resident and a recent article of his, "Shrub Roses in Michigan," recently published in the August Rose magazine.

Dr. Casey is an old resident and a recent article of his, "Shrub Roses in Michigan," recently published in the August Rose magazine.

Dr. Casey is an old resident and a recent article of his, "Shrub Roses in Michigan," recently published in the August Rose magazine.

Dr. Casey is an old resident and a recent article of his, "Shrub Roses in Michigan," recently published in the August Rose magazine.

Dr. Casey is an old resident and a recent article of his, "Shrub Roses in Michigan," recently published in the August Rose magazine.

Dr. Casey is an old resident and a recent article of



## RURAL CORRESPONDENCE

Items of Interest About People We All Know, as Gathered by Correspondents

## FOUR MILE LAKE

Mr. and Mrs. Floyd Spiegelberg of Dexter, were Friday afternoon visitors of Mrs. John Flischer and Mr. and Mrs. Harvey Flischer. Mr. and Mrs. William Snay were Sunday dinner guests of their son and daughter-in-law, Mr. and Mrs. Herman Snay and family, of Stockbridge. The dinner honored the birthday of Herman Snay.

Mr. and Mrs. Robert Blisseth of Napoleon were Sunday afternoon visitors of her parents, Mr. and Mrs. Clarence Moore.

Mr. and Mrs. Paul Bauer and family attended a get-together at the home of Mr. and Mrs. Bill Lutek and family, of Ypsilanti, Saturday evening. A pot-luck supper was served to 20 guests.

Sunday dinner guests of Mr. and Mrs. Burton Wright and family were her parents, Mr. and Mrs. Frank Abdon. Their afternoon visitors were Mr. and Mrs. Alan Elasser and son, of Dexter, Mr.

## WATERLOO

The Rev. and Mrs. Clark Adams here visiting the latter's sister, Mrs. Arthur Walz and Mrs. Walz accompanied them home and spent last week there. She returned home Sunday.

Mrs. Jessie Schulz spent a few days this week with her sister, Mrs. Dora Stoffer, at Stockbridge.

## NORTH FRANCISCO

Mr. and Mrs. Roy Miller returned home Monday afternoon from Beaver Valley, Pa., after visiting relatives and friends since last Thursday.

Mrs. Alda Lehman and Ray Gohn were Sunday afternoon visitors of Mrs. Ion Phillips of Mason.

Mr. and Mrs. Clifford Peterson, Raymond Peterson, Mrs. Nelson Peterson and grandson, Donald Rohde, and Mrs. Eva Barber spent Sunday at Otsego as guests of Mr. and Mrs. George Bronson for a picnic dinner.

Mr. and Mrs. Nelson Peterson called on Mr. and Mrs. Wilbur Tisch of near Stockbridge, Saturday evening.

Mrs. Glenn Rentschler spent Monday night at the home of her mother, Mrs. Leonard Loveland.

Mr. and Mrs. Chester Notten spent last Wednesday in Lansing visiting their daughter and her family, Mr. and Mrs. Chester Davis.

Wednesday afternoon visitors of Mr. and Mrs. Eva Notten and Gilbert Main were Mr. and Mrs. Lynn Main and father, DeWitt Main, of Jackson, Mrs. Howard Bergman and Mrs. Austin Artz. Their Sunday afternoon callers were Mr. and Mrs. Chester Notten, Mr. and Mrs. Ed Seeger, Mr. and Mrs. Walter

Riemenschneider and Mrs. T. G. Riemenschneider.

Mr. and Mrs. Carl Bihlmeyer of Ann Arbor were Sunday afternoon and supper guests of Mr. and Mrs. Dillman-Wahl.

Chester Notten, with his son, Henry, and grandson, Mark, were in Lansing Wednesday morning where they called on the former's daughter and her family, Mr. and Mrs. Chester Davis.

Martie Notten was a week-end guest of her grandparents at Houghton Lake.

## UNADILLA

The Gregory King's Daughters meeting will be held at the home of Mrs. Winnie Purchase in Unadilla on Sept. 26 in the afternoon.

Wednesday evening dinner guests of the Arthur Brooks family were Mr. and Mrs. Clair Barnum.

Miss Nellie Pickell was a house guest the past week at the Roy Gladstones of Plainfield.

On Thursday of last week Mrs. Winona Pickell called on Mrs. Nora Usher who is recuperating from an operation on her feet.

Mr. and Mrs. Orlin Young spent the first week of September at the home of their son-in-law and

daughter, Mr. and Mrs. Bert Rathburn in Ann Arbor.

On the occasion of their 35th wedding anniversary, Mr. and Mrs. Clair Barnum were dinner guests of their son-in-law and daughter, Mr. and Mrs. Charles Sullivan Saturday.

Mrs. Veva Kalmbach returned to Michigan after spending two weeks at the home of her daughter, Mrs. James Dent of Bethesda, Maryland.

Mr. and Mrs. Mell Franklin of Milford and Mrs. Grace Franklin of Howell were Sunday dinner guests of Mr. and Mrs. Erston Clarke.

Pfc. George Lee of Massachusetts called at the home of Max Kalmbach on Tuesday and again on Friday.

Mr. and Mrs. Erston Clarke were in Lansing on business on Monday of last week.

Mrs. Winona Pickett and Jack and Mr. and Mrs. Ralph Wright were Sunday dinner guests of Mrs. Alice Blair in Garden City.

Mr. and Mrs. Martin Kichhoff of Plymouth called on Mr. and Mrs. Max Kalmbach Friday evening.

Sunday's fine weather was enjoyed by Mr. and Mrs. Clair Barnum in company with Mr. and

## LYNDON TOWNSHIP

Gertrude Fry, of California, and Mr. and Mrs. Roy Fyles of Detroit, were Tuesday guests of Mr. and Mrs. Charles Thurmman.

Mrs. Nettie Hall spent from Friday until Monday with friends from Rogers Corners, on a trip to Niagara Falls and New York.

Dr. T. I. Clark and Howard Clark of Jackson, were Sunday callers of Mr. and Mrs. John O'Connor.

Mrs. Thomas Masterson spent Wednesday with her daughter and family, Mr. and Mrs. Bert Dierkes and children, at Orchard Lake.

Mr. and Mrs. Keyes Kalester of Lakeland, Fla., were Sunday dinner guests of Mr. and Mrs. Thomas Masterson.

Mr. and Mrs. Claude Ray Deatrick and children spent the weekend with her sister and family in Georgetown, O.

Mr. and Mrs. Herman Widmayer of Howell, Mr. and Mrs. Eugene Widmayer of Jackson, Mr. and Mrs. Harold Widmayer and son John, of Hayes Rd., and Dr. and Mrs. Wilfred Lane and daughter, Carolyn, of Chelsea were Sunday dinner guests of Mr. and Mrs. Laurence Noah.

Mr. and Mrs. William Hogan and daughter, Kathy, of Detroit, spent the weekend with her mother, Mrs. Homer Stoffer.

Mr. and Mrs. Austin Bott called Thursday at the home of Mr. and Mrs. Clarence Bott at Batteuse Lake; Sunday, Mr. and Mrs. Earl Lee and Mrs. Mary Clark and son, Dean, called there.

Mrs. Stephen Baker spent Friday with her daughter, Mrs. E. C. Chamberlain, at Hell.

Mr. and Mrs. Stephen Baker attended a dinner of the Sheep Breeders Association Sunday at the home of Mr. and Mrs. Erwin Haist.

Mr. and Mrs. Austin Bott spent the weekend and called Sunday on Harrison and called Sunday on Mr. and Mrs. Emerson Best and Mr. and Mrs. Wallace Cotton in Lansing and Mr. and Mrs. George Bott at Dansville.

## Club and Social Activities

## JERUSALEM FARM BUREAU

Jerusalem Farm Bureau met Thursday evening at the home of Mr. and Mrs. Oscar Stierle because of the severe storm that occurred in the area that evening, the attendance included only seven families.

The evening's business included the annual election, most officers being re-elected as follows: Irven Weiss, chairman; Lee Weiss, vice-chairman; Mrs. Bernard Horst, secretary and news reporter; Dave Pastor, discussion leader; David J. Pastor, minuteman; Walter Wolfgang, package reporter; Mrs. Arthur Kuhl, assistant discussion leader; Mrs. Dave Pastor, County Farm Bureau Women's Committee.

Discussion topic for the evening was, "Studying the Economic and Political Conditions which Affect the Net Income of Farmers."

The discussion was led by Dave Pastor.

The next meeting, on Oct. 11, will be held at the home of Mr. and Mrs. Leo Heltner.

## PHILATHEA CIRCLE

Members of the Afternoon Philathea Circle of the WSCS of the Methodist church, enjoyed a 12:30 p.m. luncheon in the church social center, Wednesday, Sept. 19. The committee in charge included Mrs. Mary Clark, Mrs. Irwin Klumpp, Mrs. Roy Kalmbach and Mrs. Howard Walz.

Devotions were led by Mrs. Fannie Chambers, Mrs. Ada Wiebe led in prayer.

The program on Missions was presented by Mrs. Walter Harper.

Guests were the Rev. and Mrs. S. D. Kinde, Mrs. Clare Warren and Mrs. Albert Peterson.

SUBURBAN MOTHERS

Suburban Mothers Child Study club, met by candlelight Thursday when electric power failed because of the storm that evening. The meeting, with 13 members present, was held at the home of Mrs. J. R. Killham.

Mrs. Robert Eisele, formerly vice-president, took over her new duties as president of the club because of the resignation of Mrs. Charles Sullivan. Mrs. Sullivan has moved out of the neighborhood.

Appointed to the office of vice-president was Mrs. Warren Walton while Mrs. Warren Eisele was made second vice-president. A husband's night meeting is scheduled for Sept. 22 at 8:30 p.m., and all who plan to attend are to contact Mrs. Robert Eisele, Mrs. Bob Fitzsimmons or Mrs. Bill Robertson.

ROGERS CORNERS FARM BUREAU

Rogers Corners Farm Bureau, with 11 families present, met Friday evening at the home of Mr. and Mrs. Harold Eismann.

Principal business at the meeting was election of officers.

Elected are Luther Schaible, chairman; Albert Schenk, assistant chairman; Mrs. Armin Kuhl, secretary; Harold Eismann, discussion leader; Loren Koenigter, minuteman; Mrs. John Miller, package reporter; Armin Kuhl, assistant discussion leader; Mrs. Erma Grau and Mrs. Wilbert Koenigter, Women's Committee members; Mr. Edwin Horning, recreation leader; Mrs. Armin Kuhl, news reporter; Mrs. Erma Grau, song leader.

Following the evening's discussion under the leadership of Earl Huebel, the group played euchre and refreshments were served by the hostesses. Oct. 12, the group will meet with Mr. and Mrs. Oscar Haecussler of Saline.

## September Birthday Party Held Today at Methodist Home

The monthly birthday party at the Methodist Home, honoring residents whose birthdays occur in September, is taking place at the Home today. There are 18 members in the group.

One of those honored is Mrs. Minnie Staebler, formerly of Ann Arbor, who is 95 years old. Her birthday was on Sept. 12.

Table decorations included clusters of bittersweet.

Ladies whose birthdays were celebrated received toilet articles as gifts and the men received ties. The gifts are provided for their pleasure by the Chelsea Home Friends of the Methodist Church.

Those whose birthdays occur in September, in addition to Mrs. Staebler, are Mrs. Mary Patterson, Mrs. Jane Hildebrand, Mrs. Christina Taggart, Mrs. Lillie Doelle, Mrs. Lucy Findley, Mrs. Laura Fraser, Miss Alta Griffin, Miss Mary Gregg, Leonard Hendee, Miss Lonah Burrows, George Friggens, Mrs. Maude Barker, Mrs. Hilda Fulcher, Mrs. Orpha Fishel, Mrs. Clara Swartz, Mrs. Dora Baker and Mrs. Josephine Graham.



**GIRL SCOUTS**

TROOP 48

The meetings of Troop 48 will be every Monday night after school. We will meet in the Audio-Visual room.

Penny Eisenbeiser gave a report on planning board. Suzy Clark and Sharon Bollinger will be the representatives to planning board. The next meeting will be Sept. 27 at 9:45.

The girls in Troop 48 who took canoe lessons will be able to go on the canoe trip down the Rifle River with Girl Scouts Oct. 6 and 7.

We will be going to Junior-Senior Week-end Sept. 28, 29, and 30. Sandy Severn and Janet Hafner are to plan a menu for it. Sandy Severn and Sharon Bollinger are to attend a meeting at 7:00 Sunday, Sept. 23 at Mrs. Sam Sekaros' house 1215 Prescott in Ann Arbor, to help plan the Junior-Senior Week-end.

The troop is to have a bake sale to earn money to help two Girl Guides from India visit Michigan. The date is not yet set.

The girls of Troop 48 had met Sept. 11 at Nancy Mshar's house to elect new officers. They are as follows: president, Sharon Bollinger; vice president, Carol Wilkerson; treasurer, Penny Eisenbeiser; secretary, Suzy Clark; entertainment chairman, Sandy Severn; refreshment chairman, Janet Hafner. The dues will be 50 cents a month and should be paid at the first meeting of the month.

Suzy Clark, scribe.

**WE HAVE**

THE TOP 100 IN POPULAR RECORDS

and a generous supply of your Country Westerns.

We have needles, record boxes, and other accessories for your convenience.

**RECORD MART**

114 N. MAIN ST. SYLVAN HOTEL

**PLAN TO BUILD?**

see us...

Our suggestions will help you bring beauty and individuality to your new home through time-tested methods. Let us help you with your building plans NOW!

**CHELSEA LUMBER CO.**

DIAL GR 5-3391

**Let Us Service Your Car While You Do Your Washing & Dry Cleaning at**

**CHELSEA MOTORS LAUNDROMAT**

**WASH, 20c — DRY, 10c**

**DRY CLEANING \$1.50**

Just North of I-94 Expressway  
On Manchester Road (M-92)

**PHONE 475-5011**

## BUDGET WISE STORE

110 S. Main St.  
Chelsea, Mich.  
Phone 479-1611

(CHELSEA'S FIRST DISCOUNT STORE)

**Featuring Nationally-Known Merchandise AT LOW, LOW PRICES!**

We Specialize in Top Quality... No Seconds or Off Brands!

**CHECK THIS LIST FOR REAL SAVINGS**

These are just a few examples of the every-day bargains featured at the Budget Wise Store

## HAIR SPRAYS

REG. PRICE	OUR PRICE
\$2.25 ADORN	\$1.80
\$1.50 LUSTRE CREME	79c
\$2.00 BRECK	\$1.60
\$2.00 AQUA-NET	99c
\$2.35 ALBERTO VO-5	\$1.88

## DEODORANTS

REG. PRICE	OUR PRICE
\$ .98 BAN	78c
\$1.00 SECRET	\$ .80
\$ .69 ARRID CREAM	55c
\$1.00 MENNEN SPRAY	80c

## ANTACIDS

REG. PRICE	OUR PRICE
\$ .59 ALKA-SELTZER	48c
\$ .98 BROMO-SELTZER	79c
\$ .99 PHILLIPS MILK OF MAGNESIA	59c
\$1.57 MAALOX LIQUID	\$1.26
\$1.49 GELUSIL LIQUID	\$1.19
\$ .98 PEPTO-BISMOL	78c

## DIETETIC NEEDS

REG. PRICE	OUR PRICE
\$1.85 METRECAL LIQUID 6 Pack	\$1.67
\$ .99 METRECAL Powder 8 oz.	89c
\$1.19 MEREAL Wafers	99c
\$2.23 SUCARYL Liquid 16 oz.	\$1.79
\$3.49 SUCARYL Tablets Sodium 1000's	\$2.79

## COLD REMEDIES

REG. PRICE	OUR PRICE
\$1.69 DRISTAN	\$1.35
\$2.25 ALLEREST	\$1.80
\$1.08 CORICIDIN	86c
\$1.49 CONTAC	\$1.19

## MOUTH WASHES

REG. PRICE	OUR PRICE
\$ .98 MICRIN	79c
\$ .89 LISTERINE	71c
\$ .97 CEPACOL	78c
\$ .89 LAVORIS	71c

## DENTAL NEEDS

REG. PRICE	OUR PRICE
\$ .83 CREST	66c
\$ .83 PEPSODENT	66c
\$ .83 COLGATE	66c
\$ .83 IPANA	66c
\$ .63 POLIDENT	59c
\$1.13 FASTEETH	90c
\$1.39 DENTUR-EZE	\$1.11

## HOUSE-HOLD NEEDS

	OUR PRICE
UTILITY STOOLS .....	\$2.19
RAID SPRAY .....	\$1.19
CHARCOAL LIGHTER .....	39c
DISTILLED WATER, gal. ....	33c
ZIPPER GYM BAGS .....	\$1.89
RUBBING ALCOHOL, pint .....	23c

## TOYS

Reg.	SPECIAL
\$1.98	<b>88c</b>

## PAIN REMEDIES

REG. PRICE	OUR PRICE
\$1.39 EXCEDRIN	\$1.12
\$ .19 ASPIRIN, 100's	15c
\$1.29 BUFFERIN	\$1.03
\$1.25 ANACIN	99c

## VITAMINS

REG. PRICE	OUR PRICE
\$4.98 GERITOL	\$3.98
\$3.54 POLYVISOL, 50cc	\$2.84
\$3.38 UNICAP - M	\$2.70
\$7.89 THERAGRAN - M 100's	\$6.31
\$3.00 CHOCKS	\$2.40
\$6.47 ONE-A-DAY, 250's	\$5.17

**SPECIAL!**

**HALLMARK NOTES**

**19c**

Varied designs.  
59c to \$1.00 value.

## GIFTS GLASS-WARE BY LIBBY

TABLE LAMPS	\$1.09
HAIR DRYERS	\$8.99
ELECTRIC BLANKETS	\$11.95

## Our Reputation for QUALITY

We are specialists in fully guaranteed monuments sculptured from Select Barre Granite.



**BECKER MEMORIALS**

6033 Jackson Road  
ANN ARBOR, MICHIGAN

**"BETTER BUYS at BUDGET WISE"**

COMPLETE LINE OF "HALLMARK" FANNY FARMER CANDY







Prices Effective

Monday, Sept. 17

Thru

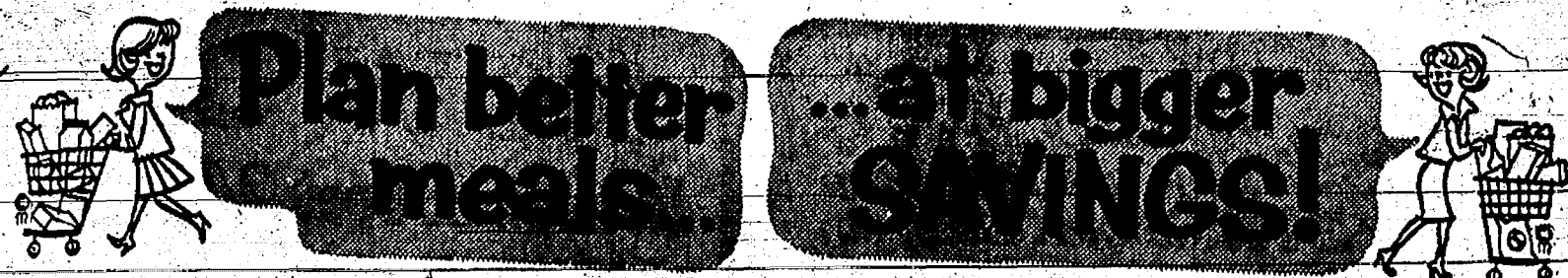
Wednesday, Sept. 26

# STOP & SHOP

*"Better Foods For Better Living"*

14901 OLD US-12 - CORNER M-92 - CHELSEA, MICHIGAN

We Reserve  
The Right  
To Limit  
Quantities.



— STOP &amp; SHOP FEATURES —

"TRIPLE R FARMS" - U.S. CHOICE - CORN FED BEEF

**SUGAR** PIONEER FINE GRANULATED 5 lb. bag **49c**

**COFFEE** Chase & Sanborn, Hills Bros. Beech Nut or Maxwell House 1-Lb. Can - All Grinds **58c**

**BREAD** Stop & Shop's Enriched, Sliced White 2 20-Oz. Poly-Wrapped Loaves **37c**

**TOMATO SOUP** No. 1 Can Campbell's **10c**

**JELL-O** GELATIN DESSERT Assorted Fruit Flavors 3 3-Oz. Pkgs. **25c**

**TUNA** STAR KIST - CHUNK STYLE

3 8 1/2 oz. cans **89c**

**SCOTT TISSUE** White, Pink, Yellow, Aqua

6 Rolls **69c**

**WAX PAPER** CUT-RITE

2 125-ft. Rolls **49c**

**SCOT TOWELS** New super absorbent. 200-COUNT ROLLS 3 Rolls **\$1.00**

**SCOTTIES** New Magic Oval Box. White, Pink, Yellow, Aqua.

2 400 Count Boxes **49c**

**STOP & SHOP**  
HEALTH and BEAUTY AIDS

GILLETTE SUPER

**BLUE BLADES** 15 Blades Regular \$1.00 Size **68c**



FRESH DRESSED

**FRYERS**

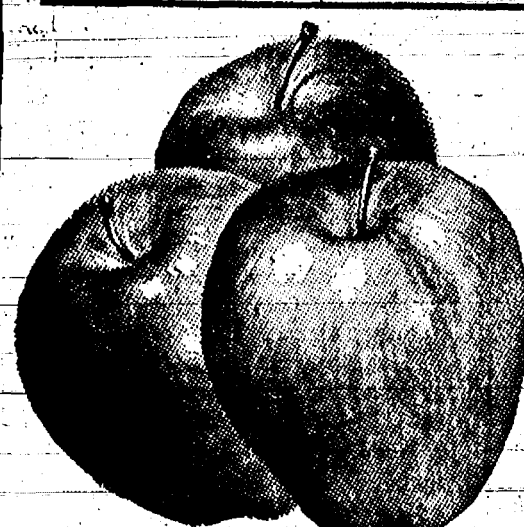
Grade A U. S. Inspected Whole Chicken **29c lb.**

CUT-UP FRYERS - lb. 33c

**PORK CUTLETS** Lean, tender boneless cubes Breaded **69c**

"TRIPLE R FARMS" FRESH DRESSED  
**CHICKEN LEGS . . . 49c**  
**CHICKEN BREASTS 59c**

"TRIPLE R FARMS" HICKORY SMOKED  
**SLAB BACON 49c**  
Any Size End Piece per lb.



U.S. No. 1 All-Purpose McIntosh

**APPLES**

4-lb. bag **39c**

CALIFORNIA RED FLAME

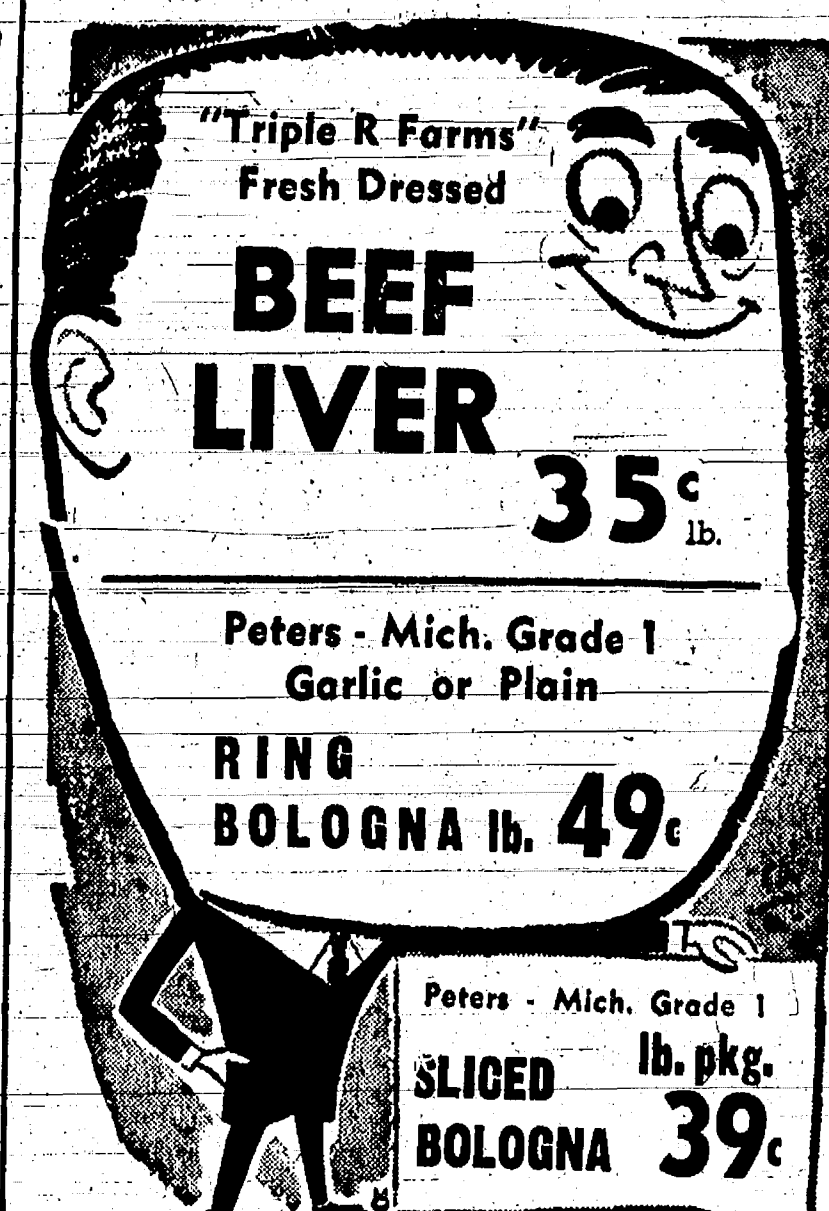
**TOKAY GRAPES**

**10c lb.**

MICHIGAN GROWN TENDER CRISP

**PASCAL CELERY**

30. size LARGE STALK **10c**



**FROZEN FOODS**

CYPRESS GARDENS FRESH FROZEN

**ORANGE JUICE** 6 6-Oz. Cans **77c**

**CHEF'S CHOICE QUICK FROZEN FRENCH FRIES** 10c

Birds' Eye Fresh Frozen 8-Oz. Pkg. **19c**

**FISH BITES**

**DAIRY DEPT.**

GAYLORD FRESH SWEET CREAM

**BUTTER . . . lb. 58c**

KRAFT'S

**VELVEETA CHEESE**

2 lbs. **79c**

Plain or Pimento Loaf

**STORE HOURS**

MONDAY THROUGH WEDNESDAY 9 A.M. TO 6 P.M.  
THURSDAY-FRIDAY 9 A.M. TO 9 P.M.  
SATURDAY 8 A.M. TO 9 P.M.

**STORE HOURS**



**Sports Quiz Answers**

1. Yugoslavia and Mexico.
2. Mexico, 3-0.
3. Welter champion Emile Grif.
4. The Detroit Tigers.
5. At Cleveland—before 74,000 fans.

The largest highway contract bid opening ever held by any state highway department was held at Lansing on Dec. 8, 1960, with low bids totaling \$42.3 million.

**Jon Wortley Earns Scholastic Honors At Cleary College**

Mr. and Mrs. Thomas Wortley of Grass Lake were notified this week by Cleary College, Ypsilanti, that their son, Jon, has been placed on the President's List.

Jon, who enrolled July 2 in accounting, received an "A" average (4.0) in each of the five subjects in his curriculum.

**Larrowe Calf-Raise****A REAL MONEY MAKER**

Here's what the Larrowe Calf Raising Plan Will Do For You:

- Save from 350 to 2000 pounds of milk in raising a calf over the liquid feeding method.
- Raise calves \$8.00 to \$20.00 cheaper than liquid milk methods.
- Double the weight of a calf in 70 days.
- Promote early cud-chewing and rumen development.
- Each pound of Calf Raise replaces 10 lbs. of milk and is a real money saver.
- One 25 lb. bag of Calf Raise is all it takes to raise a calf, and replaces 250 lbs. of whole milk.

**CHECK THESE SAVINGS**

Price of Milk CWT	\$3.00	\$4.00	\$5.00	\$6.00
Ordinary plan costs 350 lbs. of whole milk per calf	10.50	14.00	17.50	21.00
Calf-Raise Plan costs only 25 lbs. Calf Raise per calf	4.00	4.00	4.00	4.00
Net Savings Per Calf	6.50	10.00	13.50	17.00

Stop in for Your Free Udder Sponge with Each Bag of New Improved

**Larrowe Calf-Raise**

NOW AVAILABLE FROM  
THE FOLLOWING DEALERS

**FARMERS' SUPPLY CO.**

Across from NYC Depot, Chelsea

Phone GR 5-5511

**Blaess Elevator Co.**

Four Mile Lake, Chelsea

**D. E. Hoey & Son**

Dexter, Ph. HA 6-8119

**HALF-PAST TEEN****CHELSEA VILLAGE COUNCIL PROCEEDINGS**

Sept. 4, 1962  
Council Room

**Regular Session**

This meeting was called to order by Pres. Daniels at 8:00 p.m. Invocation by the Rev. J. R. Smucker of the St. Barnabas Episcopal Church. Trustees present: Barr, Burg, Chandler, Clark, Hasel-schwartz, and Paul.

The minutes of the August 21, 1962 meeting were read and approved. A discussion was held with Mr. Walter Harper, Mr. Harry Pund-den and Mr. Paul Pierce regarding the boundaries of Pierce Park. It was suggested that Trustee Paul, and a committee meet with Mr. Pierce at the Park site in an attempt to fix the actual boundaries.

The Public and Institutional Property Plan survey as presented by The A. D. Mayer Agency for blanket coverage of all Village property, building, and contents was explained to the Council by Trustee Chandler, the insurance committee chairman. No official action was taken at this time.

A request was entered by Mr. Walter Harper for consideration of scraping and chloriding of the

alley located between East Middle and Harrison Streets. Kellie Allen, Supt. of Public Works was instructed to contact the Village Engineer for estimates for possible seal coating of this alley, and the alley located between Summit and Orchard Streets.

A report on the progress of the new construction and repair of old sidewalks was given by Trustee Hasel-schwartz. New construction to date includes a section on Taylor Street, and a section on Van Buren Street. Several hundred feet of old sidewalk has been removed and repaired. Special emphasis is being placed on sidewalk repair rather than on new construction. The sidewalk committee is aware of the many sections of the Village sidewalks that are in need of repair, and plan to accomplish as much as the budget will allow. At this time, most of the 1962 sidewalk budget is being considered for repair of old walks.

A discussion was held with Mr. Clarence Hanselman, Washtenaw County Building Inspector regarding a uniform building code, now being adopted by several townships, and villages within the county. Mr. Hanselman was asked to forward several specific items of information.

A discussion was held regarding the peat factory. The Clerk was instructed to obtain bids for the demolition of the buildings. The cost involved will be added to the tax roll of the property owners.

A discussion was held with Mr. Duane Crouch, regarding the Flanders Street Lift Station. Mr. Crouch reported a malfunction of the station, approx. 10 days ago. Since the malfunction, the repairs on the Lift Station have been completed. Three phase current has been installed, two new three phase motors, and a new compressor have also been installed. It is the hope of the Council that the final work will correct the problems that have been occurring since the station was first built. A change in the daily inspection by the Sewage treatment operators, was suggested. Trustee Clark was instructed to contact Melvin Leach, and arrange for the station to be inspected in the morning and then again in the late afternoon.

Mr. Crouch advised the council that much storm water is still entering the system at one specific location. Trustee Hasel-schwartz was instructed to bring this problem to the attention of the Public Works Supt.

Motion by Chandler, supported by Barr, to accept the proposal of the A. D. Mayer Agency for the Public and Institutional Property Insurance Plan effective Sept. 15, 1962. Roll call: Yeas all. Motion carried.

**RESOLUTION**  
Motion by Clark, supported by Chandler, that the Village Clerk is hereby authorized to make application on behalf of the Village of Chelsea for a permit to place a banner across State Trunkline M-62 between East Middle Street, and Park Street on Sept. 18, 1962, and to remove on or before Oct. 14, 1962, and that the Village of Chelsea will indemnify and save harmless the State of Michigan and the State Highway Commissioner from all claims of every kind arising out of said placing. Said banner to list the "JC Chicken Bar-B-Cue." Roll call: Yeas all. Motion carried.

Motion by Barr, supported by Burg, to authorize and direct to Clerk to issue checks in payment of bills as submitted. Roll call: Yeas all. Motion carried. General Fund: \$4,149.84. Sewage Treatment Bond and Interest Account: \$10,670.68.

Motion by Clark, supported by Paul, to adjourn the meeting. Roll call: Yeas all. Motion carried.

Meeting adjourned.  
Approved: Sept. 13, 1962.  
Robert L. Daniels, President.  
George Winans, Clerk.

High moisture ear corn stored in cement silos has as much feed value per pound of dry matter as mature, dry corn, say dairy scientists at Michigan State University.

**Scouts Attend Junior Patrol Training Meet**

A junior leader training course for patrol leaders and assistant patrol leaders of Boy Scouts in District IV of the Portage Trails Council was held at Bruin Lake Camp the past week-end. There were 61 boys present from six communities in the district.

Robert Foy, Scoutmaster of Chelsea's Troop 25 and assistant district commissioner, was the instructor for the course. Assisting him were Harold Baker of Chelsea Troop 76; the Rev. Philip Ruston of Chelsea Troop 52; Bob Armentrout of Troop 28, Manchester; Dave Crowell of Whitmore Lake Troop 9; Robert Zolowski of Milan Troop 49; Robert Wild and Brad Barr of Whitmore Lake Troop 9; and Ed Barrett of Saline Troop 46.

Boys representing the seven troops numbered 11 from Troop 9; 6 from Troop 25; 8 from Troop 76; 7 from Troop 28; 7 from Troop 29; 4 from Troop 46 and 9 from Troop 49.

A campfire program was held Saturday night with all patrols taking part in the program. Ronald West of Saline was nominated and elected senior patrol leader by the 51 Scouts present and acted in that capacity throughout the training course.

**West Children's Fair Float Nearly Overlooked**

When the Community Fair parade passed through the downtown area Saturday, Sept. 8, one entry immediately behind the Chelsea Color Guard—Nursery's first-place float—a "train" with George Winans as "engineer"—and the float at the rear was mistakenly taken by many viewers to be a part of the nursery's entry.

The float at the rear was an entry by the children of Mrs. Wilson's Ward—David, Duane, Duane, Denise and Della—and was named "Lady Della and Her Attendants."

Della rode in a cart flanked by two of her brothers marching along in top hats and tails. Their dog, Nicholena, who was supposed to have a part in the show, became frightened and excited because of the horses in the parade and for safety reasons was shut up in a locked car until the parade was over.

The Wests had also appeared in and won one of the group prizes. With a population of less than 750,000, Michigan enlisted more than 90,000 men in the Union Forces during the Civil War.

**Serviceman's Corner**

DAVID F. FRASER

**David F. Fraser In Recruit Training At Great Lakes, Ill.**

Great Lakes, Ill.—David F. Fraser, son of Mr. and Mrs. Lloyd S. Fraser of 14415 Island Lake Rd., Chelsea, Mich., who began recruit training Aug. 18, at the Naval Training Center, Great Lakes, Ill., will continue there for another four weeks.

The basic training includes instruction in military etiquette, drill, physical fitness, swimming and survival; first aid, shipboard safety precautions and security duty.

Throughout the training, recruits receive specialized counseling which assists them in selecting a rating in which to work from more than 65 available job specialties.

Fraser is a June, 1962, graduate of Chelsea High school, enlisted for four years.

His present address is: David F. Fraser, S.R. 599-74-80

Company 338, R.T.C.

Camp Porter, Great Lakes, Ill.

**Superior 4-H Saddle Club Sponsoring Junior Horse Show**

Superior 4-H Saddle Club will hold their first annual 4-H and Junior Horse Show on Sunday, Sept. 30, at noon in the Fleming Creek Riding Club arena one-half mile north of M-14 on Dixboro Rd.

A novice class is open to both English and Western style riders who do not place first or second in any of the show's other scheduled events. This novice class entry is free, and eligible boys and girls are encouraged to participate.

**Six Fatalities Listed by Sheriff In August Report**

The following is an itemized list of activities of the Washtenaw County Sheriff's Department for the month of August when 1,066 complaints were answered. The list includes 104 arrests; 64 warrants closed; 555 civil papers served; and 148 accidents investigated (98 property damage, 52 involving personal injury with 70 persons injured, and three fatal with six persons killed.)

Sheriff's Department cars were driven a total of 57,780 miles during August.

The report, continues with report of the department's control division which handled 102 dogs.

The Driver's License division issued a total of 1,746 licenses including 59 duplicates, 212 renewals, 1,177 operator renewals, one minor renewal 208 originals. Fees collected amounted to \$4,774.75.

Concluding the report was notation that a total of meals were served to inmates the County Jail during the month.

The products of one acre are six in the United States are reported, according to a recent date.

**STIVERS NOW OPEN****Restaurant Open 24 Hours Daily**

BREAKFAST - LUNCH - DINNER

BAR OPEN 8:30 a.m. to 2 a.m.  
Sunday, Noon to Midnight

**FISH FRY FRIDAY NIGHTS**

I-94 at Fletcher and Jackson Rd. Interchange

**IT'S FLEX-O-GLASS TIME**

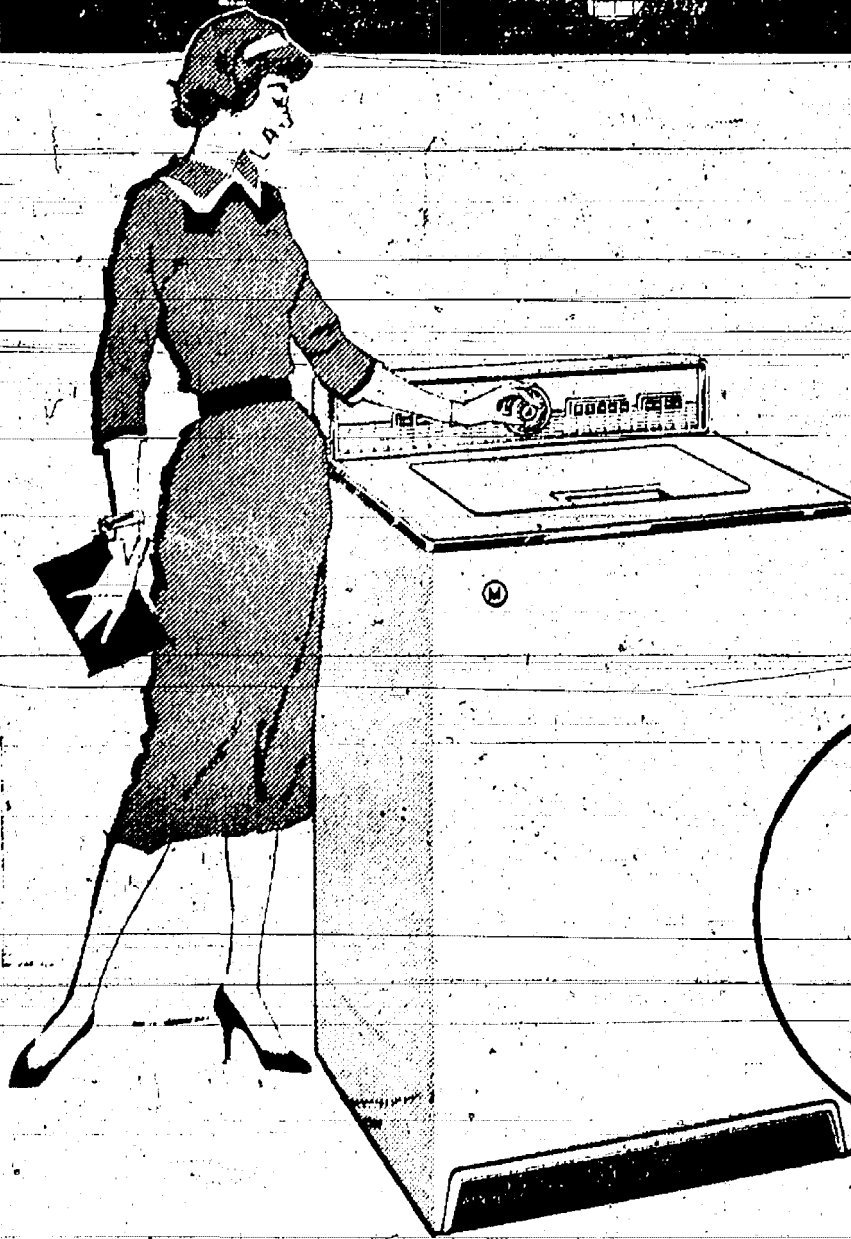
TIME to Make Your Home Winter-Tight, Draft-Free

TIME to Save Up To 40% on Your Fuel Bill

FLEX-O-GLASS is the only window material that carries a 2 YEAR GUARANTEE. Look for the name FLEX-O-GLASS on the edge.

Get Genuine FLEX-O-GLASS At Your Local Hdw. or Lmbr. Dlr.

NEW! A 2-Speed Washer at an Economy Price

**MAYTAG Super Highlander**

The most sensational washer—the most outstanding value—we have ever offered! Absolutely top quality (the only kind Maytag makes!) with more automatic and deluxe features than you'll find in some of the very highest priced washers.

**MAYTAG COSTS LESS TO OWN**

- 2-speed, 2-cycle operation—washes any fabric safely
- Choice of 3 water temperatures—HOT, WARM, and COLD
- Fully automatic—set it and forget it!
- Fully flexible—stop it, start it, change cycle any time!
- RUST-RESISTANT zinc-coated steel cabinet—only Maytag has it!
- 926 lint-removers solve the lint problem!
- Full-time safety lid—prevents accidents!
- Pushbutton water level control—adjusts the water level to the load
- Metered Fill—adjusts to any water pressure
- Lifetime white porcelain wash tub—can't rust, can't stain!
- Gyrofoam wash action—washes clothes Maytag clean!

Before you buy any washer...see the Maytag Super-Highlander!

**FRIGID PRODUCTS**

LLOYD R. HEYDLAUFF

113 North Main St.

Phone GR 9-6651

**NO WEATHER WORRIES...DRYER DAYS**

**Gas-dry your wash**

WITH A  
**Maytag Electronic Control Gas Dryer**

- ★ Never overdries
- ★ Never Underdries
- ★ Saves ironing
- ★ Shuts off when clothes are dried just right.

**MAYTAG**  
the dependable automatics

**GAS DRYERS from \$138<sup>00</sup>**  
Model DG 100

**FREE INSTALLATION**  
LIMITED TIME ONLY

by **MICHIGAN CONSOLIDATED GAS COMPANY**

**FRIGID PRODUCTS**

113 North Main St.

Lloyd R. Heydlauff

Phone GR 9-6651